

Datasheet for ABIN7159558  
**anti-MACC1 antibody (AA 371-514)**[Go to Product page](#)

## 3 Images

## Overview

Quantity:	100 µg
Target:	MACC1
Binding Specificity:	AA 371-514
Reactivity:	Human
Host:	Rabbit
Clonality:	Polyclonal
Conjugate:	This MACC1 antibody is un-conjugated
Application:	Western Blotting (WB), ELISA, Immunohistochemistry (IHC), Immunofluorescence (IF)

## Product Details

Immunogen:	Recombinant Human Metastasis-associated in colon cancer protein 1 protein (371-514AA)
Isotype:	IgG
Cross-Reactivity:	Human
Purification:	>95%, Protein G purified

## Target Details

Target:	MACC1
Alternative Name:	MACC1 ( <a href="#">MACC1 Products</a> )
Background:	Background: Acts as a transcription activator for MET and as a key regulator of HGF-MET signaling. Promotes cell motility, proliferation and hepatocyte growth factor (HGF)-dependent

## Target Details

scattering in vitro and tumor growth and metastasis in vivo.

Aliases: 7A5 antibody, MACC1 antibody, MACC1\_HUMAN antibody, Metastasis associated in colon cancer 1 antibody, Metastasis-associated in colon cancer protein 1 antibody, OTTHUMP00000201891 antibody, Putative binding protein 7a5 antibody, SH3 domain-containing protein 7a5 antibody, SH3BP4L antibody

UniProt: [Q6ZN28](#)

## Application Details

Application Notes: Recommended dilution: WB:1:500-1:5000, IHC:1:20-1:200, IF:1:50-1:200,

Restrictions: For Research Use only

## Handling

Format: Liquid

Buffer: Preservative: 0.03 % Proclin 300  
Constituents: 50 % Glycerol, 0.01M PBS, pH 7.4

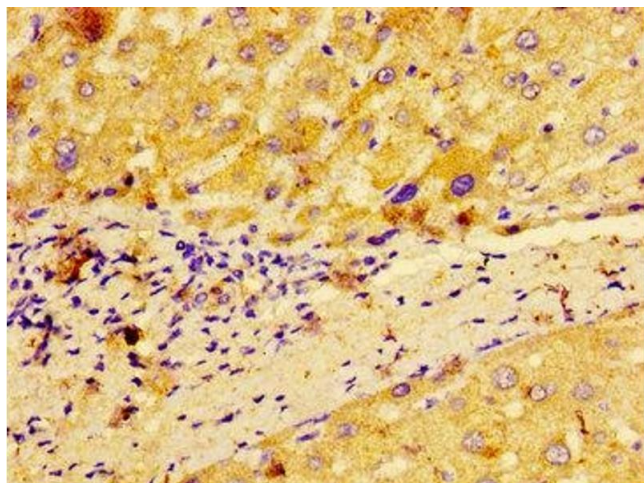
Preservative: ProClin

Precaution of Use: This product contains ProClin: a POISONOUS AND HAZARDOUS SUBSTANCE which should be handled by trained staff only.

Storage: -20 °C,-80 °C

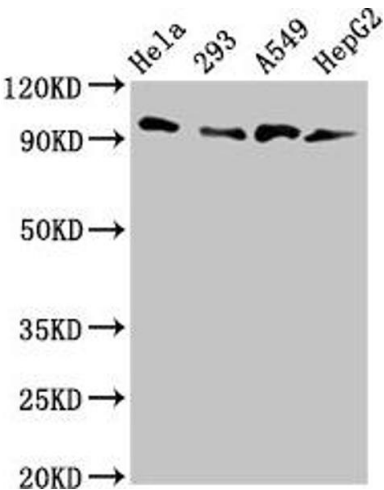
Storage Comment: Upon receipt, store at -20°C or -80°C. Avoid repeated freeze.

## Images



### Immunohistochemistry

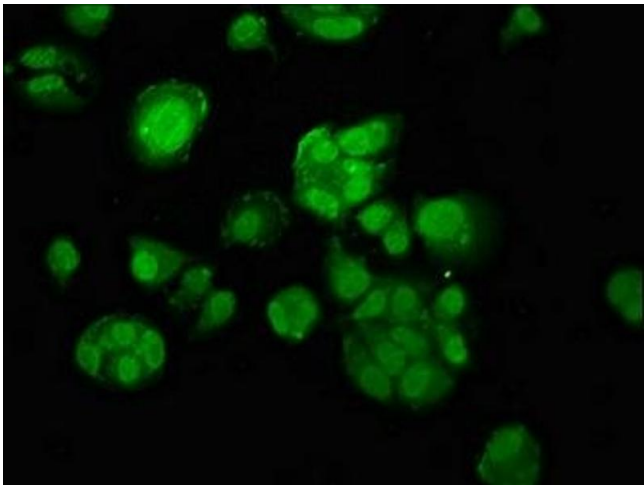
**Image 1.** IHC image of ABIN7159558 diluted at 1:100 and staining in paraffin-embedded human liver tissue performed on a Leica Bond™ system. After dewaxing and hydration, antigen retrieval was mediated by high pressure in a citrate buffer (pH 6.0). Section was blocked with 10% normal goat serum 30min at RT. Then primary antibody (1% BSA) was incubated at 4°C overnight. The primary is detected by a biotinylated secondary antibody and visualized using an



HRP conjugated SP system.

Western Blotting

**Image 2.** Western Blot Positive WB detected in: Hela whole cell lysate, 293 whole cell lysate, A549 whole cell lysate, HepG2 whole cell lysate All lanes: MACC1 antibody at 3  $\mu$ g/mL Secondary Goat polyclonal to rabbit IgG at 1/50000 dilution Predicted band size: 97 kDa Observed band size: 97 kDa



Immunofluorescence

**Image 3.** Immunofluorescence staining of MCF-7 cells with ABIN7159558 at 1:100, counter-stained with DAPI. The cells were fixed in 4% formaldehyde, permeabilized using 0.2% Triton X-100 and blocked in 10% normal Goat Serum. The cells were then incubated with the antibody overnight at 4°C. The secondary antibody was Alexa Fluor 488-conjugated AffiniPure Goat Anti-Rabbit IgG(H+L).