

Datasheet for ABIN7159562
anti-KISS1 antibody (AA 20-138)



[Go to Product page](#)

1 Image

Overview

Quantity:	100 µg
Target:	KISS1
Binding Specificity:	AA 20-138
Reactivity:	Human
Host:	Rabbit
Clonality:	Polyclonal
Conjugate:	This KISS1 antibody is un-conjugated
Application:	Immunohistochemistry (IHC), ELISA

Product Details

Immunogen:	Recombinant Human Metastasis-suppressor KiSS-1 protein (20-138AA)
Isotype:	IgG
Cross-Reactivity:	Human
Purification:	>95%, Protein G purified

Target Details

Target:	KISS1
Alternative Name:	KISS1 (KISS1 Products)
Background:	Background: Metastasis suppressor protein in malignant melanomas and in some breast cancers. May regulate events downstream of cell-matrix adhesion, perhaps involving

Target Details

cytoskeletal reorganization. Generates a C-terminally amidated peptide, metastin which functions as the endogenous ligand of the G-protein coupled receptor GPR54. Activation of the receptor inhibits cell proliferation and cell migration, key characteristics of tumor metastasis. Kp-10 is a decapeptide derived from the primary translation product, isolated in conditioned medium of first trimester trophoblast. Kp-10, but not other kisspeptins, increased intracellular Ca(2+) levels in isolated first trimester trophoblasts. Kp-10 is a paracrine/endocrine regulator in fine-tuning trophoblast invasion generated by the trophoblast itself. The receptor is also essential for normal gonadotropin-released hormone physiology and for puberty. The hypothalamic KiSS1/GPR54 system is a pivotal factor in central regulation of the gonadotropic axis at puberty and in adulthood.

Aliases: KISS 1 antibody, KiSS 1 metastasis suppressor antibody, Kiss1 antibody, KISS1_HUMAN antibody, Kisspeptin 1 antibody, Kisspeptin 10 antibody, Kisspeptin 13 antibody, Kisspeptin 14 antibody, Kisspeptin antibody, Kisspeptin-1 antibody, Kisspeptin-10 antibody, Kisspeptin-54 antibody, Kisspeptin1 antibody, Malignant melanoma metastasis suppressor antibody, Metastasis suppressor KiSS 1 antibody, Metastasis suppressor KiSS1 antibody, Metastin antibody, MGC39258 antibody

UniProt: [Q15726](#)

Pathways: [Positive Regulation of Peptide Hormone Secretion](#)

Application Details

Application Notes: Recommended dilution: IHC:1:20-1:200,

Restrictions: For Research Use only

Handling

Format: Liquid

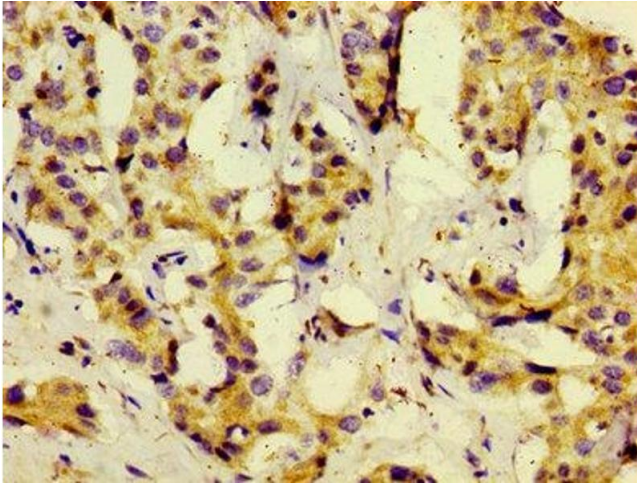
Buffer: Preservative: 0.03 % Proclin 300
Constituents: 50 % Glycerol, 0.01M PBS, pH 7.4

Preservative: ProClin

Precaution of Use: This product contains ProClin: a POISONOUS AND HAZARDOUS SUBSTANCE which should be handled by trained staff only.

Storage: -20 °C,-80 °C

Storage Comment: Upon receipt, store at -20°C or -80°C. Avoid repeated freeze.



Immunohistochemistry

Image 1. Immunohistochemistry of paraffin-embedded human liver cancer using ABIN7159562 at dilution of 1:100