

Datasheet for ABIN7159569
anti-METRNL antibody (AA 46-311)[Go to Product page](#)

2 Images

Overview

Quantity:	100 µg
Target:	METRNL
Binding Specificity:	AA 46-311
Reactivity:	Human
Host:	Rabbit
Clonality:	Polyclonal
Conjugate:	This METRNL antibody is un-conjugated
Application:	ELISA, Western Blotting (WB), Immunohistochemistry (IHC)

Product Details

Immunogen:	Recombinant Human Meteorin-like protein (46-311AA)
Isotype:	IgG
Cross-Reactivity:	Human, Mouse, Rat
Purification:	>95%, Protein G purified

Target Details

Target:	METRNL
Alternative Name:	METRNL (METRNL Products)
Background:	Background: Hormone induced following exercise or cold exposure that promotes energy expenditure. Induced either in the skeletal muscle after exercise or in adipose tissue following

Target Details

cold exposure and is present in the circulation. Able to stimulate energy expenditure associated with the browning of the white fat depots and improves glucose tolerance. Does not promote an increase in a thermogenic gene program via direct action on adipocytes, but acts by stimulating several immune cell subtypes to enter the adipose tissue and activate their prothermogenic actions. Stimulates an eosinophil-dependent increase in IL4 expression and promotes alternative activation of adipose tissue macrophages, which are required for the increased expression of the thermogenic and anti-inflammatory gene programs in fat. Required for some cold-induced thermogenic responses, suggesting a role in metabolic adaptations to cold temperatures.

Aliases: Meteorin like glial cell differentiation regulator antibody, Meteorin, glial cell differentiation regulator like antibody, Meteorin-like protein antibody, METRL_HUMAN antibody, Metrnl antibody

UniProt: [Q641Q3](#)

Application Details

Application Notes: Recommended dilution: WB:1:500-1:5000, IHC:1:20-1:200,

Restrictions: For Research Use only

Handling

Format: Liquid

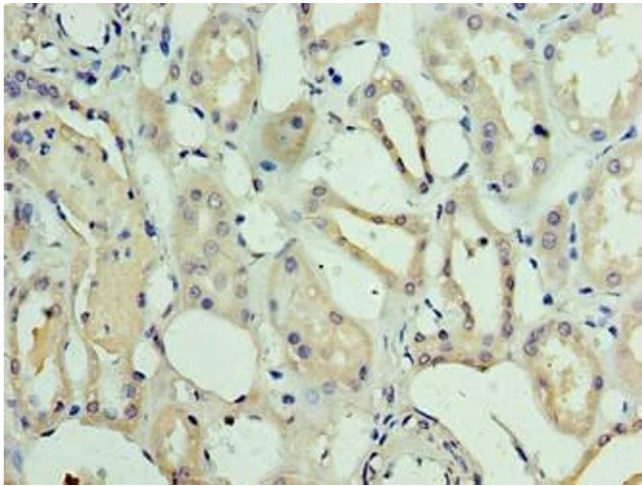
Buffer: Preservative: 0.03 % Proclin 300
Constituents: 50 % Glycerol, 0.01M PBS, PH 7.4

Preservative: ProClin

Precaution of Use: This product contains ProClin: a POISONOUS AND HAZARDOUS SUBSTANCE which should be handled by trained staff only.

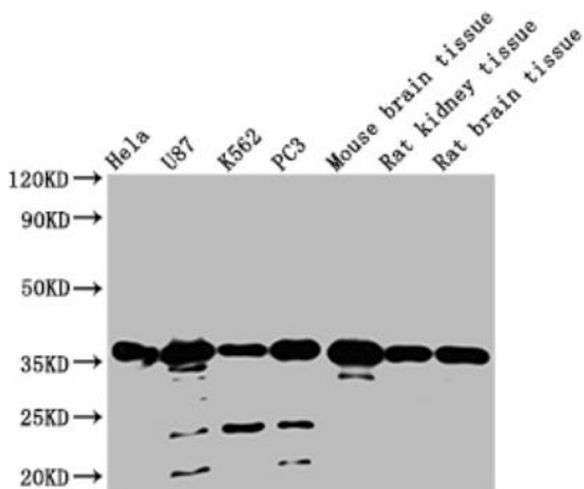
Storage: -20 °C, -80 °C

Storage Comment: Upon receipt, store at -20°C or -80°C. Avoid repeated freeze.



Immunohistochemistry

Image 1. Immunohistochemistry of paraffin-embedded human kidney tissue using ABIN7159569 at dilution of 1:100



Western Blotting

Image 2. Western blot All lanes: METRNL antibody at 2 μ g/mL Lane 1: Mouse small intestine tissue Lane 2: Mouse kidney tissue Lane 3: Rat gonadal tissue Lane 4: Mouse brain tissue Secondary Goat polyclonal to rabbit IgG at 1/10000 dilution Predicted band size: 35, 26 kDa Observed band size: 35 kDa