

Datasheet for ABIN7159581
anti-METAP2 antibody (AA 313-449)[Go to Product page](#)

3 Images

Overview

Quantity:	100 µg
Target:	METAP2
Binding Specificity:	AA 313-449
Reactivity:	Human
Host:	Rabbit
Clonality:	Polyclonal
Conjugate:	This METAP2 antibody is un-conjugated
Application:	Western Blotting (WB), ELISA, Immunohistochemistry (IHC), Immunofluorescence (IF)

Product Details

Immunogen:	Recombinant Human Methionine aminopeptidase 2 protein (313-449AA)
Isotype:	IgG
Cross-Reactivity:	Human, Rat
Purification:	>95%, Protein G purified

Target Details

Target:	METAP2
Alternative Name:	METAP2 (METAP2 Products)
Background:	Background: Cotranslationally removes the N-terminal methionine from nascent proteins. The N-terminal methionine is often cleaved when the second residue in the primary sequence is

Target Details

small and uncharged (Met-Ala-, Cys, Gly, Pro, Ser, Thr, or Val). The catalytic activity of human METAP2 toward Met-Val peptides is consistently two orders of magnitude higher than that of METAP1, suggesting that it is responsible for processing proteins containing N-terminal Met-Val and Met-Thr sequences in vivo.

Aliases: A930035J23Rik antibody, AI047573 antibody, AL024412 antibody, Amp2 antibody, AU014659, antibody, EIF 2 associated p67 homolog antibody, EIF-2-associated p67 antibody, Initiation factor 2 associated 67 kDa glycoprotein antibody, Initiation factor 2-associated 67 kDa glycoprotein antibody, MAP 2 antibody, MAP2 antibody, MAP2_HUMAN antibody, MetAP 2 antibody, Metap2 antibody, Methionine aminopeptidase 2 antibody, Methionyl aminopeptidase 2 antibody, MGC102452 antibody, MGC127390 antibody, MGC53792 antibody, MNPEP antibody, p67 antibody, p67eIF2 antibody, Peptidase M antibody, Peptidase M2 antibody

UniProt: [P50579](#)

Pathways: [Regulation of G-Protein Coupled Receptor Protein Signaling](#)

Application Details

Application Notes: Recommended dilution: WB:1:500-1:5000, IHC:1:20-1:200, IF:1:50-1:200,

Restrictions: For Research Use only

Handling

Format: Liquid

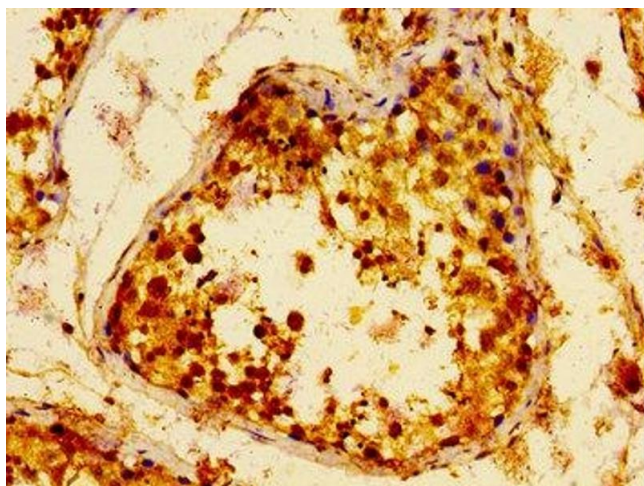
Buffer: Preservative: 0.03 % Proclin 300
Constituents: 50 % Glycerol, 0.01M PBS, pH 7.4

Preservative: ProClin

Precaution of Use: This product contains ProClin: a POISONOUS AND HAZARDOUS SUBSTANCE which should be handled by trained staff only.

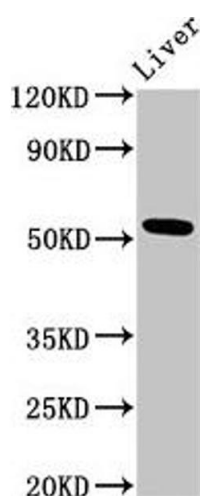
Storage: -20 °C, -80 °C

Storage Comment: Upon receipt, store at -20°C or -80°C. Avoid repeated freeze.



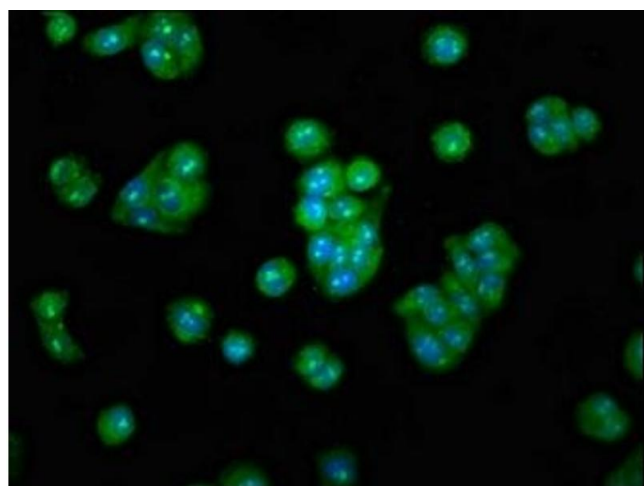
Immunohistochemistry

Image 1. IHC image of ABIN7159581 diluted at 1:100 and staining in paraffin-embedded human testis tissue performed on a Leica Bond™ system. After dewaxing and hydration, antigen retrieval was mediated by high pressure in a citrate buffer (pH 6.0). Section was blocked with 10 % normal goat serum 30 min at RT. Then primary antibody (1 % BSA) was incubated at 4 °C overnight. The primary is detected by a biotinylated secondary antibody and visualized using an HRP conjugated SP system.



Western Blotting

Image 2. Western Blot Positive WB detected in: Rat liver tissue All lanes: METAP2 antibody at 3 µg/mL Secondary Goat polyclonal to rabbit IgG at 1/50000 dilution Predicted band size: 53, 52, 51 kDa Observed band size: 53 kDa



Immunofluorescence

Image 3. Immunofluorescence staining of HepG2 cells with ABIN7159581 at 1:100, counter-stained with DAPI. The cells were fixed in 4 % formaldehyde, permeabilized using 0.2 % Triton X-100 and blocked in 10 % normal Goat Serum. The cells were then incubated with the antibody overnight at 4 °C. The secondary antibody was Alexa Fluor 488-conjugated AffiniPure Goat Anti-Rabbit IgG(H+L).