

Datasheet for ABIN7159597  
**anti-MSRB1 antibody (AA 1-116)**[Go to Product page](#)

## 3 Images

## Overview

|                      |  |
|----------------------|--|
| Quantity:            | 100 µg   |
| Target:              | MSRB1 (SEPX1)  |
| Binding Specificity: | AA 1-116   |
| Reactivity:          | Human  |
| Host:                | Rabbit   |
| Clonality:           | Polyclonal   |
| Conjugate:           | This MSRB1 antibody is un-conjugated                       |
| Application:         | ELISA, Immunohistochemistry (IHC), Immunofluorescence (IF) |

## Product Details

|                   |   |
|-------------------|---|
| Immunogen:        | Recombinant Human Methionine-R-sulfoxide reductase B1 protein (1-116AA) |
| Isotype:          | IgG   |
| Cross-Reactivity: | Human   |
| Purification:     | >95%, Protein G purified  |

## Target Details

|                   |   |
|-------------------|---|
| Target:           | MSRB1 (SEPX1)   |
| Alternative Name: | MSRB1 ( <a href="#">SEPX1 Products</a> )  |
| Background:       | Background: Methionine-sulfoxide reductase that specifically reduces methionine (R)-sulfoxide back to methionine. While in many cases, methionine oxidation is the result of random |

## Target Details

oxidation following oxidative stress, methionine oxidation is also a post-translational modification that takes place on specific residue. Acts as a regulator of actin assembly by reducing methionine (R)-sulfoxide mediated by MICALs (MICAL1, MICAL2 or MICAL3) on actin, thereby promoting filament repolymerization. Plays a role in innate immunity by reducing oxidized actin, leading to actin repolymerization in macrophages (By similarity).

Aliases: Annexin A2 like antibody, EC 1 8 4 antibody, HSPC 270 antibody, HSPC270 antibody, Methionine R sulfoxide reductase antibody, Methionine R sulfoxide reductase B1 antibody, Methionine sulfoxide reductase antibody, Methionine-R-sulfoxide reductase B1 antibody, MGC3344 antibody, MSRB 1 antibody, MsrB1 antibody, MSRB1\_HUMAN antibody, OTTHUMP00000159418 antibody, Sel X antibody, Selenoprotein R antibody, Selenoprotein X 1 antibody, Selenoprotein X antibody, Selenoprotein X1 antibody, SELR antibody, SelX antibody, SEPX 1 antibody, sepx1 antibody

UniProt: [Q9NZV6](#)

## Application Details

Application Notes: Recommended dilution: IHC:1:20-1:200, IF:1:50-1:200,

Restrictions: For Research Use only

## Handling

Format: Liquid

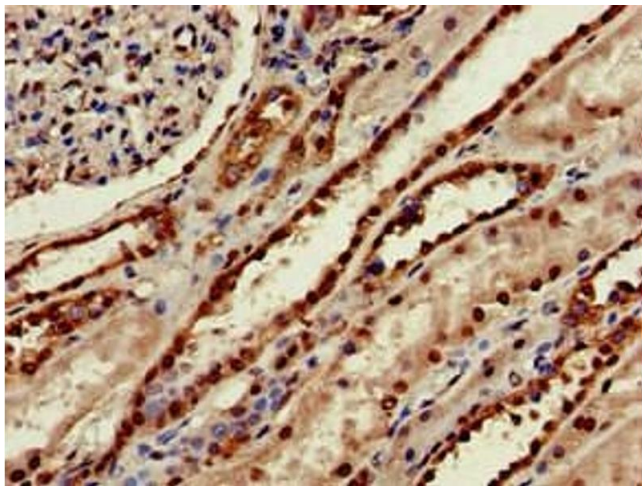
Buffer: Preservative: 0.03 % Proclin 300  
Constituents: 50 % Glycerol, 0.01M PBS, pH 7.4

Preservative: ProClin

Precaution of Use: This product contains ProClin: a POISONOUS AND HAZARDOUS SUBSTANCE which should be handled by trained staff only.

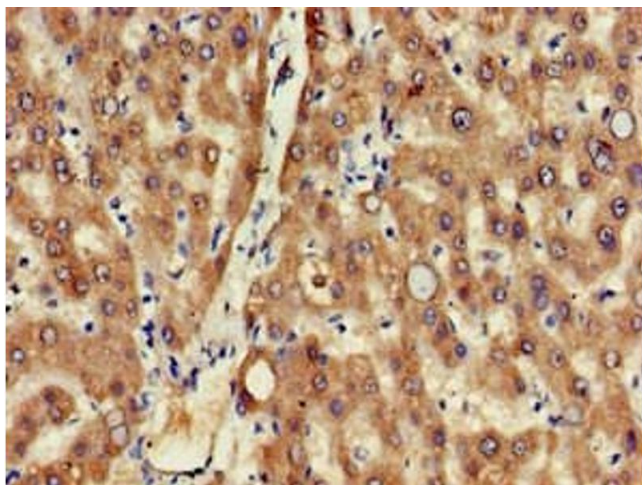
Storage: -20 °C,-80 °C

Storage Comment: Upon receipt, store at -20°C or -80°C. Avoid repeated freeze.



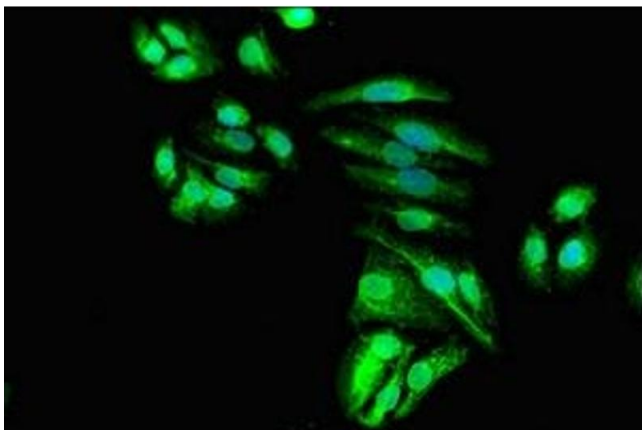
#### Immunohistochemistry

**Image 1.** Immunohistochemistry of paraffin-embedded human kidney tissue using ABIN7159597 at dilution of 1:100



#### Immunohistochemistry

**Image 2.** Immunohistochemistry of paraffin-embedded human liver tissue using ABIN7159597 at dilution of 1:100



#### Immunofluorescence

**Image 3.** Immunofluorescent analysis of HepG2 cells using ABIN7159597 at dilution of 1:100 and Alexa Fluor 488-conjugated AffiniPure Goat Anti-Rabbit IgG(H+L)