

Datasheet for ABIN7159651
anti-ALDH6A1 antibody (AA 274-399)[Go to Product page](#)

2 Images

Overview

Quantity:	100 µg
Target:	ALDH6A1
Binding Specificity:	AA 274-399
Reactivity:	Human
Host:	Rabbit
Clonality:	Polyclonal
Conjugate:	This ALDH6A1 antibody is un-conjugated
Application:	Western Blotting (WB), ELISA, Immunohistochemistry (IHC)

Product Details

Immunogen:	Recombinant Human Methylmalonate-semialdehyde dehydrogenase [acylating], mitochondrial protein (274-399AA)
Isotype:	IgG
Cross-Reactivity:	Human, Mouse
Purification:	>95%, Protein G purified

Target Details

Target:	ALDH6A1
Alternative Name:	ALDH6A1 (ALDH6A1 Products)
Background:	Background: Plays a role in valine and pyrimidine metabolism. Binds fatty acyl-CoA.

Target Details

Aliases: 1110038I05Rik antibody, A1314632 antibody, Aldehyde dehydrogenase 6 family member A1 antibody, Aldehyde dehydrogenase family 6 member A1 antibody, Aldehyde dehydrogenase family 6, subfamily A1 antibody, ALDH6A1 antibody, Malonate semialdehyde dehydrogenase antibody, Malonate-semialdehyde dehydrogenase [acylating] antibody, Methylmalonate semialdehyde dehydrogenase [acylating] mitochondrial antibody, Methylmalonate-semialdehyde dehydrogenase [acylating] antibody, MGC37325 antibody, MGC40271 antibody, Mitochondrial acylating methylmalonate semialdehyde dehydrogenase antibody, mitochondrial antibody, MMSA_HUMAN antibody, MMSADHA antibody, MMSDH antibody

UniProt: [Q02252](#)

Pathways: [Brown Fat Cell Differentiation](#)

Application Details

Application Notes: Recommended dilution: WB:1:500-1:5000, IHC:1:20-1:200,

Restrictions: For Research Use only

Handling

Format: Liquid

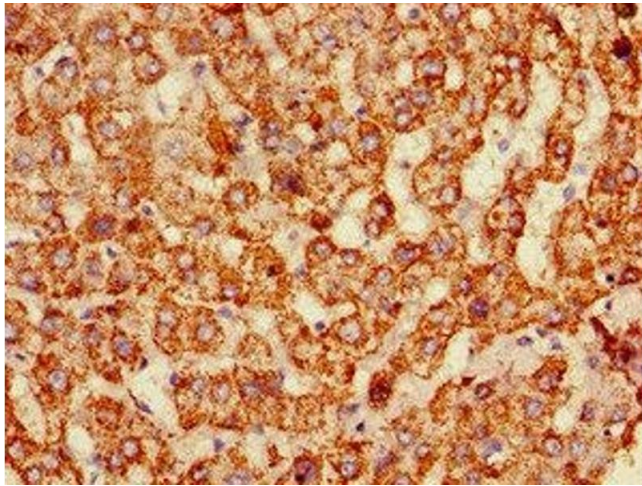
Buffer: Preservative: 0.03 % Proclin 300
Constituents: 50 % Glycerol, 0.01M PBS, PH 7.4

Preservative: ProClin

Precaution of Use: This product contains ProClin: a POISONOUS AND HAZARDOUS SUBSTANCE which should be handled by trained staff only.

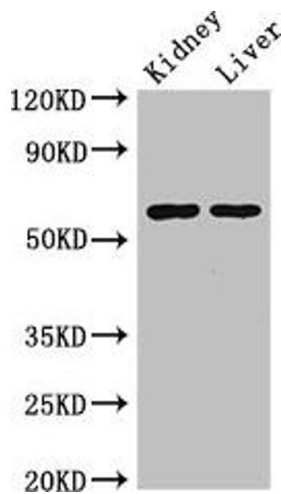
Storage: -20 °C,-80 °C

Storage Comment: Upon receipt, store at -20°C or -80°C. Avoid repeated freeze.



Immunohistochemistry

Image 1. Immunohistochemistry of paraffin-embedded human liver tissue using ABIN7159651 at dilution of 1:100



Western Blotting

Image 2. Western Blot Positive WB detected in: Mouse kidney tissue, Mouse liver tissue All lanes: ALDH6A1 antibody at 2.5 µg/mL Secondary Goat polyclonal to rabbit IgG at 1/50000 dilution Predicted band size: 58, 57 kDa Observed band size: 58 kDa