



Datasheet for ABIN7159666
anti-APIP antibody (AA 1-242)



[Go to Product page](#)

3 Images

Overview

Quantity:	100 µL
Target:	APIP
Binding Specificity:	AA 1-242
Reactivity:	Human
Host:	Rabbit
Clonality:	Polyclonal
Conjugate:	This APIP antibody is un-conjugated
Application:	Western Blotting (WB), ELISA, Immunohistochemistry (IHC)

Product Details

Immunogen:	Recombinant Human Methylthioribulose-1-phosphate dehydratase protein (1-242AA)
Isotype:	IgG
Cross-Reactivity:	Human, Mouse
Purification:	Antigen Affinity Purified

Target Details

Target:	APIP
Alternative Name:	APIP (APIP Products)
Background:	Background: Catalyzes the dehydration of methylthioribulose-1-phosphate (MTRu-1-P) into 2,3-diketo-5-methylthiopentyl-1-phosphate (DK-MTP-1-P). Functions in the methionine salvage

Target Details

pathway, which plays a key role in cancer, apoptosis, microbial proliferation and inflammation. May inhibit the CASP1-related inflammatory response (pyroptosis), the CASP9-dependent apoptotic pathway and the cytochrome c-dependent and APAF1-mediated cell death.

Aliases: Apaf1 Interacting Protein antibody, APAF1-interacting protein antibody, APIP antibody, APIP2 antibody, CG129 antibody, CGI 29 antibody, CGI29 antibody, dJ179L10.2 antibody, MMRP19 antibody, Monocyte/macrophage protein 19 antibody, MTNB_HUMAN antibody, MTRu 1 P dehydratase antibody, MTRu-1-P dehydratase antibody, Probable methylthioribulose 1 phosphate dehydratase antibody, Probable methylthioribulose-1-phosphate dehydratase antibody

UniProt: [Q96GX9](#)

Pathways: [Methionine Biosynthetic Process](#)

Application Details

Application Notes: Recommended dilution: WB:1:1000-1:5000, IHC:1:20-1:200,

Restrictions: For Research Use only

Handling

Format: Liquid

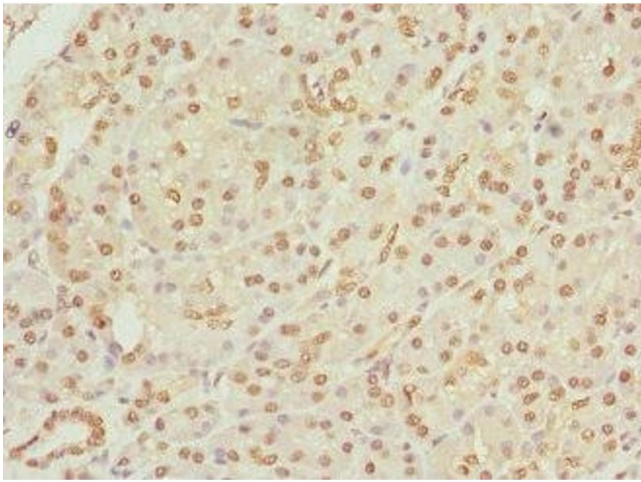
Buffer: PBS with 0.02 % sodium azide, 50 % glycerol, pH 7.3.

Preservative: Sodium azide

Precaution of Use: This product contains Sodium azide: a POISONOUS AND HAZARDOUS SUBSTANCE which should be handled by trained staff only.

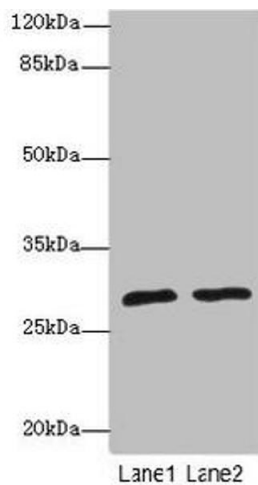
Storage: -20 °C,-80 °C

Storage Comment: Upon receipt, store at -20°C or -80°C. Avoid repeated freeze.



Immunohistochemistry

Image 1. Immunohistochemistry of paraffin-embedded human pancreatic tissue using ABIN7159666 at dilution of 1:100



Western Blotting

Image 2. Western blot All lanes: APIPantibody at 1.85 μ g/mL Lane 1: Mouse heart tissue Lane 2: Mouse kidney tissue Secondary Goat polyclonal to rabbit IgG at 1/10000 dilution Predicted band size: 28, 23 kDa Observed band size: 28 kDa



Immunohistochemistry

Image 3. Immunohistochemistry of paraffin-embedded human skeletal muscle tissue using ABIN7159666 at dilution of 1:100