



Datasheet for ABIN7159667
anti-METTL25 antibody (AA 206-455)



[Go to Product page](#)

1 Image

Overview

Quantity:	100 µg
Target:	METTL25
Binding Specificity:	AA 206-455
Reactivity:	Human
Host:	Rabbit
Clonality:	Polyclonal
Conjugate:	This METTL25 antibody is un-conjugated
Application:	ELISA, Immunohistochemistry (IHC)

Product Details

Immunogen:	Recombinant Human Methyltransferase-like protein 25 protein (206-455AA)
Isotype:	IgG
Cross-Reactivity:	Human
Purification:	>95%, Protein G purified

Target Details

Target:	METTL25
Alternative Name:	METTL25 (METTL25 Products)
Background:	Background: Putative methyltransferase. Aliases: C12orf26 antibody, Chromosome 12 open reading frame 26 antibody, CL026_HUMAN

Target Details

antibody, FLJ22789 antibody, Uncharacterized protein C12orf26 antibody

UniProt: [Q8N6Q8](#)

Application Details

Application Notes: Recommended dilution: IHC:1:20-1:200,

Restrictions: For Research Use only

Handling

Format: Liquid

Buffer: Preservative: 0.03 % Proclin 300
Constituents: 50 % Glycerol, 0.01M PBS, PH 7.4

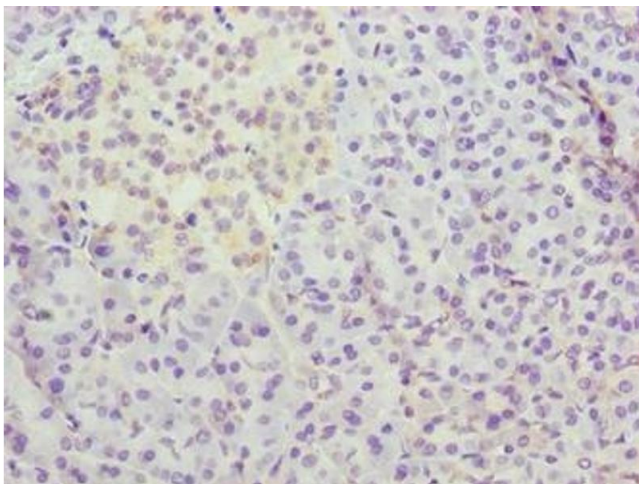
Preservative: ProClin

Precaution of Use: This product contains ProClin: a POISONOUS AND HAZARDOUS SUBSTANCE which should be handled by trained staff only.

Storage: -20 °C,-80 °C

Storage Comment: Upon receipt, store at -20°C or -80°C. Avoid repeated freeze.

Images



Immunohistochemistry

Image 1. Immunohistochemistry of paraffin-embedded human pancreatic tissue using ABIN7159667 at dilution of 1:100