

Datasheet for ABIN7159679

anti-MFGE8 antibody**2** Images[Go to Product page](#)

Overview

Quantity:	100 µg
Target:	MFGE8
Reactivity:	Human
Host:	Mouse
Clonality:	Monoclonal
Application:	ELISA, Immunohistochemistry (IHC)

Product Details

Immunogen:	Recombinant Human MFGE8 protein
Clone:	2B2D10
Isotype:	IgG2b
Cross-Reactivity:	Human
Purification:	Protein G purified

Target Details

Target:	MFGE8
Alternative Name:	MFGE8 (MFGE8 Products)
Background:	Background: Human MFGE8(milk fat globule-EGF factor 8,also lactadherin, breast epithelial antigen BA46, and medin) is a 46 kDa, secreted, monomeric glycoprotein that is associated with the human milk fat globule (HMFG) membrane.It is expressed by mammary epithelial cell surfaces, artery media, and in several carcinomas .Human MGFE8 is synthesized as a 387

Target Details

amino acid (aa) precursor that contains a 23 aa signal sequence and a 364 aa mature region. The mature molecule contains four Nlinked glycosylation sites, an aminoterminal EGF like domain, plus C1 and C2 Iglike domains which are related to discoidin I and homologous to those of human coagulation factors V and VIII . Within the EGF like domain is an ArgGlyAsp(RGD) sequence, which is strategically placed in a hairpin loop between two antiparallel beta strands. In this way, the EGFlke domain serves as a scaffold for the RGD sequence, which is proposed to promote cell adhesion by binding cellsurface integrin receptors, such as $\alpha_5\beta_1$. Human MFGE8 shares 59 % , 58 % , 56 % , and 52 % aa sequence identity with porcine, bovine, rat, and mouse MFGE8,respectively. Functionally, MFGE8 in milk is reported to block rotavirus infection . MFGE8 expression by macrophages promotes the phagocytosis of apoptotic thymocytes by forming a bridge between phosphatidylserine on apoptotic cells, and $\alpha_5\beta_1$ integrin on phagocytes . The MFGE8 expression by macrophages controls the accumulation of apoptotic membrane fragments in atherosclerotic plaques and substantially limits lesion development .

Aliases: Lactadherin,Breast epithelial antigen,BA46 ,HMFG,MFGM Milk fat globule-EGF factor 8

UniProt: [Q08431](#)

Pathways: [SARS-CoV-2 Protein Interactome](#)

Application Details

Application Notes: Recommended dilution:IHC:1:50-1:500,

Restrictions: For Research Use only

Handling

Format: Liquid

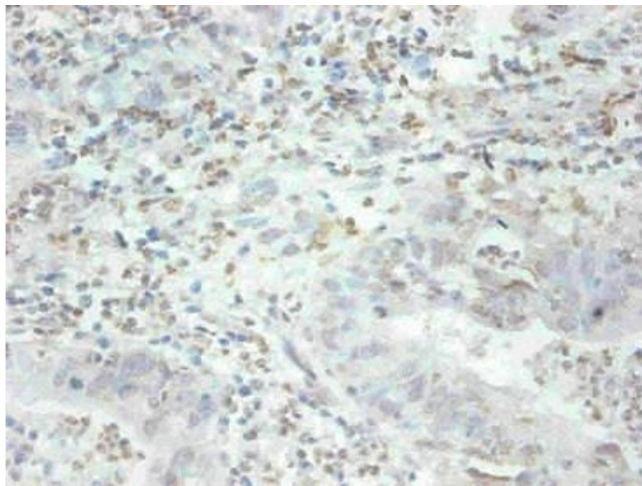
Buffer: Preservative: 0.03 % Proclin 300
Constituents: 50 % Glycerol, 0.01M PBS, PH 7.4

Preservative: ProClin

Precaution of Use: This product contains ProClin: a POISONOUS AND HAZARDOUS SUBSTANCE which should be handled by trained staff only.

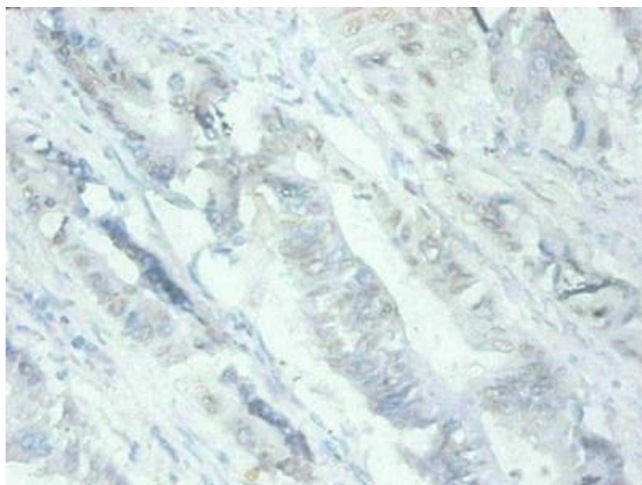
Storage: -20 °C,-80 °C

Storage Comment: Upon receipt, store at -20°C or -80°C. Avoid repeated freeze.



Immunohistochemistry

Image 1. Immunohistochemical of paraffin-embedded human breast cancer tissue using ABIN7159679 at dilution of 1:200



Immunohistochemistry

Image 2. Immunohistochemical of paraffin-embedded human Colon cancer tissues using ABIN7159679 at dilution of 1:200