

Datasheet for ABIN7159682  
**anti-RFX1 antibody (AA 36-133)**

## 3 Images

[Go to Product page](#)

## Overview

|                      |  |
|----------------------|--|
| Quantity:            | 100 µg   |
| Target:              | RFX1   |
| Binding Specificity: | AA 36-133  |
| Reactivity:          | Human  |
| Host:                | Rabbit   |
| Clonality:           | Polyclonal   |
| Conjugate:           | This RFX1 antibody is un-conjugated                      |
| Application:         | Western Blotting (WB), ELISA, Immunohistochemistry (IHC) |

## Product Details

|                   |  |
|-------------------|--|
| Immunogen:        | Recombinant Human MHC class II regulatory factor RFX1 protein (36-133AA) |
| Isotype:          | IgG  |
| Cross-Reactivity: | Human  |
| Purification:     | >95%, Protein G purified   |

## Target Details

|                   |   |
|-------------------|---|
| Target:           | RFX1  |
| Alternative Name: | RFX1 ( <a href="#">RFX1 Products</a> )  |
| Background:       | Background: Regulatory factor essential for MHC class II genes expression. Binds to the X boxes of MHC class II genes. Also binds to an inverted repeat (ENH1) required for hepatitis B |

## Target Details

virus genes expression and to the most upstream element (alpha) of the RPL30 promoter.

Aliases: AI047719 antibody, AI385641 antibody, EF-C antibody, EFC antibody, Enhancer factor C antibody, MHC class II regulatory factor RFX antibody, MHC class II regulatory factor RFX1 antibody, Regulatory factor X 1 antibody, Regulatory factor X, 1 (influences HLA class II expression) antibody, Regulatory factor X1 antibody, RFX antibody, RFX-1 antibody, Rfx1 antibody, RFX1\_HUMAN antibody, Trans-acting regulatory factor 1 antibody, Transcription factor RFX1 antibody

UniProt: [P22670](#)

Pathways: [Human Leukocyte Antigen \(HLA\) in Adaptive Immune Response](#)

## Application Details

Application Notes: Recommended dilution: WB:1:500-1:5000, IHC:1:500-1:1000,

Restrictions: For Research Use only

## Handling

Format: Liquid

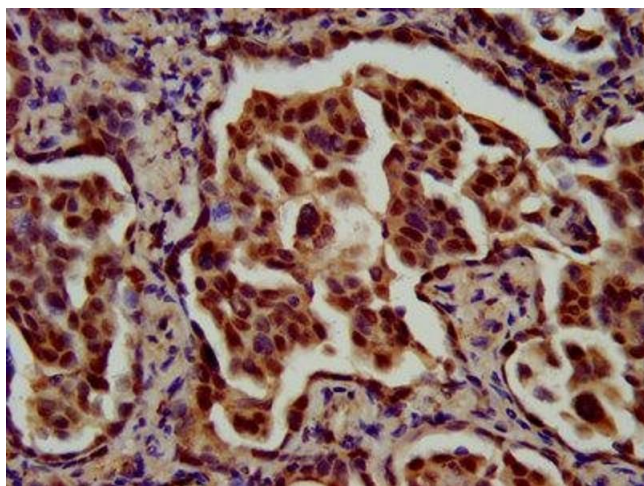
Buffer: Preservative: 0.03 % Proclin 300  
Constituents: 50 % Glycerol, 0.01M PBS, pH 7.4

Preservative: ProClin

Precaution of Use: This product contains ProClin: a POISONOUS AND HAZARDOUS SUBSTANCE which should be handled by trained staff only.

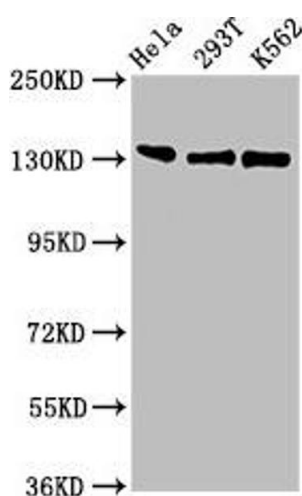
Storage: -20 °C,-80 °C

Storage Comment: Upon receipt, store at -20°C or -80°C. Avoid repeated freeze.



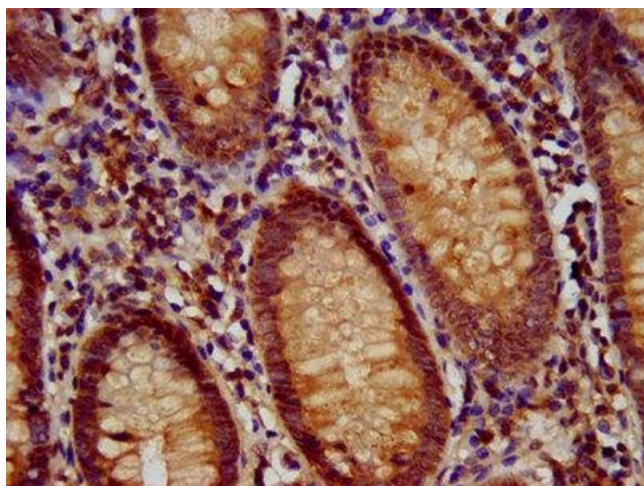
#### Immunohistochemistry

**Image 1.** IHC image of ABIN7159682 diluted at 1:700 and staining in paraffin-embedded human lung cancer performed on a Leica Bond™ system. After dewaxing and hydration, antigen retrieval was mediated by high pressure in a citrate buffer (pH 6.0). Section was blocked with 10 % normal goat serum 30 min at RT. Then primary antibody (1 % BSA) was incubated at 4 °C overnight. The primary is detected by a biotinylated secondary antibody and visualized using an HRP conjugated SP system.



#### Western Blotting

**Image 2.** Western Blot Positive WB detected in: HeLa whole cell lysate, 293T whole cell lysate, K562 whole cell lysate All lanes: RFX1 antibody at 3 µg/mL Secondary Goat polyclonal to rabbit IgG at 1/50000 dilution Predicted band size: 105 kDa Observed band size: 105 kDa



#### Immunohistochemistry

**Image 3.** IHC image of ABIN7159682 diluted at 1:700 and staining in paraffin-embedded human appendix tissue performed on a Leica Bond™ system. After dewaxing and hydration, antigen retrieval was mediated by high pressure in a citrate buffer (pH 6.0). Section was blocked with 10 % normal goat serum 30 min at RT. Then primary antibody (1 % BSA) was incubated at 4 °C overnight. The primary is detected by a biotinylated secondary antibody and visualized using an HRP conjugated SP system.