



[Go to Product page](#)

Datasheet for ABIN7159686

anti-CHCHD3 antibody (AA 1-227)

3 Images

Overview

Quantity:	100 µL
Target:	CHCHD3
Binding Specificity:	AA 1-227
Reactivity:	Human
Host:	Rabbit
Clonality:	Polyclonal
Conjugate:	This CHCHD3 antibody is un-conjugated
Application:	Western Blotting (WB), Immunohistochemistry (IHC), ELISA

Product Details

Immunogen:	Recombinant Human MICOS complex subunit MIC19 protein (1-227AA)
Isotype:	IgG
Cross-Reactivity:	Human, Mouse
Purification:	Antigen Affinity Purified

Target Details

Target:	CHCHD3
Alternative Name:	CHCHD3 (CHCHD3 Products)
Background:	Background: Component of the MICOS complex, a large protein complex of the mitochondrial inner membrane that plays crucial roles in the maintenance of crista junctions, inner membrane

Target Details

architecture, and formation of contact sites to the outer membrane. Has also been shown to function as a transcription factor which binds to the BAG1 promoter and represses BAG1 transcription. Plays an important role in the maintenance of the MICOS complex stability and the mitochondrial cristae morphology (PubMed:25781180).

Aliases: CHCH3_HUMAN antibody, CHCHD 3 antibody, Chchd3 antibody, Coiled coil helix coiled coil helix domain containing 3 antibody, Coiled coil helix coiled coil helix domain containing protein 3 mitochondrial antibody, Coiled-coil-helix-coiled-coil-helix domain-containing protein 3 antibody, FLJ20420 antibody, MINOS3 antibody, mitochondrial antibody, Mitochondrial inner membrane organizing system 3 antibody, PPP1R22 antibody, Protein phosphatase 1 regulatory subunit 22 antibody

UniProt: [Q9NX63](#)

Application Details

Application Notes: Recommended dilution: WB:1:1000-1:5000, IHC:1:20-1:200,

Restrictions: For Research Use only

Handling

Format: Liquid

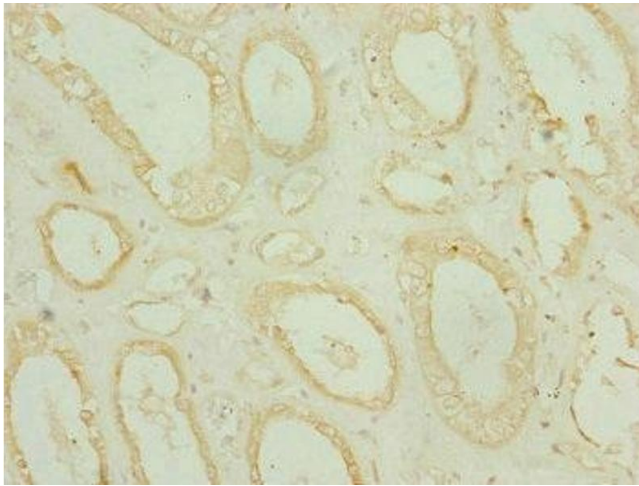
Buffer: PBS with 0.02 % sodium azide, 50 % glycerol, pH 7.3.

Preservative: Sodium azide

Precaution of Use: This product contains Sodium azide: a POISONOUS AND HAZARDOUS SUBSTANCE which should be handled by trained staff only.

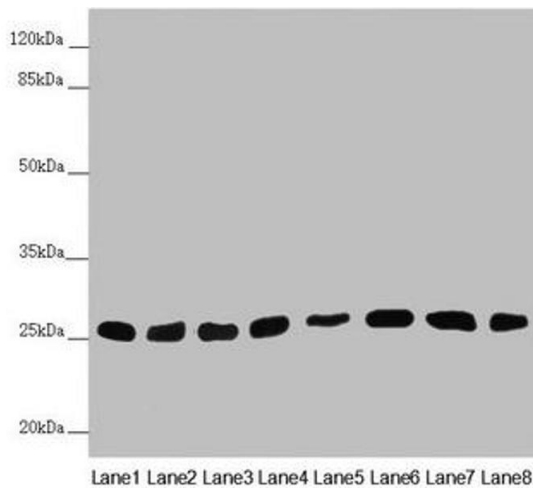
Storage: -20 °C,-80 °C

Storage Comment: Upon receipt, store at -20°C or -80°C. Avoid repeated freeze.



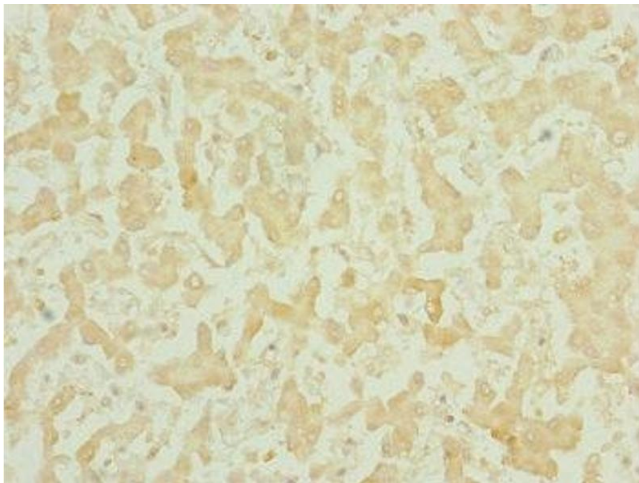
Immunohistochemistry

Image 1. Immunohistochemistry of paraffin-embedded human kidney tissue using ABIN7159686 at dilution of 1:100



Western Blotting

Image 2. Western blot All lanes: CHCHD3 antibody at 0.56 μ g/mL Lane 1: Mouse heart tissue Lane 2: Mouse kidney tissue Lane 3: Mouse lung tissue Lane 4: A549 whole cell lysate Lane 5: HepG2 whole cell lysate Lane 6: 293T whole cell lysate Lane 7: A431 whole cell lysate Lane 8: Hela whole cell lysate Secondary Goat polyclonal to rabbit IgG at 1/10000 dilution Predicted band size: 26 kDa Observed band size: 26 kDa



Immunohistochemistry

Image 3. Immunohistochemistry of paraffin-embedded human liver tissue using ABIN7159686 at dilution of 1:100