



[Go to Product page](#)

Datasheet for ABIN7159692  
**anti-APOOL antibody (AA 163-268)**

4 Images

### Overview

Quantity:	100 µg
Target:	APOOL
Binding Specificity:	AA 163-268
Reactivity:	Human
Host:	Rabbit
Clonality:	Polyclonal
Conjugate:	This APOOL antibody is un-conjugated
Application:	ELISA, Immunohistochemistry (IHC), Immunofluorescence (IF)

### Product Details

Immunogen:	Recombinant Human MICOS complex subunit MIC27 protein (163-268AA)
Isotype:	IgG
Cross-Reactivity:	Human
Purification:	>95%, Protein G purified

### Target Details

Target:	APOOL
Alternative Name:	APOOL ( <a href="#">APOOL Products</a> )
Background:	Background: Component of the MICOS complex, a large protein complex of the mitochondrial inner membrane that plays crucial roles in the maintenance of crista junctions, inner membrane

## Target Details

---

architecture, and formation of contact sites to the outer membrane. Specifically binds to cardiolipin (in vitro) but not to the precursor lipid phosphatidylglycerol. Plays a crucial role in crista junction formation and mitochondrial function (PubMed:23704930), (PubMed:25764979). Aliases: AAIR8193 antibody, Apolipoprotein O-like antibody, APOOL antibody, APOOL\_HUMAN antibody, CXorf33 antibody, FAM121A antibody, Family with sequence similarity 121A antibody, MGC129748 antibody, Protein FAM121A antibody, UNQ8193 antibody

UniProt: [Q6UXV4](#)

## Application Details

---

Application Notes: Recommended dilution: IHC:1:20-1:200, IF:1:50-1:200,

Restrictions: For Research Use only

## Handling

---

Format: Liquid

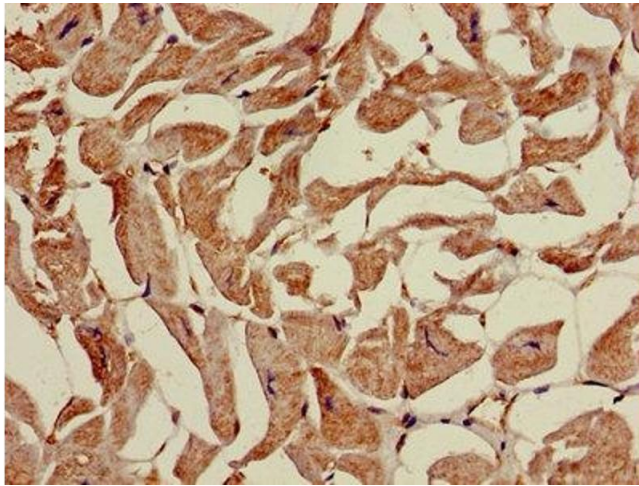
Buffer: Preservative: 0.03 % Proclin 300  
Constituents: 50 % Glycerol, 0.01M PBS, PH 7.4

Preservative: ProClin

Precaution of Use: This product contains ProClin: a POISONOUS AND HAZARDOUS SUBSTANCE which should be handled by trained staff only.

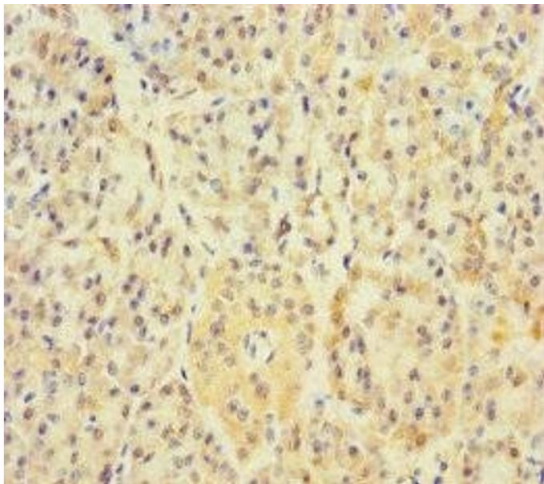
Storage: -20 °C,-80 °C

Storage Comment: Upon receipt, store at -20°C or -80°C. Avoid repeated freeze.



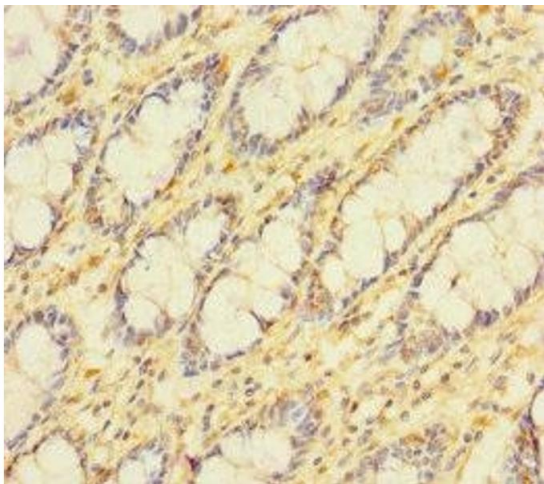
#### Immunohistochemistry

**Image 1.** Immunohistochemistry of paraffin-embedded human heart tissue using ABIN7159692 at dilution of 1:100



#### Immunohistochemistry

**Image 2.** Immunohistochemistry of paraffin-embedded human pancreatic tissue using ABIN7159692 at dilution of 1:100



#### Immunohistochemistry

**Image 3.** Immunohistochemistry of paraffin-embedded human colon tissue using ABIN7159692 at dilution of 1:100

Please check the [product details page](#) for more images. Overall 4 images are available for ABIN7159692.