



[Go to Product page](#)

Datasheet for ABIN7159750
anti-MAP1A antibody (AA 1979-2168)

3 Images

Overview

Quantity:	100 µg
Target:	MAP1A
Binding Specificity:	AA 1979-2168
Reactivity:	Human
Host:	Rabbit
Clonality:	Polyclonal
Conjugate:	This MAP1A antibody is un-conjugated
Application:	ELISA, Immunohistochemistry (IHC), Immunofluorescence (IF)

Product Details

Immunogen:	Recombinant Human Microtubule-associated protein 1A protein (1979-2168AA)
Isotype:	IgG
Cross-Reactivity:	Human
Purification:	>95%, Protein G purified

Target Details

Target:	MAP1A
Alternative Name:	MAP1A (MAP1A Products)
Background:	Background: Structural protein involved in the filamentous cross-bridging between microtubules and other skeletal elements.

Target Details

Aliases: MAP 1A antibody, MAP 1L antibody, MAP-1A antibody, MAP1 light chain LC2 antibody, Map1a antibody, MAP1A_HUMAN antibody, MAP1L antibody, Microtubule associated protein 1 like antibody, Microtubule associated protein 1A antibody, MTAP 1A antibody, MTAP1A antibody, Proliferation related protein p80 antibody, Proliferation-related protein p80 antibody

UniProt: [P78559](#)

Pathways: [Microtubule Dynamics](#), [Sensory Perception of Sound](#)

Application Details

Application Notes: Recommended dilution: IHC:1:200-1:500, IF:1:50-1:200,

Restrictions: For Research Use only

Handling

Format: Liquid

Buffer: Preservative: 0.03 % Proclin 300
Constituents: 50 % Glycerol, 0.01M PBS, pH 7.4

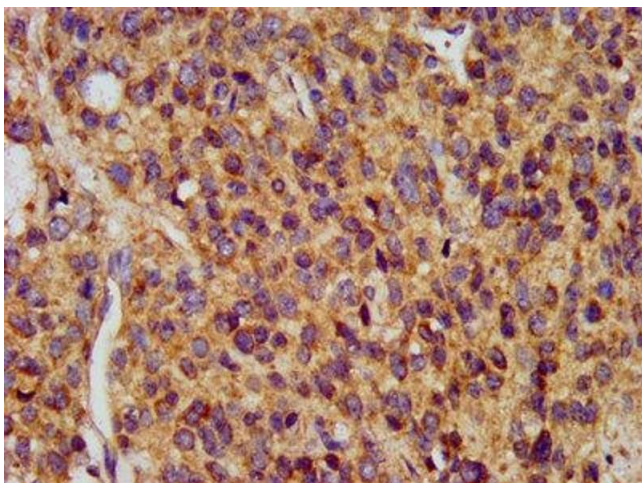
Preservative: ProClin

Precaution of Use: This product contains ProClin: a POISONOUS AND HAZARDOUS SUBSTANCE which should be handled by trained staff only.

Storage: -20 °C,-80 °C

Storage Comment: Upon receipt, store at -20°C or -80°C. Avoid repeated freeze.

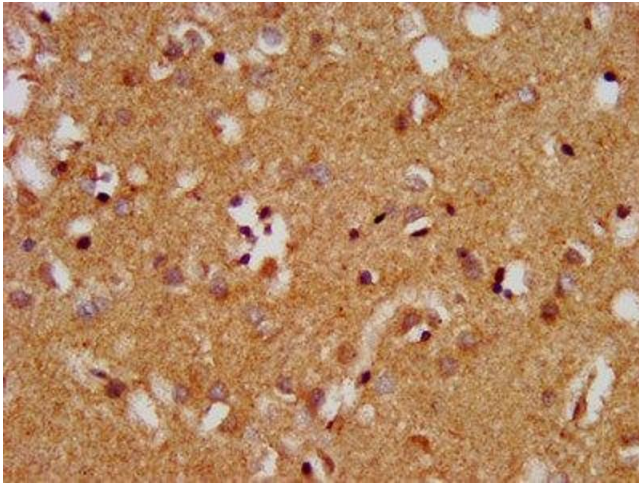
Images



Immunohistochemistry

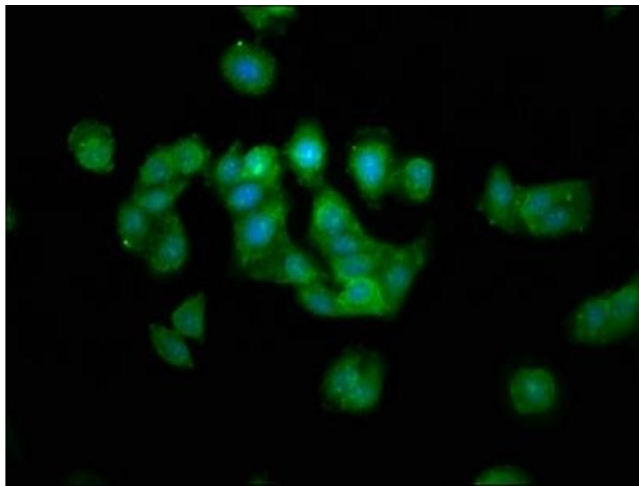
Image 1. IHC image of ABIN7159750 diluted at 1:400 and staining in paraffin-embedded human glioma performed on a Leica Bond™ system. After dewaxing and hydration, antigen retrieval was mediated by high pressure in a citrate buffer (pH 6.0). Section was blocked with 10% normal goat serum 30min at RT. Then primary antibody (1% BSA) was incubated at 4°C overnight. The primary is detected by a biotinylated secondary antibody and visualized using an

HRP conjugated SP system.



Immunohistochemistry

Image 2. IHC image of ABIN7159750 diluted at 1:400 and staining in paraffin-embedded human brain tissue performed on a Leica Bond™ system. After dewaxing and hydration, antigen retrieval was mediated by high pressure in a citrate buffer (pH 6.0). Section was blocked with 10% normal goat serum 30min at RT. Then primary antibody (1% BSA) was incubated at 4°C overnight. The primary is detected by a biotinylated secondary antibody and visualized using an HRP conjugated SP system.



Immunofluorescence

Image 3. Immunofluorescence staining of HepG2 cells with ABIN7159750 at 1:133, counter-stained with DAPI. The cells were fixed in 4% formaldehyde, permeabilized using 0.2% Triton X-100 and blocked in 10% normal Goat Serum. The cells were then incubated with the antibody overnight at 4°C. The secondary antibody was Alexa Fluor 488-conjugated AffiniPure Goat Anti-Rabbit IgG(H+L).