



[Go to Product page](#)

Datasheet for ABIN7159762
anti-MAPRE1 antibody (AA 2-268)

2 Images

Overview

Quantity:	100 µg
Target:	MAPRE1
Binding Specificity:	AA 2-268
Reactivity:	Human
Host:	Rabbit
Clonality:	Polyclonal
Conjugate:	This MAPRE1 antibody is un-conjugated
Application:	Immunohistochemistry (IHC), ELISA

Product Details

Immunogen:	Recombinant Human Microtubule-associated protein RP/EB family member 1 protein (2-268AA)
Isotype:	IgG
Cross-Reactivity:	Human
Purification:	>95%, Protein G purified

Target Details

Target:	MAPRE1
Alternative Name:	MAPRE1 (MAPRE1 Products)
Background:	Background: Binds to the plus end of microtubules and regulates the dynamics of the

Target Details

microtubule cytoskeleton. Promotes cytoplasmic microtubule nucleation and elongation. May be involved in spindle function by stabilizing microtubules and anchoring them at centrosomes. May play a role in cell migration.

Aliases: 5530600P05Rik antibody, Adenomatous polyposis coli binding protein EB 1 antibody, Adenomatous polyposis coli binding protein EB1 antibody, A1462499 antibody, A1504412 antibody, APC binding protein EB 1 antibody, APC binding protein EB1 antibody, APC-binding protein EB1 antibody, AW260097 antibody, BIM1p antibody, D2Ertd459e antibody, EB 1 antibody, EB1 antibody, End binding protein 1 antibody, End-binding protein 1 antibody, fa01e12 antibody, fc23e11 antibody, fi33c06 antibody, MAPRE 1 antibody, MAPRE1 antibody, Mapre3 antibody, MARE1_HUMAN antibody, MGC117374 antibody, MGC129946 antibody, MGC52508 antibody, Microtubule associated protein RP/EB family member 1 antibody, Microtubule-associated protein RP/EB family member 1 antibody, wu:fa01e12 antibody, wu:fc23e11 antibody, wu:fi33c06 antibody, zgc:55428 antibody, zgc:77807 antibody, zgc:85755 antibody

UniProt: [Q15691](#)

Pathways: [M Phase](#)

Application Details

Application Notes: Recommended dilution: IHC:1:20-1:200,

Restrictions: For Research Use only

Handling

Format: Liquid

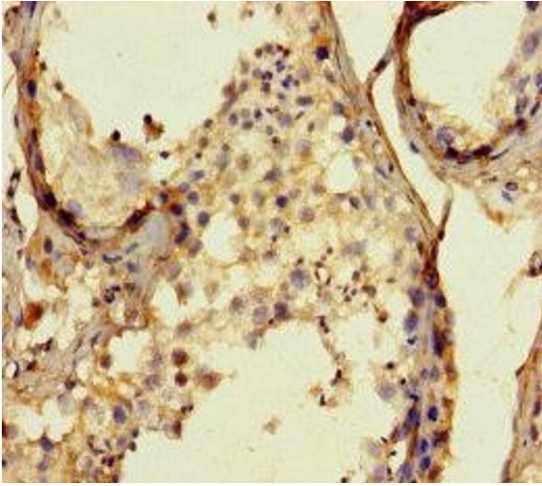
Buffer: Preservative: 0.03 % Proclin 300
Constituents: 50 % Glycerol, 0.01M PBS, PH 7.4

Preservative: ProClin

Precaution of Use: This product contains ProClin: a POISONOUS AND HAZARDOUS SUBSTANCE which should be handled by trained staff only.

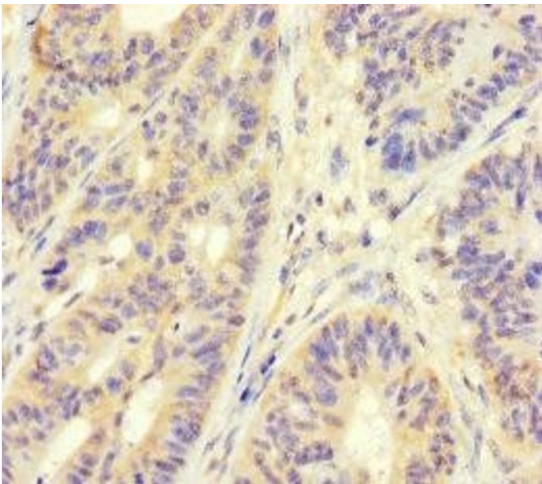
Storage: -20 °C,-80 °C

Storage Comment: Upon receipt, store at -20°C or -80°C. Avoid repeated freeze.



Immunohistochemistry

Image 1. Immunohistochemistry of paraffin-embedded human testis tissue using ABIN7159762 at dilution of 1:100



Immunohistochemistry

Image 2. Immunohistochemistry of paraffin-embedded human colon cancer using ABIN7159762 at dilution of 1:100