

Datasheet for ABIN7159766
anti-MAPRE2 antibody (AA 159-240)



[Go to Product page](#)

2 Images

Overview

| | |
|----------------------|-------------------------------------------------------|
| Quantity: | 100 µg |
| Target: | MAPRE2 |
| Binding Specificity: | AA 159-240 |
| Reactivity: | Human |
| Host: | Rabbit |
| Clonality: | Polyclonal |
| Conjugate: | This MAPRE2 antibody is un-conjugated |
| Application: | Western Blotting (WB), ELISA, Immunofluorescence (IF) |

Product Details

| | |
|-------------------|--------------------------------------------------------------------------------------------|
| Immunogen: | Recombinant Human Microtubule-associated protein RP/EB family member 2 protein (159-240AA) |
| Isotype: | IgG |
| Cross-Reactivity: | Human, Mouse |
| Purification: | >95%, Protein G purified |

Target Details

| | |
|-------------------|------------------------------------------------------------------------------------------------|
| Target: | MAPRE2 |
| Alternative Name: | MAPRE2 (MAPRE2 Products) |
| Background: | Background: May be involved in microtubule polymerization, and spindle function by stabilizing |

Target Details

microtubules and anchoring them at centrosomes. May play a role in cell migration (By similarity).

Aliases: APC binding protein EB1 antibody, APC binding protein EB2 antibody, APC-binding protein EB2 antibody, EB1 antibody, EB2 antibody, End binding protein 2 antibody, End-binding protein 2 antibody, H.sapiens mRNA for novel T cell activation protein antibody, MAPRE2 antibody, MARE2_HUMAN antibody, Microtubule associated protein RP/EB family member 2 antibody, Microtubule-associated protein RP/EB family member 2 antibody, RP1 antibody, T cell activation protein EB1 family antibody

UniProt: [Q15555](#)

Application Details

Application Notes: Recommended dilution: WB:1:500-1:5000, IF:1:50-1:200,

Restrictions: For Research Use only

Handling

Format: Liquid

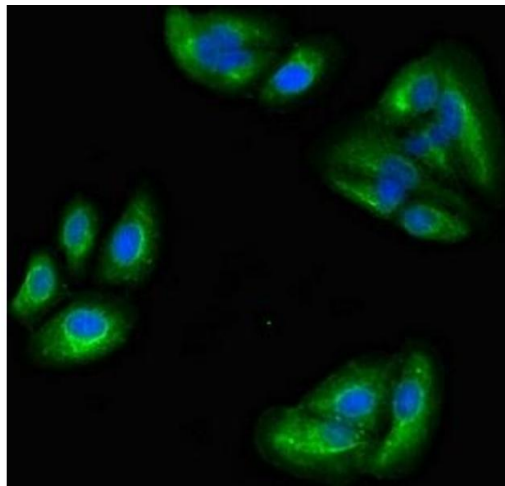
Buffer: Preservative: 0.03 % Proclin 300
Constituents: 50 % Glycerol, 0.01M PBS, pH 7.4

Preservative: ProClin

Precaution of Use: This product contains ProClin: a POISONOUS AND HAZARDOUS SUBSTANCE which should be handled by trained staff only.

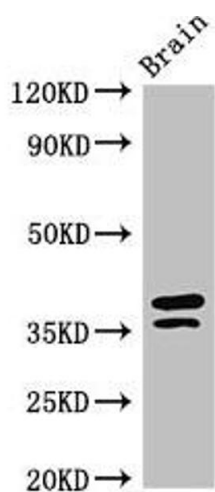
Storage: -20 °C,-80 °C

Storage Comment: Upon receipt, store at -20°C or -80°C. Avoid repeated freeze.



Immunofluorescence

Image 1. Immunofluorescent analysis of HepG2 cells using ABIN7159766 at dilution of 1:100 and Alexa Fluor 488-conjugated AffiniPure Goat Anti-Rabbit IgG(H+L)



Western Blotting

Image 2. Western Blot Positive WB detected in: Mouse brain tissue All lanes: MAPRE2 antibody at 3 µg/mL Secondary Goat polyclonal to rabbit IgG at 1/50000 dilution Predicted band size: 38, 30, 36, 33, 31 kDa Observed band size: 38, 36 kDa