

Datasheet for ABIN7159821
anti-MCMBP antibody (AA 1-240)



[Go to Product page](#)

2 Images

Overview

Quantity:	100 µL
Target:	MCMBP
Binding Specificity:	AA 1-240
Reactivity:	Human
Host:	Rabbit
Clonality:	Polyclonal
Conjugate:	This MCMBP antibody is un-conjugated
Application:	ELISA, Immunohistochemistry (IHC)

Product Details

Immunogen:	Recombinant Human Mini-chromosome maintenance complex-binding protein (1-240AA)
Isotype:	IgG
Cross-Reactivity:	Human
Purification:	Antigen Affinity Purified

Target Details

Target:	MCMBP
Alternative Name:	MCMBP (MCMBP Products)
Background:	Background: Associated component of the MCM complex that acts as a regulator of DNA replication. Binds to the MCM complex during late S phase and promotes the disassembly of

Target Details

the MCM complex from chromatin, thereby acting as a key regulator of pre-replication complex (pre-RC) unloading from replicated DNA. Can dissociate the MCM complex without addition of ATP, probably acts by destabilizing interactions of each individual subunits of the MCM complex. Required for sister chromatid cohesion.

Aliases: MCMBP antibody, C10orf119 antibody, Mini-chromosome maintenance complex-binding protein antibody, MCM-BP antibody, MCM-binding protein antibody

UniProt: [Q9BTE3](#)

Pathways: [Chromatin Binding](#)

Application Details

Application Notes: Recommended dilution: IHC:1:20-1:200,

Restrictions: For Research Use only

Handling

Format: Liquid

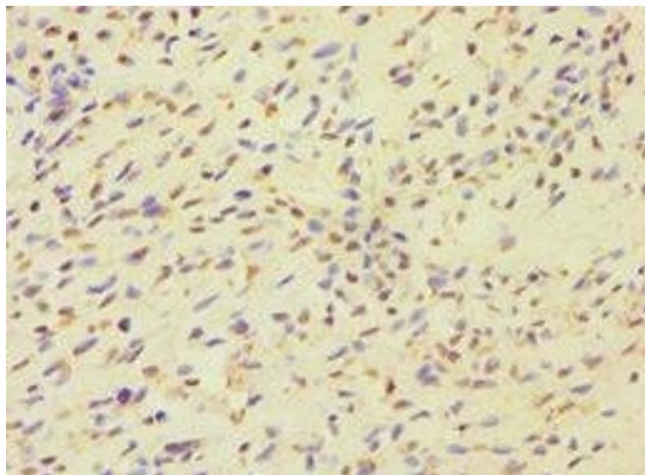
Buffer: PBS with 0.02 % sodium azide, 50 % glycerol, pH 7.3.

Preservative: Sodium azide

Precaution of Use: This product contains Sodium azide: a POISONOUS AND HAZARDOUS SUBSTANCE which should be handled by trained staff only.

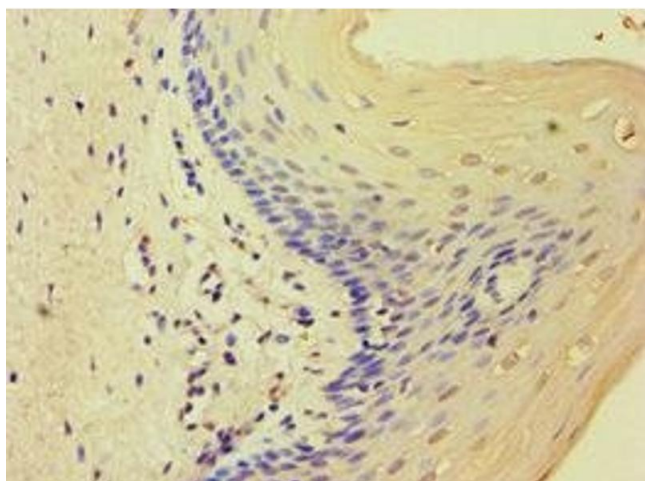
Storage: -20 °C,-80 °C

Storage Comment: Upon receipt, store at -20°C or -80°C. Avoid repeated freeze.



Immunohistochemistry

Image 1. Immunohistochemistry of paraffin-embedded human breast cancer using ABIN7159821 at dilution of 1:100



Immunohistochemistry

Image 2. Immunohistochemistry of paraffin-embedded human cervical cancer using ABIN7159821 at dilution of 1:100