

Datasheet for ABIN7159837  
**anti-PLD6 antibody (AA 1-252)**



[Go to Product page](#)

3 Images

## Overview

Quantity:	100 µg
Target:	PLD6
Binding Specificity:	AA 1-252
Reactivity:	Human
Host:	Rabbit
Clonality:	Polyclonal
Conjugate:	This PLD6 antibody is un-conjugated
Application:	ELISA, Western Blotting (WB), Immunohistochemistry (IHC), Immunofluorescence (IF)

## Product Details

Immunogen:	Recombinant Human Mitochondrial cardiolipin hydrolase protein (1-252AA)
Isotype:	IgG
Cross-Reactivity:	Human, Mouse
Purification:	>95%, Protein G purified

## Target Details

Target:	PLD6
Alternative Name:	PLD6 ( <a href="#">PLD6 Products</a> )
Background:	Background: Endonuclease that plays a critical role in PIWI-interacting RNA (piRNA) biogenesis during spermatogenesis. piRNAs provide essential protection against the activity of mobile

## Target Details

genetic elements (By similarity). piRNA-mediated transposon silencing is thus critical for maintaining genome stability, in particular in germline cells when transposons are mobilized as a consequence of wide-spread genomic demethylation (By similarity). Has been proposed to act as a cardiolipin hydrolase to generate phosphatidic acid at mitochondrial surface (By similarity). Although it cannot be excluded that it can act as a phospholipase in some circumstances, it should be noted that cardiolipin hydrolase activity is either undetectable in vitro, or very low (PubMed:21397848). In addition, cardiolipin is almost exclusively found on the inner mitochondrial membrane, while PLD6 localizes to the outer mitochondrial membrane, facing the cytosol (PubMed:21397848). Has been shown to be a backbone-non-specific, single strand-specific nuclease, cleaving either RNA or DNA substrates with similar affinity. Produces 5' phosphate and 3' hydroxyl termini, suggesting it could directly participate in the processing of primary piRNA transcripts (By similarity). Also acts as a regulator of mitochondrial shape through facilitating mitochondrial fusion (PubMed:17028579, PubMed:26711011).

Aliases: Choline phosphatase 6 antibody, Mitochondrial cardiolipin hydrolase antibody, Mitochondrial phospholipase antibody, MitoPLD antibody, Phosphatidylcholine hydrolyzing phospholipase D6 antibody, Phosphatidylcholine-hydrolyzing phospholipase D6 antibody, Phospholipase D family member 6 antibody, Phospholipase D6 antibody, PLD 6 antibody, pld6 antibody, PLD6\_HUMAN antibody, Protein zucchini homolog antibody, ZUC antibody, Zucchini, Drosophila, homolog of antibody

UniProt: [Q8N2A8](#)

Pathways: [Ribonucleoprotein Complex Subunit Organization](#)

## Application Details

Application Notes: Recommended dilution: WB:1:2000-1:5000, IHC:1:20-1:200, IF:1:50-1:200,

Restrictions: For Research Use only

## Handling

Format: Liquid

Buffer: Preservative: 0.03 % Proclin 300  
Constituents: 50 % Glycerol, 0.01M PBS, PH 7.4

Preservative: ProClin

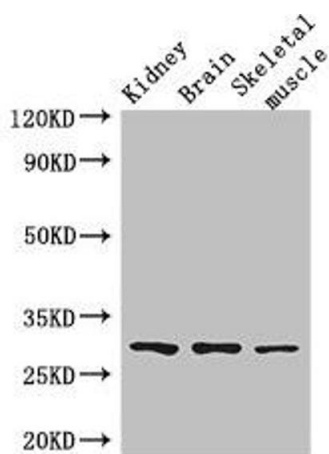
Precaution of Use: This product contains ProClin: a POISONOUS AND HAZARDOUS SUBSTANCE which should be handled by trained staff only.

## Handling

Storage: -20 °C, -80 °C

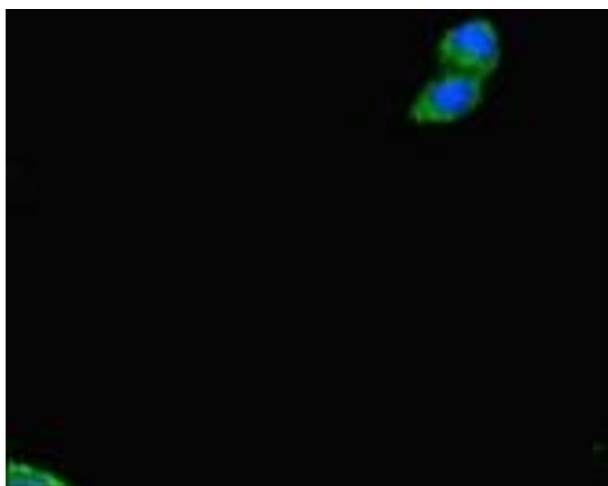
Storage Comment: Upon receipt, store at -20°C or -80°C. Avoid repeated freeze.

## Images



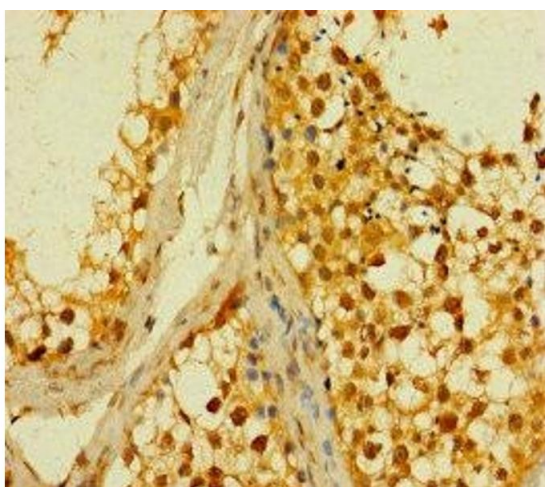
### Western Blotting

**Image 1.** Western Blot Positive WB detected in: Mouse kidney tissue, Mouse brain tissue, Mouse skeletal muscle tissue All lanes: PLD6 antibody at 2.5 µg/mL Secondary Goat polyclonal to rabbit IgG at 1/50000 dilution Predicted band size: 29 kDa Observed band size: 29 kDa



### Immunofluorescence

**Image 2.** Immunofluorescent analysis of HepG2 cells using ABIN7159837 at dilution of 1:100 and Alexa Fluor 488-conjugated AffiniPure Goat Anti-Rabbit IgG(H+L)



### Immunohistochemistry

**Image 3.** Immunohistochemistry of paraffin-embedded human testis tissue using ABIN7159837 at dilution of 1:100