



[Go to Product page](#)

Datasheet for ABIN7159841
anti-SLC25A2 antibody (AA 1-301)

2 Images

Overview

Quantity:	100 µL
Target:	SLC25A2
Binding Specificity:	AA 1-301
Reactivity:	Human
Host:	Rabbit
Clonality:	Polyclonal
Conjugate:	This SLC25A2 antibody is un-conjugated
Application:	ELISA, Immunohistochemistry (IHC)

Product Details

Immunogen:	Recombinant Human Mitochondrial carnitine/acylcarnitine carrier protein (1-301AA)
Isotype:	IgG
Cross-Reactivity:	Human
Purification:	Antigen Affinity Purified

Target Details

Target:	SLC25A2
Alternative Name:	SLC25A2 (SLC25A2 Products)
Background:	Background: Mediates the transport of acylcarnitines of different length across the mitochondrial inner membrane from the cytosol to the mitochondrial matrix for their oxidation

Target Details

by the mitochondrial fatty acid-oxidation pathway.

Aliases: SLC25A20 antibody, CAC antibody, CACTMitochondrial carnitine/acylcarnitine carrier protein antibody, Carnitine/acylcarnitine translocase antibody, CAC antibody, Solute carrier family 25 member 20 antibody

UniProt: [O43772](#)

Application Details

Application Notes: Recommended dilution: IHC:1:20-1:200,

Restrictions: For Research Use only

Handling

Format: Liquid

Buffer: PBS with 0.02 % sodium azide, 50 % glycerol, pH 7.3.

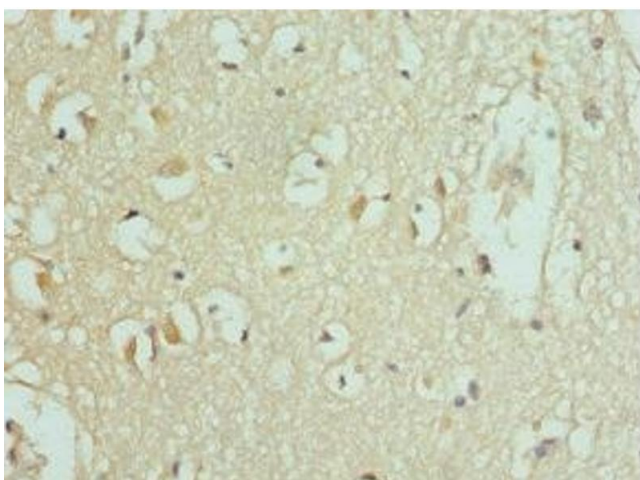
Preservative: Sodium azide

Precaution of Use: This product contains Sodium azide: a POISONOUS AND HAZARDOUS SUBSTANCE which should be handled by trained staff only.

Storage: -20 °C,-80 °C

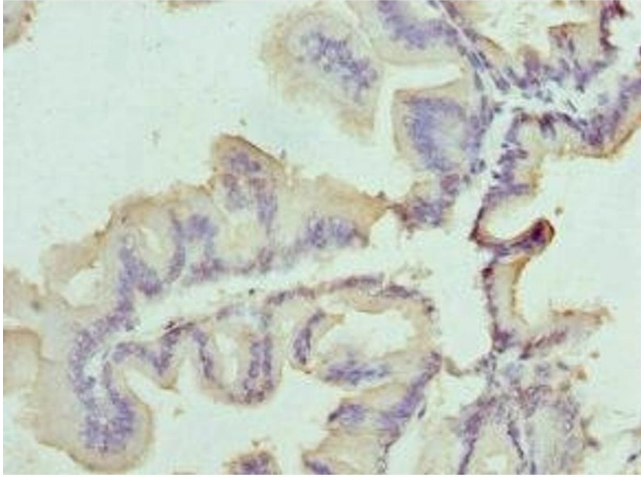
Storage Comment: Upon receipt, store at -20°C or -80°C. Avoid repeated freeze.

Images



Immunohistochemistry

Image 1. Immunohistochemistry of paraffin-embedded human brain tissue using ABIN7159841 at dilution of 1:100



Immunohistochemistry

Image 2. Immunohistochemistry of paraffin-embedded human prostate cancer using ABIN7159841 at dilution of 1:100