

Datasheet for ABIN7159857  
**anti-ENOSF1 antibody (AA 171-286)**[Go to Product page](#)

## 2 Images

## Overview

Quantity:	100 µg
Target:	ENOSF1
Binding Specificity:	AA 171-286
Reactivity:	Human
Host:	Rabbit
Clonality:	Polyclonal
Conjugate:	This ENOSF1 antibody is un-conjugated
Application:	ELISA, Immunohistochemistry (IHC)

## Product Details

Immunogen:	Recombinant Human Mitochondrial enolase superfamily member 1 protein (171-286AA)
Isotype:	IgG
Cross-Reactivity:	Human
Purification:	>95%, Protein G purified

## Target Details

Target:	ENOSF1
Alternative Name:	ENOSF1 ( <a href="#">ENOSF1 Products</a> )
Background:	Background: Plays a role in the catabolism of L-fucose, a sugar that is part of the carbohydrates that are attached to cellular glycoproteins. Catalyzes the dehydration of L-fuconate to 2-keto-3-

## Target Details

deoxy-L-fuconate by the abstraction of the 2-proton to generate an enediolate intermediate that is stabilized by the magnesium ion (PubMed:24697329).

Aliases: Antisense RNA to thymidylate synthase antibody, ENOF1\_HUMAN antibody, Enolase superfamily member 1 antibody, ENOSF 1 antibody, enosf1 antibody, HSRTSBETA antibody, Mitochondrial enolase superfamily member 1 antibody, RTS alpha antibody, RTS antibody, RTS beta antibody, RTS beta protein antibody, TYMSAS antibody

UniProt: [Q7L5Y1](#)

## Application Details

Application Notes: Recommended dilution: IHC:1:200-1:500,

Restrictions: For Research Use only

## Handling

Format: Liquid

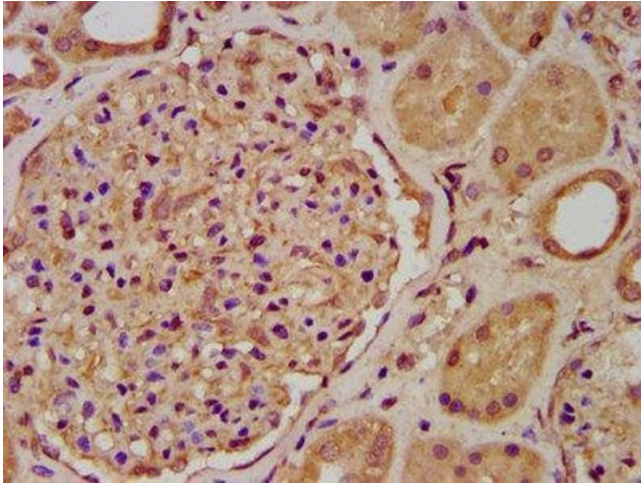
Buffer: Preservative: 0.03 % Proclin 300  
Constituents: 50 % Glycerol, 0.01M PBS, pH 7.4

Preservative: ProClin

Precaution of Use: This product contains ProClin: a POISONOUS AND HAZARDOUS SUBSTANCE which should be handled by trained staff only.

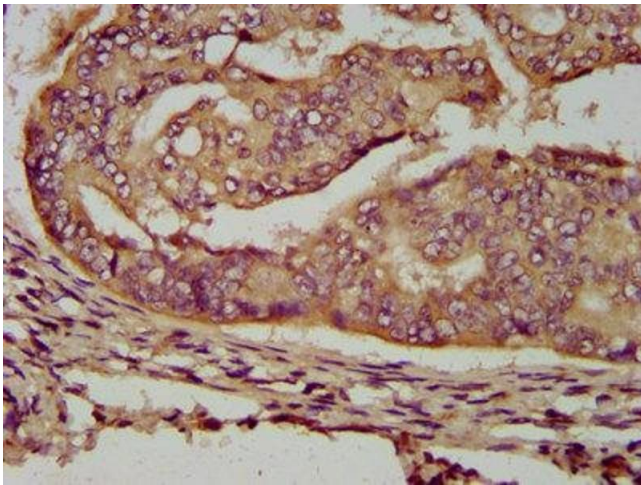
Storage: -20 °C,-80 °C

Storage Comment: Upon receipt, store at -20°C or -80°C. Avoid repeated freeze.



#### Immunohistochemistry

**Image 1.** IHC image of ABIN7159857 diluted at 1:200 and staining in paraffin-embedded human kidney tissue performed on a Leica Bond™ system. After dewaxing and hydration, antigen retrieval was mediated by high pressure in a citrate buffer (pH 6.0). Section was blocked with 10% normal goat serum 30min at RT. Then primary antibody (1% BSA) was incubated at 4°C overnight. The primary is detected by a biotinylated secondary antibody and visualized using an HRP conjugated SP system.



#### Immunohistochemistry

**Image 2.** IHC image of ABIN7159857 diluted at 1:200 and staining in paraffin-embedded human endometrial cancer performed on a Leica Bond™ system. After dewaxing and hydration, antigen retrieval was mediated by high pressure in a citrate buffer (pH 6.0). Section was blocked with 10% normal goat serum 30min at RT. Then primary antibody (1% BSA) was incubated at 4°C overnight. The primary is detected by a biotinylated secondary antibody and visualized using an HRP conjugated SP system.