

Datasheet for ABIN7159861
anti-Fission 1 antibody (AA 1-122)

2 Images

[Go to Product page](#)

Overview

Quantity:	100 µg
Target:	Fission 1 (FIS1)
Binding Specificity:	AA 1-122
Reactivity:	Human
Host:	Rabbit
Clonality:	Polyclonal
Conjugate:	This Fission 1 antibody is un-conjugated
Application:	ELISA, Immunohistochemistry (IHC), Immunofluorescence (IF)

Product Details

Immunogen:	Recombinant Human Mitochondrial fission 1 protein (1-122AA)
Isotype:	IgG
Cross-Reactivity:	Human
Purification:	>95%, Protein G purified

Target Details

Target:	Fission 1 (FIS1)
Alternative Name:	FIS1 (FIS1 Products)
Background:	Background: Involved in the fragmentation of the mitochondrial network and its perinuclear clustering. Plays a minor role in the recruitment and association of the fission mediator

Target Details

dynamamin-related protein 1 (DNM1L) to the mitochondrial surface and mitochondrial fission. Can induce cytochrome c release from the mitochondrion to the cytosol, ultimately leading to apoptosis. Also mediates peroxisomal fission.

Aliases: 2010003014Rik antibody, CGI 135 antibody, CGI135 antibody, FIS 1 antibody, FIS1 antibody, Fis1 homolog antibody, FIS1, S. cerevisiae, homolog of antibody, FIS1_HUMAN antibody, Fission 1 (mitochondrial outer membrane) homolog (S. cerevisiae) antibody, Fission 1 (mitochondrial outer membrane) homolog (yeast) antibody, Fission 1 (mitochondrial outer membrane) homolog antibody, Fission 1 homolog antibody, H NH0132A01.6 antibody, hFis 1 antibody, hFis1 antibody, Mitochondrial fission 1 protein antibody, mitochondrial fission molecule antibody, Tetratricopeptide repeat domain 11 antibody, Tetratricopeptide repeat protein 11 antibody, TPR repeat protein 11 antibody, TTC 11 antibody, TTC11 antibody

UniProt: [Q9Y3D6](#)

Pathways: [Positive Regulation of Endopeptidase Activity](#)

Application Details

Application Notes: Recommended dilution: IHC:1:500-1:1000, IF:1:50-1:500,

Restrictions: For Research Use only

Handling

Format: Liquid

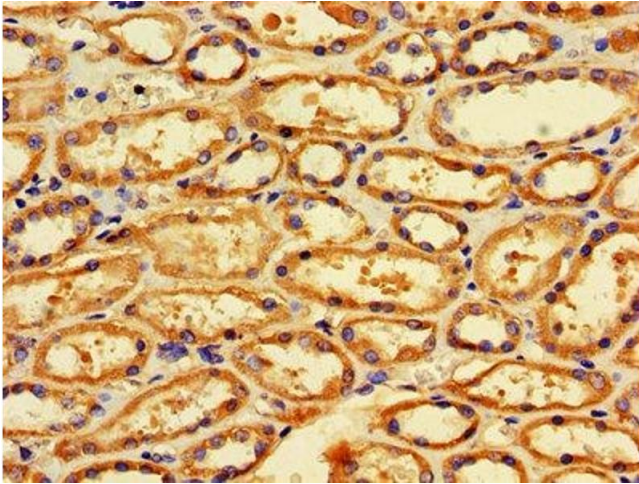
Buffer: Preservative: 0.03 % Proclin 300
Constituents: 50 % Glycerol, 0.01M PBS, PH 7.4

Preservative: ProClin

Precaution of Use: This product contains ProClin: a POISONOUS AND HAZARDOUS SUBSTANCE which should be handled by trained staff only.

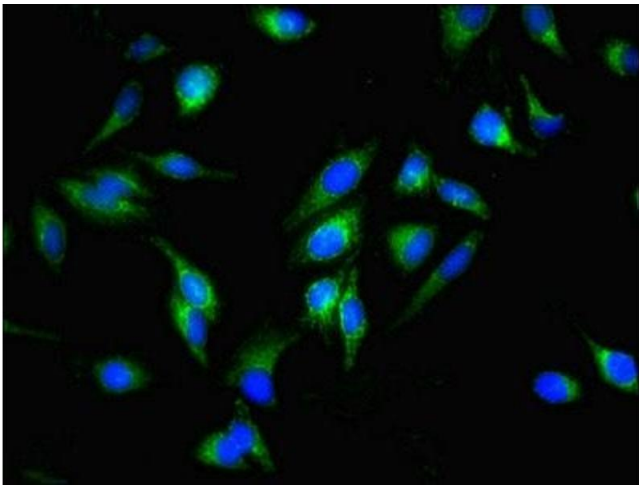
Storage: -20 °C, -80 °C

Storage Comment: Upon receipt, store at -20°C or -80°C. Avoid repeated freeze.



Immunohistochemistry

Image 1. IHC image of ABIN7159861 diluted at 1:600 and staining in paraffin-embedded human kidney tissue performed on a Leica Bond™ system. After dewaxing and hydration, antigen retrieval was mediated by high pressure in a citrate buffer (pH 6.0). Section was blocked with 10% normal goat serum 30min at RT. Then primary antibody (1% BSA) was incubated at 4°C overnight. The primary is detected by a biotinylated secondary antibody and visualized using an HRP conjugated SP system.



Immunofluorescence

Image 2. Immunofluorescent analysis of HeLa cells using ABIN7159861 at dilution of 1:100 and Alexa Fluor 488-conjugated AffiniPure Goat Anti-Rabbit IgG(H+L)