



[Go to Product page](#)

Datasheet for ABIN7159902  
**anti-TIMM17B antibody (AA 1-172)**

2 Images

Overview

Quantity:	100 µL
Target:	TIMM17B
Binding Specificity:	AA 1-172
Reactivity:	Human
Host:	Rabbit
Clonality:	Polyclonal
Conjugate:	This TIMM17B antibody is un-conjugated
Application:	Immunohistochemistry (IHC), ELISA

Product Details

Immunogen:	Recombinant Human Mitochondrial import inner membrane translocase subunit Tim17-B protein (1-172AA)
Isotype:	IgG
Cross-Reactivity:	Human
Purification:	Antigen Affinity Purified

Target Details

Target:	TIMM17B
Alternative Name:	TIMM17B ( <a href="#">TIMM17B Products</a> )
Background:	Background: Essential component of the TIM23 complex, a complex that mediates the

## Target Details

translocation of transit peptide-containing proteins across the mitochondrial inner membrane.  
Aliases: DXS9822 antibody, Inner mitochondrial membrane preprotein translocase antibody, JM3 antibody, Mitochondrial import inner membrane translocase subunit Tim17-B antibody, TI17B\_HUMAN antibody, Tim17b antibody, TIMM17B antibody, Translocase of inner mitochondrial membrane 17 homolog B (yeast) antibody

UniProt: [O60830](#)

## Application Details

Application Notes: Recommended dilution: IHC:1:20-1:200,

Restrictions: For Research Use only

## Handling

Format: Liquid

Buffer: PBS with 0.02 % sodium azide, 50 % glycerol, pH 7.3.

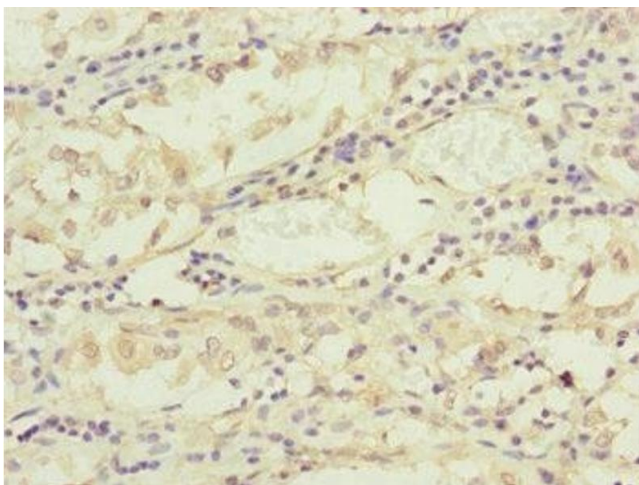
Preservative: Sodium azide

Precaution of Use: This product contains Sodium azide: a POISONOUS AND HAZARDOUS SUBSTANCE which should be handled by trained staff only.

Storage: -20 °C,-80 °C

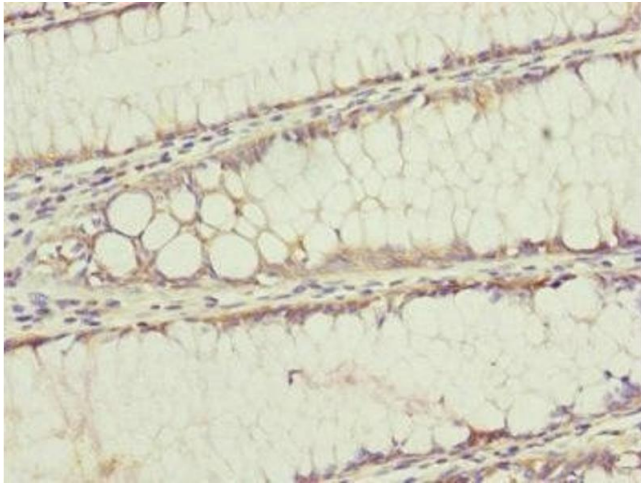
Storage Comment: Upon receipt, store at -20°C or -80°C. Avoid repeated freeze.

## Images



### Immunohistochemistry

**Image 1.** Immunohistochemistry of paraffin-embedded human gastric cancer using ABIN7159902 at dilution of 1:100



### Immunohistochemistry

**Image 2.** Immunohistochemistry of paraffin-embedded human colon cancer using ABIN7159902 at dilution of 1:100