



[Go to Product page](#)

Datasheet for ABIN7159921  
**anti-IMMP2L antibody (AA 1-100)**

1 Image

### Overview

Quantity:	100 µL
Target:	IMMP2L
Binding Specificity:	AA 1-100
Reactivity:	Human
Host:	Rabbit
Clonality:	Polyclonal
Conjugate:	This IMMP2L antibody is un-conjugated
Application:	Immunohistochemistry (IHC), ELISA

### Product Details

Immunogen:	Recombinant Human Mitochondrial inner membrane protease subunit 2 protein (1-100AA)
Isotype:	IgG
Cross-Reactivity:	Human
Purification:	Antigen Affinity Purified

### Target Details

Target:	IMMP2L
Alternative Name:	IMMP2L ( <a href="#">IMMP2L Products</a> )
Background:	Background: Catalyzes the removal of transit peptides required for the targeting of proteins from the mitochondrial matrix, across the inner membrane, into the inter-membrane space.

## Target Details

---

Known to process the nuclear encoded protein DIABLO.

Aliases: IMMP2Mitochondrial inner membrane protease subunit 2 antibody, EC 3.4.21.-antibody, IMP2-like protein antibody

---

UniProt: [Q96T52](#)

---

## Application Details

---

Application Notes: Recommended dilution: IHC:1:20-1:200,

---

Restrictions: For Research Use only

---

## Handling

---

Format: Liquid

---

Buffer: PBS with 0.02 % sodium azide, 50 % glycerol, pH 7.3.

---

Preservative: Sodium azide

---

Precaution of Use: This product contains Sodium azide: a POISONOUS AND HAZARDOUS SUBSTANCE which should be handled by trained staff only.

---

Storage: -20 °C,-80 °C

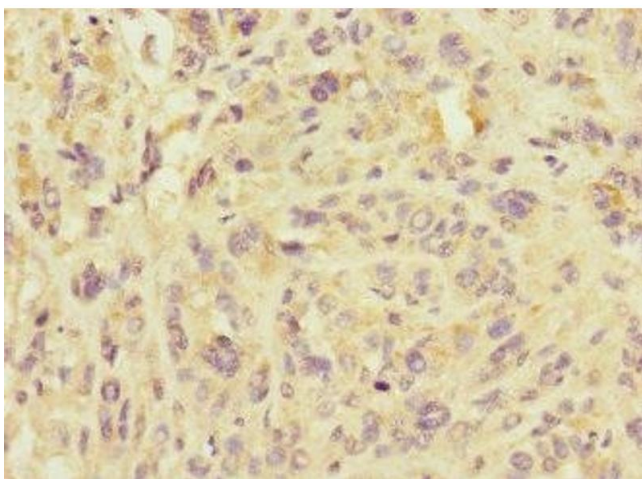
---

Storage Comment: Upon receipt, store at -20°C or -80°C. Avoid repeated freeze.

---

## Images

---



### Immunohistochemistry

**Image 1.** Immunohistochemistry of paraffin-embedded human melanoma using ABIN7159921 at dilution of 1:100