

Datasheet for ABIN7159933
anti-LETM1 antibody (AA 443-543)



[Go to Product page](#)

3 Images

Overview

Quantity:	100 µg
Target:	LETM1
Binding Specificity:	AA 443-543
Reactivity:	Human
Host:	Rabbit
Clonality:	Polyclonal
Conjugate:	This LETM1 antibody is un-conjugated
Application:	Western Blotting (WB), ELISA, Immunohistochemistry (IHC), Immunofluorescence (IF)

Product Details

Immunogen:	Recombinant Human Mitochondrial proton/calcium exchanger protein (443-543AA)
Isotype:	IgG
Cross-Reactivity:	Human, Mouse
Purification:	>95%, Protein G purified

Target Details

Target:	LETM1
Alternative Name:	LETM1 (LETM1 Products)
Background:	Background: Mitochondrial proton/calcium antiporter that mediates proton-dependent calcium efflux from mitochondrion (PubMed:19797662). Crucial for the maintenance of mitochondrial

Target Details

tubular networks and for the assembly of the supercomplexes of the respiratory chain (PubMed:18628306). Required for the maintenance of the tubular shape and cristae organization (PubMed:18628306). In contrast to SLC8B1/NCLX, does not constitute the major factor for mitochondrial calcium extrusion (PubMed:24898248).

Aliases: LETM 1 antibody, LETM1 and EF hand domain containing protein 1, mitochondrial antibody, LETM1 and EF-hand domain-containing protein 1 antibody, Letm1 antibody, LETM1_HUMAN antibody, Leucine zipper EF hand containing transmembrane protein 1 antibody, Leucine zipper-EF-hand-containing transmembrane protein 1 antibody, Mdm38 homolog antibody, mitochondrial antibody

UniProt: [O95202](#)

Application Details

Application Notes: Recommended dilution: WB:1:500-1:5000, IHC:1:200-1:500, IF:1:50-1:200,

Restrictions: For Research Use only

Handling

Format: Liquid

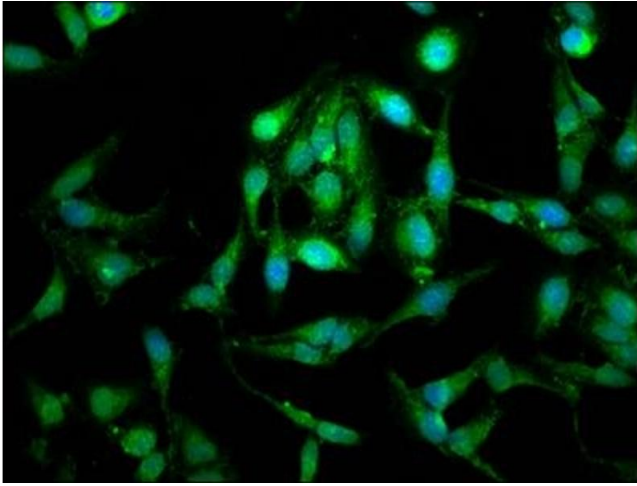
Buffer: Preservative: 0.03 % Proclin 300
Constituents: 50 % Glycerol, 0.01M PBS, pH 7.4

Preservative: ProClin

Precaution of Use: This product contains ProClin: a POISONOUS AND HAZARDOUS SUBSTANCE which should be handled by trained staff only.

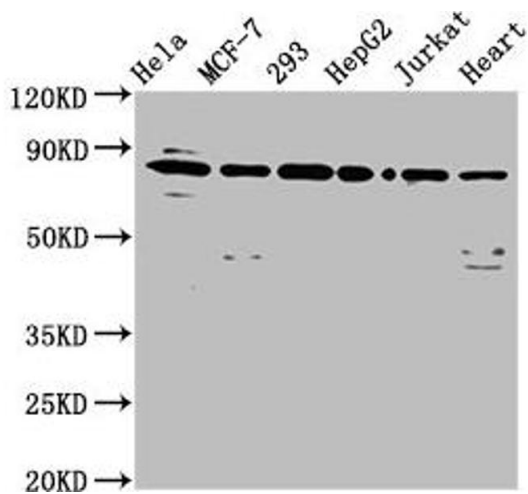
Storage: -20 °C,-80 °C

Storage Comment: Upon receipt, store at -20°C or -80°C. Avoid repeated freeze.



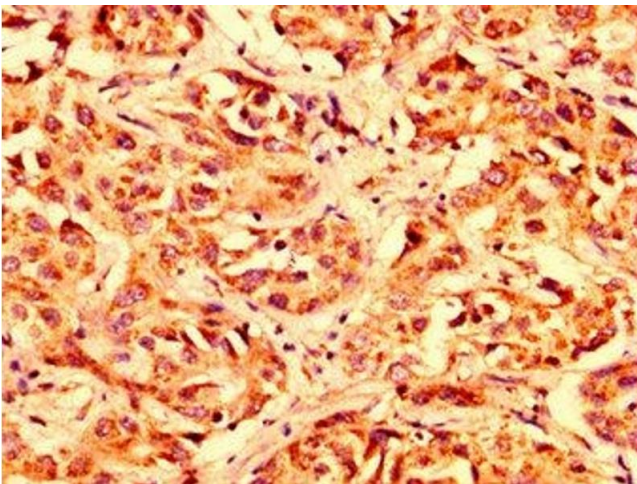
Immunofluorescence

Image 1. Immunofluorescence staining of HeLa cells with ABIN7159933 at 1:100, counter-stained with DAPI. The cells were fixed in 4% formaldehyde, permeabilized using 0.2% Triton X-100 and blocked in 10% normal Goat Serum. The cells were then incubated with the antibody overnight at 4°C. The secondary antibody was Alexa Fluor 488-conjugated AffiniPure Goat Anti-Rabbit IgG(H+L).



Western Blotting

Image 2. Western Blot Positive WB detected in: HeLa whole cell lysate, MCF-7 whole cell lysate, 293 whole cell lysate, HepG2 whole cell lysate, Jurkat whole cell lysate, Mouse heart tissue All lanes: LETM1 antibody at 6.5 µg/mL Secondary Goat polyclonal to rabbit IgG at 1/50000 dilution Predicted band size: 84, 30, 34 kDa Observed band size: 84 kDa



Immunohistochemistry

Image 3. IHC image of ABIN7159933 diluted at 1:300 and staining in paraffin-embedded human liver cancer performed on a Leica Bond™ system. After dewaxing and hydration, antigen retrieval was mediated by high pressure in a citrate buffer (pH 6.0). Section was blocked with 10% normal goat serum 30min at RT. Then primary antibody (1% BSA) was incubated at 4°C overnight. The primary is detected by a biotinylated secondary antibody and visualized using an HRP conjugated SP system.