



[Go to Product page](#)

Datasheet for ABIN7159998
anti-MAPK15 antibody (AA 1-95)

2 Images

Overview

Quantity:	100 µL
Target:	MAPK15
Binding Specificity:	AA 1-95
Reactivity:	Human
Host:	Rabbit
Clonality:	Polyclonal
Conjugate:	This MAPK15 antibody is un-conjugated
Application:	Western Blotting (WB), ELISA, Immunohistochemistry (IHC)

Product Details

Immunogen:	Recombinant Human Mitogen-activated protein kinase 15 protein (1-95AA)
Isotype:	IgG
Cross-Reactivity:	Human
Purification:	Antigen Affinity Purified

Target Details

Target:	MAPK15
Alternative Name:	MAPK15 (MAPK15 Products)
Background:	Background: In vitro, phosphorylates MBP. Aliases: ERK-7 antibody, ERK-8 antibody, ERK7 antibody, ERK8 antibody, Extracellular regulated

Target Details

kinase 8 delta antibody, Extracellular signal regulated kinase 8 antibody, Extracellular signal-regulated kinase 7 antibody, Extracellular signal-regulated kinase 8 antibody, MAP kinase 15 antibody, MAPK 15 antibody, Mapk15 antibody, Mitogen activated protein kinase 15 antibody, Mitogen-activated protein kinase 15 antibody, MK15_HUMAN antibody

UniProt: [Q8TD08](#)

Application Details

Application Notes: Recommended dilution: WB:1:500-1:5000, IHC:1:20-1:200,

Restrictions: For Research Use only

Handling

Format: Liquid

Buffer: PBS with 0.02 % sodium azide, 50 % glycerol, pH 7.3.

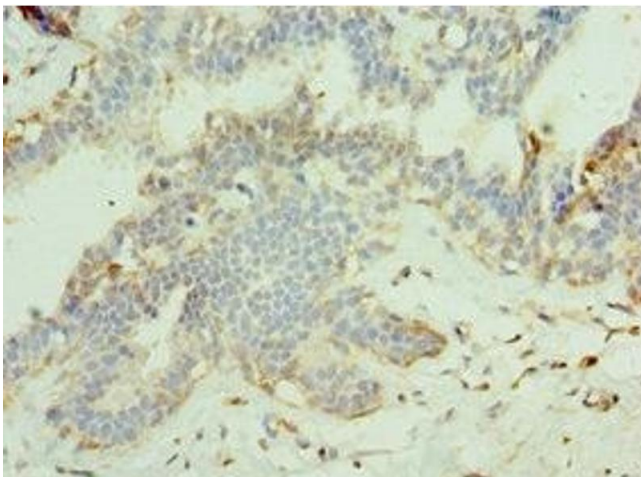
Preservative: Sodium azide

Precaution of Use: This product contains Sodium azide: a POISONOUS AND HAZARDOUS SUBSTANCE which should be handled by trained staff only.

Storage: -20 °C,-80 °C

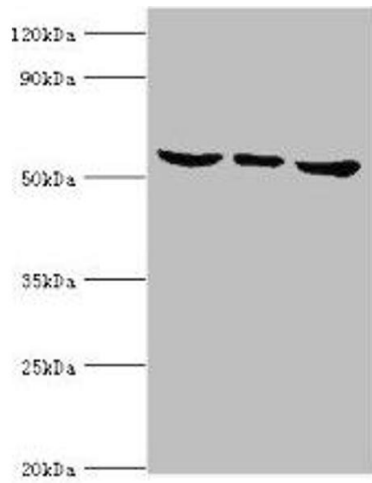
Storage Comment: Upon receipt, store at -20°C or -80°C. Avoid repeated freeze.

Images



Immunohistochemistry

Image 1. Immunohistochemistry of paraffin-embedded human breast cancer using ABIN7159998 at dilution of 1:100



Western Blotting

Image 2. Western blot All lanes: MAPK15 antibody at 6 μ g/mL Lane 1: Hela whole cell lysate Lane 2: MCF-7 whole cell lysate Lane 3: HepG2 whole cell lysate Secondary Goat polyclonal to rabbit IgG at 1/10000 dilution Predicted band size: 60, 29, 32 kDa Observed band size: 60 kDa