



[Go to Product page](#)

Datasheet for ABIN7160008
anti-MAPK7 antibody (AA 1-310)

2 Images

Overview

Quantity:	100 µL
Target:	MAPK7
Binding Specificity:	AA 1-310
Reactivity:	Human
Host:	Rabbit
Clonality:	Polyclonal
Conjugate:	This MAPK7 antibody is un-conjugated
Application:	Immunohistochemistry (IHC), ELISA, Immunofluorescence (IF)

Product Details

Immunogen:	Recombinant Human Mitogen-activated protein kinase 7 protein (1-310AA)
Isotype:	IgG
Cross-Reactivity:	Human
Purification:	Antigen Affinity Purified

Target Details

Target:	MAPK7
Alternative Name:	MAPK7 (MAPK7 Products)
Background:	Background: Plays a role in various cellular processes such as proliferation, differentiation and cell survival. The upstream activator of MAPK7 is the MAPK kinase MAP2K5. Upon activation, it

Target Details

translocates to the nucleus and phosphorylates various downstream targets including MEF2C. EGF activates MAPK7 through a Ras-independent and MAP2K5-dependent pathway. May have a role in muscle cell differentiation. May be important for endothelial function and maintenance of blood vessel integrity. MAP2K5 and MAPK7 interact specifically with one another and not with MEK1/ERK1 or MEK2/ERK2 pathways. Phosphorylates SGK1 at Ser-78 and this is required for growth factor-induced cell cycle progression. Involved in the regulation of p53/TP53 by disrupting the PML-MDM2 interaction.

Aliases: Big MAP kinase 1 antibody, BMK 1 antibody, BMK 1 kinase antibody, BMK-1 antibody, BMK1 antibody, BMK1 Kinase antibody, EC 2.7.11.24 antibody, ERK 4 antibody, ERK 5 antibody, ERK-5 antibody, ERK4 antibody, ERK5 antibody, Extracellular signal regulated kinase 5 antibody, Extracellular signal-regulated kinase 5 antibody, MAP kinase 7 antibody, MAPK 7 antibody, MAPK7 antibody, Mitogen activated protein kinase 7 antibody, Mitogen-activated protein kinase 7 antibody, MK07_HUMAN antibody, OTTHUMP00000065906 antibody, OTTHUMP00000065907 antibody, PRKM 7 antibody, PRKM7 antibody, PROTEIN KINASE, MITOGEN-ACTIVATED, 7 antibody

UniProt: [Q13164](#)

Pathways: [MAPK Signaling](#), [Neurotrophin Signaling Pathway](#), [Activation of Innate immune Response](#), [cAMP Metabolic Process](#), [Toll-Like Receptors Cascades](#), [Negative Regulation of intrinsic apoptotic Signaling](#)

Application Details

Application Notes: Recommended dilution: IHC:1:20-1:200, IF:1:50-1:200,

Restrictions: For Research Use only

Handling

Format: Liquid

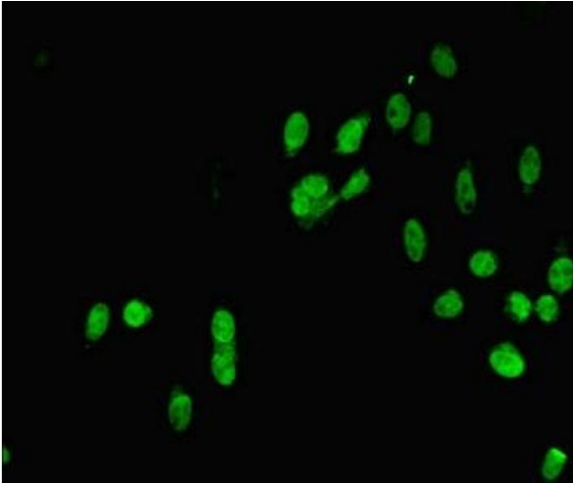
Buffer: PBS with 0.02 % sodium azide, 50 % glycerol, pH 7.3.

Preservative: Sodium azide

Precaution of Use: This product contains Sodium azide: a POISONOUS AND HAZARDOUS SUBSTANCE which should be handled by trained staff only.

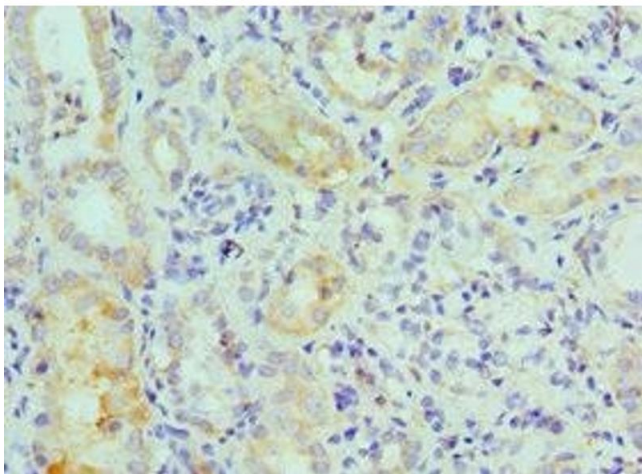
Storage: -20 °C,-80 °C

Storage Comment: Upon receipt, store at -20°C or -80°C. Avoid repeated freeze.



Immunofluorescence

Image 1. Immunofluorescent analysis of HeLa cells using ABIN7160008 at dilution of 1:100 and Alexa Fluor 488-conjugated AffiniPure Goat Anti-Rabbit IgG(H+L)



Immunohistochemistry

Image 2. Immunohistochemistry of paraffin-embedded human kidney tissue using ABIN7160008 at dilution of 1:100