

Datasheet for ABIN7160033
anti-MAP3K2 antibody (AA 357-619)[Go to Product page](#)

2 Images

Overview

Quantity:	100 µL
Target:	MAP3K2
Binding Specificity:	AA 357-619
Reactivity:	Human
Host:	Rabbit
Clonality:	Polyclonal
Conjugate:	This MAP3K2 antibody is un-conjugated
Application:	ELISA, Immunohistochemistry (IHC)

Product Details

Immunogen:	Recombinant Human Mitogen-activated protein kinase kinase kinase 2 protein (357-619AA)
Isotype:	IgG
Cross-Reactivity:	Human
Purification:	>95%, Protein G purified

Target Details

Target:	MAP3K2
Alternative Name:	MAP3K2 (MAP3K2 Products)
Background:	Background: Component of a protein kinase signal transduction cascade. Regulates the JNK and ERK5 pathways by phosphorylating and activating MAP2K5 and MAP2K7 (By similarity).

Target Details

Plays a role in caveolae kiss-and-run dynamics.

Aliases: M3K2_HUMAN antibody, Map3k2 antibody, MAPK/ERK kinase kinase 2 antibody, MEK kinase 2 antibody, MEKK 2 antibody, MEKK2b antibody, Mitogen activated protein kinase kinase 2 antibody, Mitogen-activated protein kinase kinase kinase 2 antibody

UniProt: [Q9Y2U5](#)

Pathways: [MAPK Signaling](#)

Application Details

Application Notes: Recommended dilution: IHC:1:200-1:500,

Restrictions: For Research Use only

Handling

Format: Liquid

Buffer: Preservative: 0.03 % Proclin 300
Constituents: 50 % Glycerol, 0.01M PBS, pH 7.4

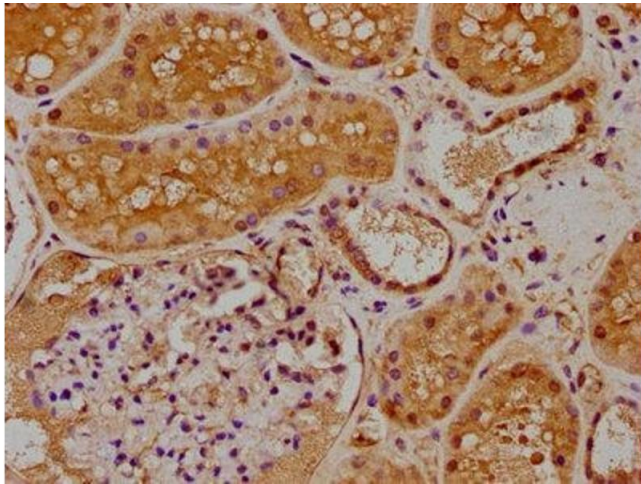
Preservative: ProClin

Precaution of Use: This product contains ProClin: a POISONOUS AND HAZARDOUS SUBSTANCE which should be handled by trained staff only.

Storage: -20 °C,-80 °C

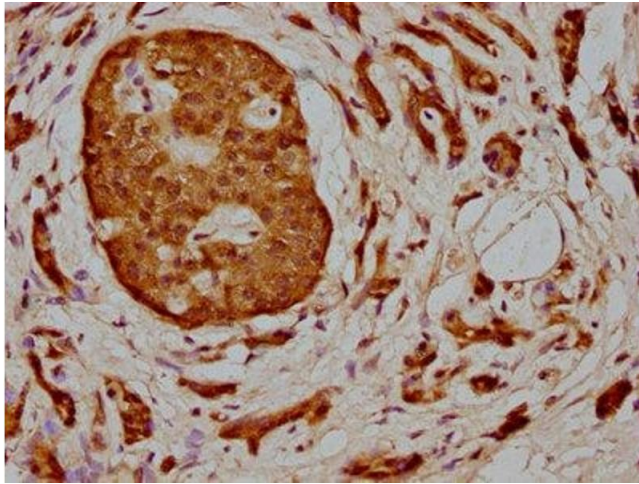
Storage Comment: Upon receipt, store at -20°C or -80°C. Avoid repeated freeze.

Images



Immunohistochemistry

Image 1. IHC image of ABIN7160033 diluted at 1:400 and staining in paraffin-embedded human kidney tissue performed on a Leica Bond™ system. After dewaxing and hydration, antigen retrieval was mediated by high pressure in a citrate buffer (pH 6.0). Section was blocked with 10 % normal goat serum 30 min at RT. Then primary antibody (1 % BSA) was incubated at 4 °C overnight. The primary is detected by a biotinylated secondary antibody and



visualized using an HRP conjugated SP system.

Immunohistochemistry

Image 2. IHC image of ABIN7160033 diluted at 1:400 and staining in paraffin-embedded human pancreatic cancer performed on a Leica BondTM system. After dewaxing and hydration, antigen retrieval was mediated by high pressure in a citrate buffer (pH 6.0). Section was blocked with 10 % normal goat serum 30 min at RT. Then primary antibody (1 % BSA) was incubated at 4 °C overnight. The primary is detected by a biotinylated secondary antibody and visualized using an HRP conjugated SP system.