



[Go to Product page](#)

Datasheet for ABIN7160041  
**anti-MAP3K4 antibody (AA 53-145)**

2 Images

Overview

Quantity:	100 µg
Target:	MAP3K4
Binding Specificity:	AA 53-145
Reactivity:	Human
Host:	Rabbit
Clonality:	Polyclonal
Conjugate:	This MAP3K4 antibody is un-conjugated
Application:	ELISA, Immunohistochemistry (IHC)

Product Details

Immunogen:	Recombinant Human Mitogen-activated protein kinase kinase kinase 4 protein (53-145AA)
Isotype:	IgG
Cross-Reactivity:	Human
Purification:	>95%, Protein G purified

Target Details

Target:	MAP3K4
Alternative Name:	MAP3K4 ( <a href="#">MAP3K4 Products</a> )
Background:	Background: Component of a protein kinase signal transduction cascade. Activates the CSBP2, P38 and JNK MAPK pathways, but not the ERK pathway. Specifically phosphorylates and

## Target Details

---

activates MAP2K4 and MAP2K6.

Aliases: dJ473J16.1 (mitogen-activated protein kinase kinase kinase 4) antibody, FLJ42439 antibody, KIAA0213 antibody, M3K4\_HUMAN antibody, MAP three kinase 1 antibody, MAP/ERK kinase kinase 4 antibody, MAP3K4 antibody, MAPK/ERK kinase kinase 4 antibody, MAPKKK4 antibody, MEK kinase 4 antibody, MEKK 4 antibody, MEKK4 antibody, Mitogen-activated protein kinase kinase kinase 4 antibody, MTK1 antibody, predicted protein of HQ0412 antibody, PRO0412 antibody, RP3-473J16.4 antibody, SSK2/SSK22 MAP kinase kinase kinase, yeast, homolog of antibody

---

UniProt: [Q9Y6R4](#)

---

Pathways: [MAPK Signaling](#)

## Application Details

---

Application Notes: Recommended dilution: IHC:1:20-1:200,

---

Restrictions: For Research Use only

## Handling

---

Format: Liquid

---

Buffer: Preservative: 0.03 % Proclin 300  
Constituents: 50 % Glycerol, 0.01M PBS, pH 7.4

---

Preservative: ProClin

---

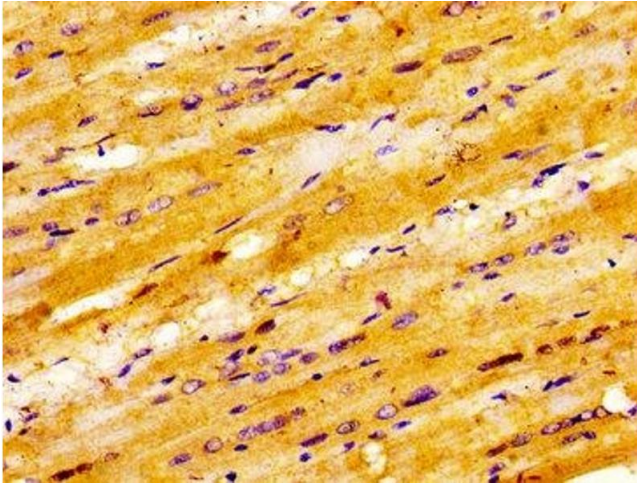
Precaution of Use: This product contains ProClin: a POISONOUS AND HAZARDOUS SUBSTANCE which should be handled by trained staff only.

---

Storage: -20 °C,-80 °C

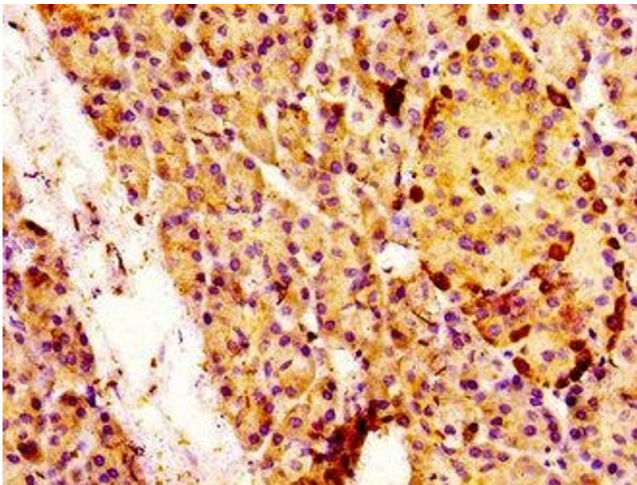
---

Storage Comment: Upon receipt, store at -20°C or -80°C. Avoid repeated freeze.



#### Immunohistochemistry

**Image 1.** IHC image of ABIN7160041 diluted at 1:100 and staining in paraffin-embedded human heart tissue performed on a Leica Bond™ system. After dewaxing and hydration, antigen retrieval was mediated by high pressure in a citrate buffer (pH 6.0). Section was blocked with 10% normal goat serum 30min at RT. Then primary antibody (1% BSA) was incubated at 4°C overnight. The primary is detected by a biotinylated secondary antibody and visualized using an HRP conjugated ABC system.



#### Immunohistochemistry

**Image 2.** IHC image of ABIN7160041 diluted at 1:100 and staining in paraffin-embedded human pancreatic tissue performed on a Leica Bond™ system. After dewaxing and hydration, antigen retrieval was mediated by high pressure in a citrate buffer (pH 6.0). Section was blocked with 10% normal goat serum 30min at RT. Then primary antibody (1% BSA) was incubated at 4°C overnight. The primary is detected by a biotinylated secondary antibody and visualized using an HRP conjugated SP system.