

Datasheet for ABIN7160049
anti-MAP3K6 antibody (AA 905-990)[Go to Product page](#)

2 Images

Overview

Quantity:	100 µg
Target:	MAP3K6
Binding Specificity:	AA 905-990
Reactivity:	Human
Host:	Rabbit
Clonality:	Polyclonal
Conjugate:	This MAP3K6 antibody is un-conjugated
Application:	ELISA, Immunohistochemistry (IHC), Immunofluorescence (IF)

Product Details

Immunogen:	Recombinant Human Mitogen-activated protein kinase kinase kinase 6 protein (905-990AA)
Isotype:	IgG
Cross-Reactivity:	Human
Purification:	>95%, Protein G purified

Target Details

Target:	MAP3K6
Alternative Name:	MAP3K6 (MAP3K6 Products)
Background:	Background: Component of a protein kinase signal transduction cascade. Activates the JNK, but not ERK or p38 kinase pathways.

Target Details

Aliases: Apoptosis signal regulating kinase 2 antibody, Apoptosis signal-regulating kinase 2 antibody, ASK2 antibody, EC 2.7.11.25 antibody, M3K6_HUMAN antibody, MAP3K6 antibody, MAPKKK6 antibody, MEKK6 antibody, MGC125653 antibody, MGC20114 antibody, Mitogen-activated protein kinase kinase kinase 6 antibody

UniProt: [095382](#)

Application Details

Application Notes: Recommended dilution: IHC:1:20-1:200, IF:1:50-1:200,

Restrictions: For Research Use only

Handling

Format: Liquid

Buffer: Preservative: 0.03 % Proclin 300
Constituents: 50 % Glycerol, 0.01M PBS, pH 7.4

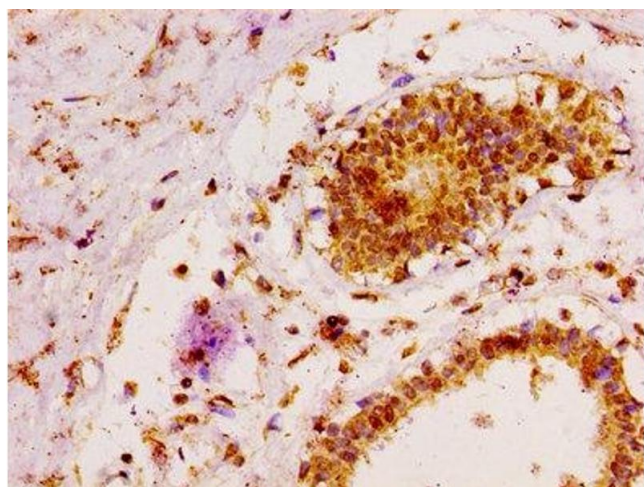
Preservative: ProClin

Precaution of Use: This product contains ProClin: a POISONOUS AND HAZARDOUS SUBSTANCE which should be handled by trained staff only.

Storage: -20 °C,-80 °C

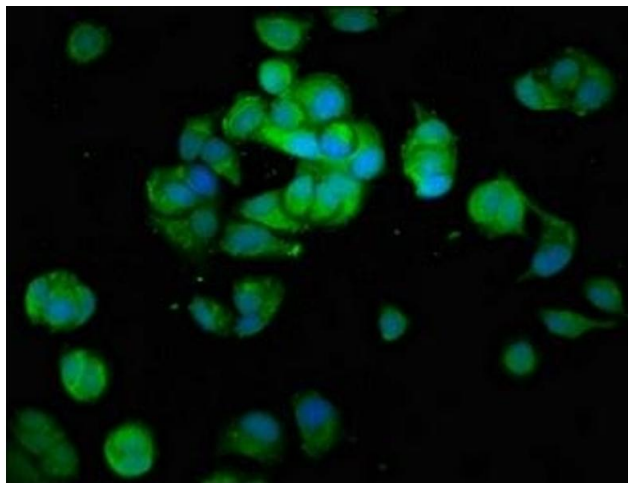
Storage Comment: Upon receipt, store at -20°C or -80°C. Avoid repeated freeze.

Images



Immunohistochemistry

Image 1. IHC image of ABIN7160049 diluted at 1:100 and staining in paraffin-embedded human breast cancer performed on a Leica Bond™ system. After dewaxing and hydration, antigen retrieval was mediated by high pressure in a citrate buffer (pH 6.0). Section was blocked with 10% normal goat serum 30min at RT. Then primary antibody (1% BSA) was incubated at 4°C overnight. The primary is detected by a biotinylated secondary antibody and visualized using an HRP conjugated SP system.



Immunofluorescence

Image 2. Immunofluorescence staining of MCF-7 cells with ABIN7160049 at 1:100, counter-stained with DAPI. The cells were fixed in 4% formaldehyde, permeabilized using 0.2% Triton X-100 and blocked in 10% normal Goat Serum. The cells were then incubated with the antibody overnight at 4°C. The secondary antibody was Alexa Fluor 488-conjugated AffiniPure Goat Anti-Rabbit IgG(H+L).