

Datasheet for ABIN7160057  
**anti-MAP3K8 antibody (AA 1-300)**

## 4 Images

[Go to Product page](#)

## Overview

Quantity:	100 µg
Target:	MAP3K8
Binding Specificity:	AA 1-300
Reactivity:	Human
Host:	Rabbit
Clonality:	Polyclonal
Conjugate:	This MAP3K8 antibody is un-conjugated
Application:	ELISA, Immunohistochemistry (IHC), Immunofluorescence (IF)

## Product Details

Immunogen:	Recombinant Human Mitogen-activated protein kinase kinase kinase 8 protein (1-300AA)
Isotype:	IgG
Cross-Reactivity:	Human
Purification:	>95%, Protein G purified

## Target Details

Target:	MAP3K8
Alternative Name:	MAP3K8 ( <a href="#">MAP3K8 Products</a> )
Background:	Background: Required for lipopolysaccharide (LPS)-induced, TLR4-mediated activation of the MAPK/ERK pathway in macrophages, thus being critical for production of the proinflammatory

## Target Details

cytokine TNF-alpha (TNF) during immune responses. Involved in the regulation of T-helper cell differentiation and IFNG expression in T-cells. Involved in mediating host resistance to bacterial infection through negative regulation of type I interferon (IFN) production. In vitro, activates MAPK/ERK pathway in response to IL1 in an IRAK1-independent manner, leading to up-regulation of IL8 and CCL4. Transduces CD40 and TNFRSF1A signals that activate ERK in B-cells and macrophages, and thus may play a role in the regulation of immunoglobulin production. May also play a role in the transduction of TNF signals that activate JNK and NF-kappa-B in some cell types. In adipocytes, activates MAPK/ERK pathway in an IKBKB-dependent manner in response to IL1B and TNF, but not insulin, leading to induction of lipolysis. Plays a role in the cell cycle. Isoform 1 shows some transforming activity, although it is much weaker than that of the activated oncogenic variant.

Aliases: AURA2 antibody, c COT antibody, Cancer Osaka thyroid oncogene antibody, CCOT antibody, COT antibody, COT proto oncogene serine/threonine protein kinase antibody, EST antibody, ESTF antibody, Ewing sarcoma transformant antibody, FLJ10486 antibody, M3K8\_HUMAN antibody, MAP3K 8 antibody, MAP3K8 antibody, MEKK8 antibody, Mitogen activated protein kinase kinase kinase 8 antibody, Mitogen-activated protein kinase kinase kinase 8 antibody, Proto oncogene cCot antibody, Proto-oncogene c-Cot antibody, Serine/threonine protein kinase cot antibody, Serine/threonine-protein kinase cot antibody, TPL 2 antibody, TPL-2 antibody, TPL2 antibody, Tumor progression locus 2 antibody

UniProt: [P41279](#)

Pathways: [PI3K-Akt Signaling](#), [TCR Signaling](#)

## Application Details

Application Notes: Recommended dilution: IHC:1:20-1:200, IF:1:50-1:200,

Restrictions: For Research Use only

## Handling

Format: Liquid

Buffer: Preservative: 0.03 % Proclin 300  
Constituents: 50 % Glycerol, 0.01M PBS, PH 7.4

Preservative: ProClin

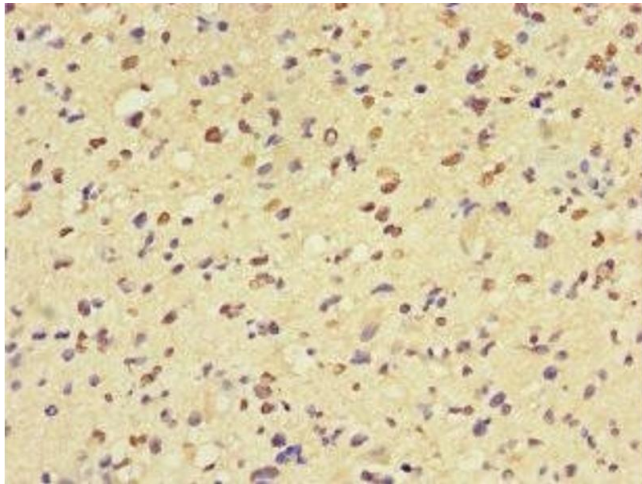
Precaution of Use: This product contains ProClin: a POISONOUS AND HAZARDOUS SUBSTANCE which should be handled by trained staff only.

## Handling

Storage: -20 °C, -80 °C

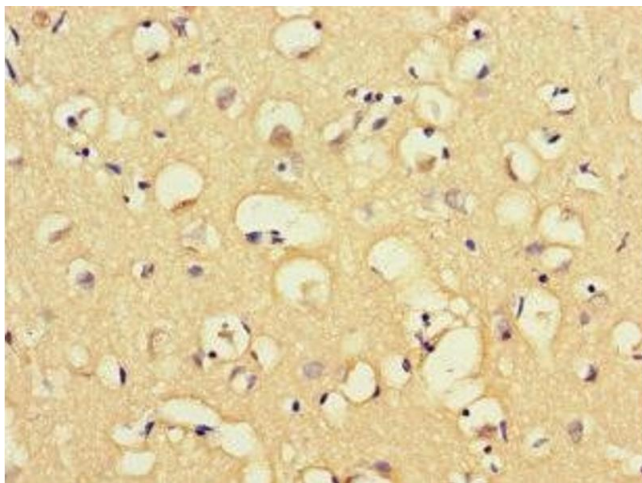
Storage Comment: Upon receipt, store at -20°C or -80°C. Avoid repeated freeze.

## Images



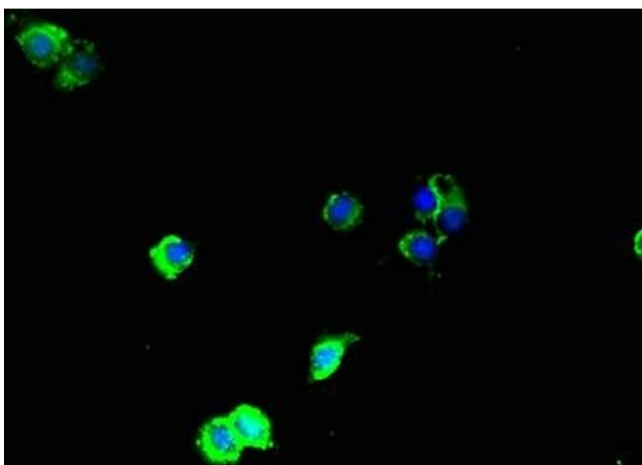
### Immunohistochemistry

**Image 1.** Immunohistochemistry of paraffin-embedded human glioma using ABIN7160057 at dilution of 1:100



### Immunohistochemistry

**Image 2.** Immunohistochemistry of paraffin-embedded human brain tissue using ABIN7160057 at dilution of 1:100



### Immunofluorescence

**Image 3.** Immunofluorescent analysis of HeLa cells using ABIN7160057 at dilution of 1:100 and Alexa Fluor 488-conjugated AffiniPure Goat Anti-Rabbit IgG(H+L)

Please check the [product details page](#) for more images. Overall 4 images are available for ABIN7160057.