



[Go to Product page](#)

Datasheet for ABIN7160070

anti-MAP4K4 antibody (AA 866-1104)

4 Images

Overview

Quantity:	100 µL
Target:	MAP4K4
Binding Specificity:	AA 866-1104
Reactivity:	Human
Host:	Rabbit
Clonality:	Polyclonal
Conjugate:	This MAP4K4 antibody is un-conjugated
Application:	Western Blotting (WB), ELISA, Immunofluorescence (IF), Immunohistochemistry (IHC)

Product Details

Immunogen:	Recombinant Human Mitogen-activated protein kinase kinase kinase 4 protein (866-1104AA)
Isotype:	IgG
Cross-Reactivity:	Human, Mouse
Purification:	Antigen Affinity Purified

Target Details

Target:	MAP4K4
Alternative Name:	MAP4K4 (MAP4K4 Products)
Background:	Background: Serine/threonine kinase that may play a role in the response to environmental

Target Details

stress and cytokines such as TNF-alpha. Appears to act upstream of the JUN N-terminal pathway. Phosphorylates SMAD1 on Thr-322.

Aliases: FLH21957 antibody, FLJ10410 antibody, FLJ20373 antibody, FLJ90111 antibody, Hepatocyte progenitor kinase like/germinal center kinase like kinase antibody, HGK antibody, HPK/GCK like kinase antibody, HPK/GCK like kinase HGK antibody, HPK/GCK-like kinase HGK antibody, KIAA0687 antibody, M4K4_HUMAN antibody, MAP4K4 antibody, MAPK/ERK kinase kinase kinase 4 antibody, MEK kinase kinase 4 antibody, MEKKK 4 antibody, MEKKK4 antibody, Mitogen activated protein kinase kinase kinase kinase 4 antibody, Mitogen-activated protein kinase kinase kinase kinase 4 antibody, Nck interacting kinase antibody, Nck-interacting kinase antibody, NIK antibody

UniProt: [095819](#)

Application Details

Application Notes: Recommended dilution: WB:1:500-1:2000, IHC:1:20-1:200, IF:1:50-1:200,

Restrictions: For Research Use only

Handling

Format: Liquid

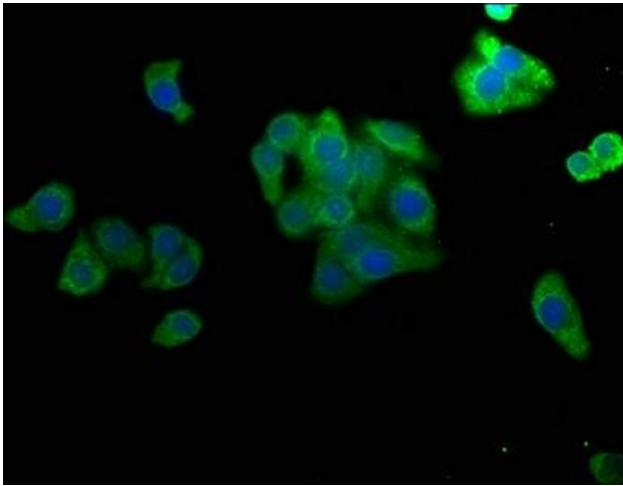
Buffer: Preservative: 0.03 % Proclin 300
Constituents: 50 % Glycerol, 0.01M PBS, pH 7.4

Preservative: ProClin

Precaution of Use: This product contains ProClin: a POISONOUS AND HAZARDOUS SUBSTANCE which should be handled by trained staff only.

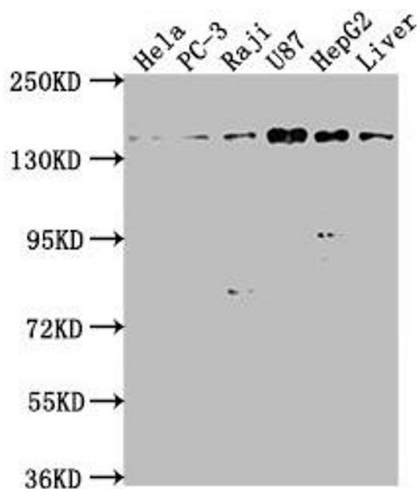
Storage: -20 °C,-80 °C

Storage Comment: Upon receipt, store at -20°C or -80°C. Avoid repeated freeze.



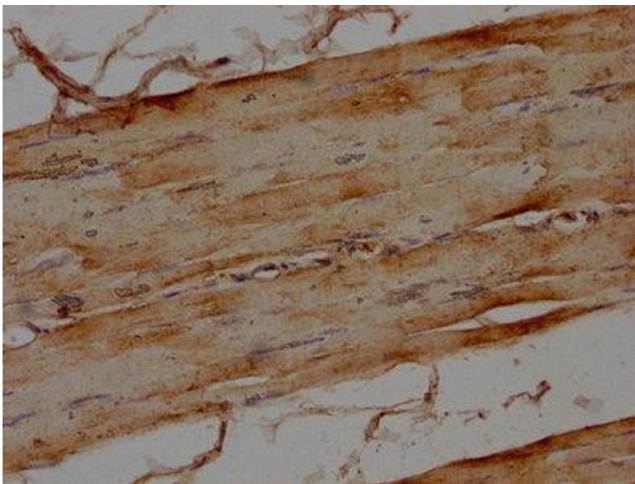
Immunofluorescence

Image 1. Immunofluorescence staining of HepG2 cells with ABIN7160070 at 1:50, counter-stained with DAPI. The cells were fixed in 4 % formaldehyde, permeabilized using 0.2 % Triton X-100 and blocked in 10 % normal Goat Serum. The cells were then incubated with the antibody overnight at 4 °C. The secondary antibody was Alexa Fluor 488-conjugated AffiniPure Goat Anti-Rabbit IgG(H+L).



Western Blotting

Image 2. Western Blot Positive WB detected in: HeLa whole cell lysate, PC-3 whole cell lysate, Raji whole cell lysate, U87 whole cell lysate, HepG2 whole cell lysate, Mouse liver tissue All lanes: MAP4K4 antibody at 1:1000 Secondary Goat polyclonal to rabbit IgG at 1/50000 dilution Predicted band size: 143, 139, 151, 134, 142, 146 kDa Observed band size: 143 kDa



Immunohistochemistry

Image 3. IHC image of ABIN7160070 diluted at 1:100 and staining in paraffin-embedded human skeletal muscle tissue performed on a Leica Bond™ system. After dewaxing and hydration, antigen retrieval was mediated by high pressure in a citrate buffer (pH 6.0). Section was blocked with 10 % normal goat serum 30 min at RT. Then primary antibody (1 % BSA) was incubated at 4 °C overnight. The primary is detected by a biotinylated secondary antibody and visualized using an HRP conjugated SP system.

Please check the [product details page](#) for more images. Overall 4 images are available for ABIN7160070.