

Datasheet for ABIN7160080
anti-BUB1B antibody (AA 230-394)

3 Images

[Go to Product page](#)

Overview

Quantity:	100 µg
Target:	BUB1B
Binding Specificity:	AA 230-394
Reactivity:	Human
Host:	Rabbit
Clonality:	Polyclonal
Conjugate:	This BUB1B antibody is un-conjugated
Application:	Immunohistochemistry (IHC), ELISA, Immunofluorescence (IF), Immunoprecipitation (IP)

Product Details

Immunogen:	Recombinant Human Mitotic checkpoint serine/threonine-protein kinase BUB1 beta protein (230-394AA)
Isotype:	IgG
Cross-Reactivity:	Human
Purification:	>95%, Protein G purified

Target Details

Target:	BUB1B
Alternative Name:	BUB1B (BUB1B Products)
Background:	Background: Essential component of the mitotic checkpoint. Required for normal mitosis

Target Details

progression. The mitotic checkpoint delays anaphase until all chromosomes are properly attached to the mitotic spindle. One of its checkpoint functions is to inhibit the activity of the anaphase-promoting complex/cyclosome (APC/C) by blocking the binding of CDC20 to APC/C, independently of its kinase activity. The other is to monitor kinetochore activities that depend on the kinetochore motor CENPE. Required for kinetochore localization of CENPE. Negatively regulates PLK1 activity in interphase cells and suppresses centrosome amplification. Also implicated in triggering apoptosis in polyploid cells that exit aberrantly from mitotic arrest. May play a role for tumor suppression.

Aliases: Beta homolog of *S. cerevisiae* BUB 1 antibody, Beta homolog of *S. cerevisiae* budding uninhibited by benzimidazoles antibody, BUB 1B antibody, BUB1 budding uninhibited by benzimidazoles 1 homolog beta antibody, Bub1A antibody, BUB1B antibody, BUB1B_HUMAN antibody, BUB1beta antibody, BUBR1 antibody, Budding Uninhibited by Benzimidazoles 1 beta antibody, Budding uninhibited by benzimidazoles 1 homolog beta (yeast) antibody, hBUBR1 antibody, MAD3/BUB1 related protein kinase antibody, MAD3/BUB1-related protein kinase antibody, MAD3L antibody, Mitotic checkpoint gene BUB1B antibody, Mitotic checkpoint kinase MAD3L antibody, Mitotic checkpoint serine/threonine protein kinase BUB1 beta antibody, Mitotic checkpoint serine/threonine-protein kinase BUB1 beta antibody, MVA1 antibody, OTTHUMP00000160319 antibody, Protein SSK1 antibody, SSK 1 antibody, SSK1 antibody

UniProt: [O60566](#)

Application Details

Application Notes: Recommended dilution: IHC:1:20-1:200, IF:1:50-1:500, IP:1:200-1:2000,

Restrictions: For Research Use only

Handling

Format: Liquid

Buffer: Preservative: 0.03 % Proclin 300
Constituents: 50 % Glycerol, 0.01M PBS, PH 7.4

Preservative: ProClin

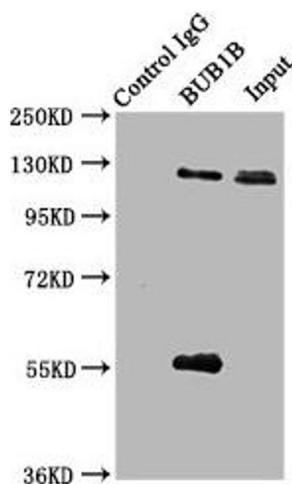
Precaution of Use: This product contains ProClin: a POISONOUS AND HAZARDOUS SUBSTANCE which should be handled by trained staff only.

Storage: -20 °C,-80 °C

Handling

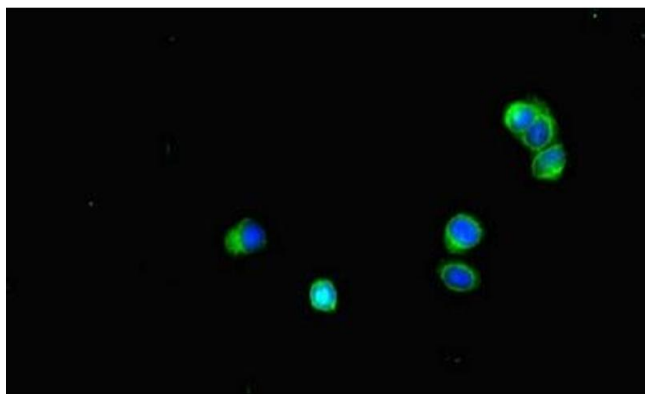
Storage Comment: Upon receipt, store at -20°C or -80°C. Avoid repeated freeze.

Images



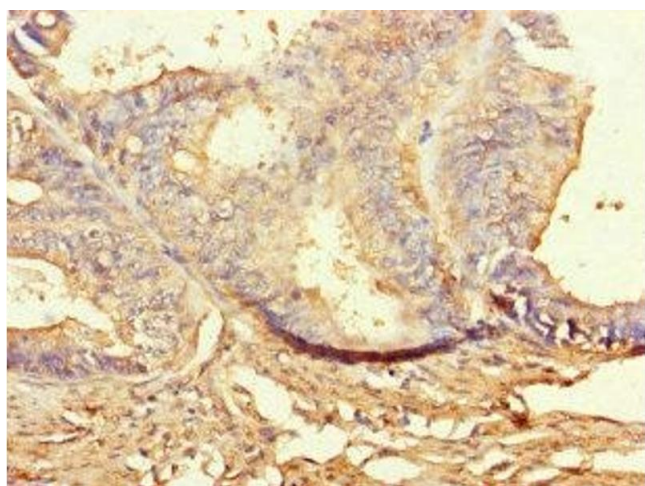
Western Blotting

Image 1. Immunoprecipitating BUB1B in JK whole cell lysate Lane 1: Rabbit control IgG (1 µg) instead of ABIN7160080 in Jurkat whole cell lysate. For western blotting, a HRP-conjugated Protein G antibody was used as the secondary antibody (1/2000) Lane 2: ABIN7160080 (6 µg) + JK whole cell lysate (500 µg) Lane 3: JK whole cell lysate (10 µg)



Immunofluorescence

Image 2. Immunofluorescent analysis of HepG2 cells using ABIN7160080 at dilution of 1:100 and Alexa Fluor 488-conjugated AffiniPure Goat Anti-Rabbit IgG(H+L)



Immunohistochemistry

Image 3. Immunohistochemistry of paraffin-embedded human endometrial cancer using ABIN7160080 at dilution of 1:100