

Datasheet for ABIN7160098  
**anti-FAM96B antibody (AA 1-163)**

## 3 Images

[Go to Product page](#)

## Overview

Quantity:	100 µL
Target:	FAM96B
Binding Specificity:	AA 1-163
Reactivity:	Human
Host:	Rabbit
Clonality:	Polyclonal
Conjugate:	This FAM96B antibody is un-conjugated
Application:	Western Blotting (WB), Immunohistochemistry (IHC), ELISA, Immunoprecipitation (IP)

## Product Details

Immunogen:	Recombinant Human Mitotic spindle-associated MMXD complex subunit MIP18 protein (1-163AA)
Isotype:	IgG
Cross-Reactivity:	Human, Mouse
Purification:	Antigen Affinity Purified

## Target Details

Target:	FAM96B
Alternative Name:	FAM96B ( <a href="#">FAM96B Products</a> )
Background:	Background: Component of the cytosolic iron-sulfur protein assembly (CIA) complex, a

## Target Details

multiprotein complex that mediates the incorporation of iron-sulfur cluster into extramitochondrial Fe/S proteins. As part of the mitotic spindle-associated MMXD complex it plays a role in chromosome segregation, probably by facilitating iron-sulfur cluster assembly into ERCC2/XPD.

Aliases: CGI 128 antibody, FAM96B antibody, Family with sequence similarity 96, member B antibody, HSPC118 antibody, Hypothetical protein LOC51647 antibody, MIP18 antibody, MIP18\_HUMAN antibody, Mitotic spindle-associated MMXD complex subunit MIP18 antibody, MSS19-interacting protein of 18 kDa antibody, Protein FAM96B antibody

UniProt: [Q9Y3D0](#)

## Application Details

Application Notes: Recommended dilution: WB:1:1000-1:5000, IHC:1:20-1:200, IP:1:200-1:2000,

Restrictions: For Research Use only

## Handling

Format: Liquid

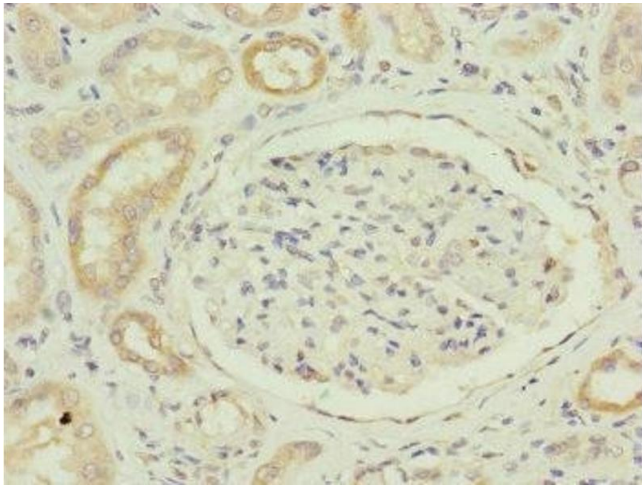
Buffer: PBS with 0.02 % sodium azide, 50 % glycerol, pH 7.3.

Preservative: Sodium azide

Precaution of Use: This product contains Sodium azide: a POISONOUS AND HAZARDOUS SUBSTANCE which should be handled by trained staff only.

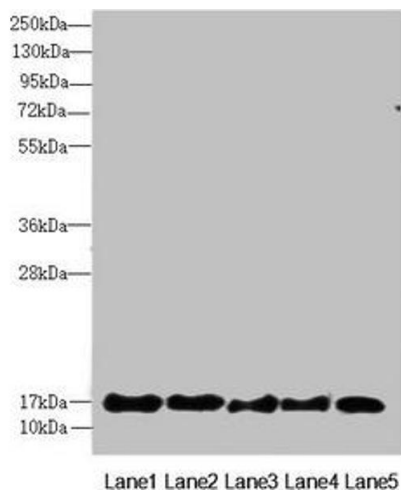
Storage: -20 °C, -80 °C

Storage Comment: Upon receipt, store at -20°C or -80°C. Avoid repeated freeze.



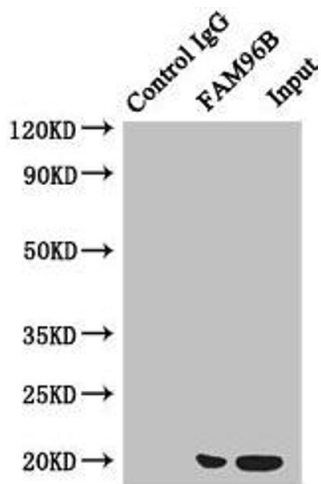
### Immunohistochemistry

**Image 1.** Immunohistochemistry of paraffin-embedded human kidney tissue using ABIN7160098 at dilution of 1:100



### Western Blotting

**Image 2.** Western blot All lanes: FAM96B antibody at 7.23 µg/mL Lane 1: Mouse gonadal tissue Lane 2: MCF-7 whole cell lysate Lane 3: Hela whole cell lysate Lane 4: K562 whole cell lysate Lane 5: A375 whole cell lysate Secondary Goat polyclonal to rabbit IgG at 1/10000 dilution Predicted band size: 18 kDa Observed band size: 18 kDa



### Western Blotting

**Image 3.** Immunoprecipitating FAM96B in HeLa whole cell lysate Lane 1: Rabbit control IgG instead of (1 µg) instead of ABIN7160098 in HeLa whole cell lysate. For western blotting, a HRP-conjugated anti-rabbit IgG, specific to the non-reduced form of IgG was used as the Secondary antibody (1/50000) Lane 2: ABIN7160098 (4 µg) + HeLa whole cell lysate (500 µg) Lane 3: HeLa whole cell lysate (20 µg)