



[Go to Product page](#)

Datasheet for ABIN7160100
anti-MLKL antibody (AA 1-471)

1 Image

Overview

Quantity:	100 µg
Target:	MLKL
Binding Specificity:	AA 1-471
Reactivity:	Human
Host:	Rabbit
Clonality:	Polyclonal
Conjugate:	This MLKL antibody is un-conjugated
Application:	ELISA, Immunohistochemistry (IHC)

Product Details

Immunogen:	Recombinant Human Mixed lineage kinase domain-like protein (1-471AA)
Isotype:	IgG
Cross-Reactivity:	Human
Purification:	>95%, Protein G purified

Target Details

Target:	MLKL
Alternative Name:	MLKL (MLKL Products)
Background:	Background: Pseudokinase that plays a key role in TNF-induced necroptosis, a programmed cell death process. Activated following phosphorylation by RIPK3, leading to homotrimerization,

Target Details

localization to the plasma membrane and execution of programmed necrosis characterized by calcium influx and plasma membrane damage. Does not have protein kinase activity.

Aliases: 9130019I15Rik antibody, FLJ34389 antibody, hMLKL antibody, Mixed lineage kinase domain like antibody, Mixed lineage kinase domain like protein antibody, Mixed lineage kinase domain like pseudokinase antibody, Mixed lineage kinase domain-like protein antibody, Mlkl antibody, MLKL_HUMAN antibody

UniProt: [Q8NB16](#)

Application Details

Application Notes: Recommended dilution: IHC:1:20-1:200,

Restrictions: For Research Use only

Handling

Format: Liquid

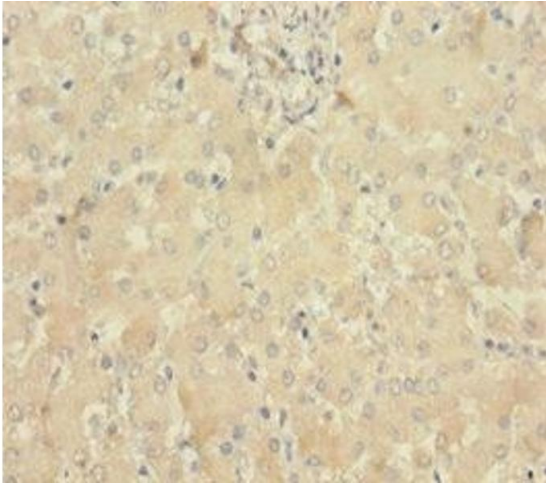
Buffer: Preservative: 0.03 % Proclin 300
Constituents: 50 % Glycerol, 0.01M PBS, PH 7.4

Preservative: ProClin

Precaution of Use: This product contains ProClin: a POISONOUS AND HAZARDOUS SUBSTANCE which should be handled by trained staff only.

Storage: -20 °C,-80 °C

Storage Comment: Upon receipt, store at -20°C or -80°C. Avoid repeated freeze.



Immunohistochemistry

Image 1. Immunohistochemistry of paraffin-embedded human liver tissue using ABIN7160100 at dilution of 1:100