

Datasheet for ABIN7160108
anti-MKL2 antibody (AA 164-313)



[Go to Product page](#)

2 Images

Overview

Quantity:	100 µg
Target:	MKL2
Binding Specificity:	AA 164-313
Reactivity:	Human
Host:	Rabbit
Clonality:	Polyclonal
Conjugate:	This MKL2 antibody is un-conjugated
Application:	Western Blotting (WB), ELISA, Immunohistochemistry (IHC)

Product Details

Immunogen:	Recombinant Human MKL/myocardin-like protein 2 protein (164-313AA)
Isotype:	IgG
Cross-Reactivity:	Human, Mouse
Purification:	>95%, Protein G purified

Target Details

Target:	MKL2
Alternative Name:	MKL2 (MKL2 Products)
Background:	Background: Acts as a transcriptional coactivator of serum response factor (SRF). Required for skeletal myogenic differentiation.

Target Details

Aliases: FLJ31823 antibody, Megakaryoblastic leukemia 2 antibody, megakaryoblastic leukemia 2 protein antibody, MKL/myocardin-like 2 antibody, MKL/myocardin-like protein 2 antibody, Mkl2 antibody, MKL2_HUMAN antibody, MRTF-B antibody, Myocardin-related transcription factor B antibody, NPD001 antibody

UniProt: [Q9ULH7](#)

Application Details

Application Notes: Recommended dilution: WB:1:500-1:5000, IHC:1:500-1:1000,

Restrictions: For Research Use only

Handling

Format: Liquid

Buffer: Preservative: 0.03 % Proclin 300
Constituents: 50 % Glycerol, 0.01M PBS, pH 7.4

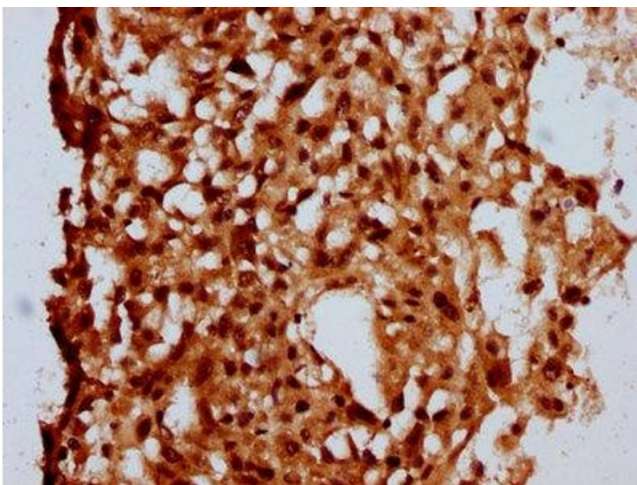
Preservative: ProClin

Precaution of Use: This product contains ProClin: a POISONOUS AND HAZARDOUS SUBSTANCE which should be handled by trained staff only.

Storage: -20 °C,-80 °C

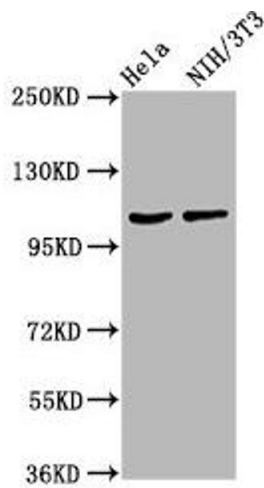
Storage Comment: Upon receipt, store at -20°C or -80°C. Avoid repeated freeze.

Images



Immunohistochemistry

Image 1. IHC image of ABIN7160108 diluted at 1:500 and staining in paraffin-embedded human melanoma performed on a Leica Bond™ system. After dewaxing and hydration, antigen retrieval was mediated by high pressure in a citrate buffer (pH 6.0). Section was blocked with 10 % normal goat serum 30 min at RT. Then primary antibody (1 % BSA) was incubated at 4 °C overnight. The primary is detected by a biotinylated secondary antibody and visualized using an HRP conjugated SP system.



Western Blotting

Image 2. Western Blot Positive WB detected in: HeLa whole cell lysate, NIH/3T3 whole cell lysate All lanes: MKL2 antibody at 4.2 µg/mL Secondary Goat polyclonal to rabbit IgG at 1/50000 dilution Predicted band size: 119, 43, 52, 115, 120 kDa Observed band size: 119 kDa