

Datasheet for ABIN7160116  
**anti-MOB1A antibody (AA 2-216)**

## 5 Images

[Go to Product page](#)

## Overview

Quantity:	100 µg
Target:	MOB1A (MOBKL1B)
Binding Specificity:	AA 2-216
Reactivity:	Human
Host:	Rabbit
Clonality:	Polyclonal
Conjugate:	This MOB1A antibody is un-conjugated
Application:	ELISA, Western Blotting (WB), Immunohistochemistry (IHC), Immunofluorescence (IF), Immunoprecipitation (IP)

## Product Details

Immunogen:	Recombinant Human MOB kinase activator 1A protein (2-216AA)
Isotype:	IgG
Cross-Reactivity:	Human
Purification:	>95%, Protein G purified

## Target Details

Target:	MOB1A (MOBKL1B)
Alternative Name:	MOB1A ( <a href="#">MOBKL1B Products</a> )
Background:	Background: Activator of LATS1/2 in the Hippo signaling pathway which plays a pivotal role in

## Target Details

organ size control and tumor suppression by restricting proliferation and promoting apoptosis. The core of this pathway is composed of a kinase cascade wherein STK3/MST2 and STK4/MST1, in complex with its regulatory protein SAV1, phosphorylates and activates LATS1/2 in complex with its regulatory protein MOB1, which in turn phosphorylates and inactivates YAP1 oncoprotein and WWTR1/TAZ. Phosphorylation of YAP1 by LATS1/2 inhibits its translocation into the nucleus to regulate cellular genes important for cell proliferation, cell death, and cell migration. Stimulates the kinase activity of STK38 and STK38L. Acts cooperatively with STK3/MST2 to activate STK38.

Aliases: B1, Mps One Binder kinase activator like 1B (yeast) antibody, C2orf6 antibody, Chromosome 2 open reading frame 6 antibody, FLJ10788 antibody, FLJ11595 antibody, MATS1 antibody, MOB kinase activator 1A antibody, MOB1 antibody, Mob1 alpha antibody, Mob1 homolog 1B antibody, MOB1 Mps One Binder homolog A antibody, MOB1 Mps One Binder kinase activator like 1B antibody, Mob1A antibody, MOB4B antibody, Mob4B protein antibody, MOBK1B antibody, Mobkl1b antibody, MOL1B\_HUMAN antibody, Mps one binder kinase activator like 1B antibody, Mps one binder kinase activator-like 1B antibody, Protein Mob4B antibody

UniProt: [Q9H8S9](#)

## Application Details

Application Notes: Recommended dilution: WB:1:2000-1:5000, IHC:1:100-1:1000, IF:1:200-1:500, IP1:200-1:2000,

Restrictions: For Research Use only

## Handling

Format: Liquid

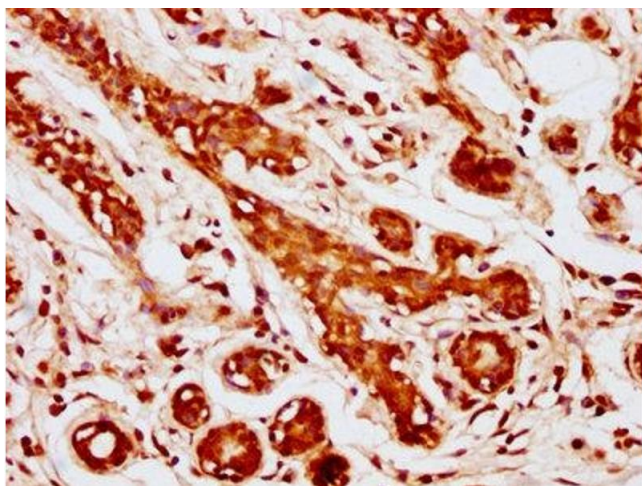
Buffer: Preservative: 0.03 % Proclin 300  
Constituents: 50 % Glycerol, 0.01M PBS, PH 7.4

Preservative: ProClin

Precaution of Use: This product contains ProClin: a POISONOUS AND HAZARDOUS SUBSTANCE which should be handled by trained staff only.

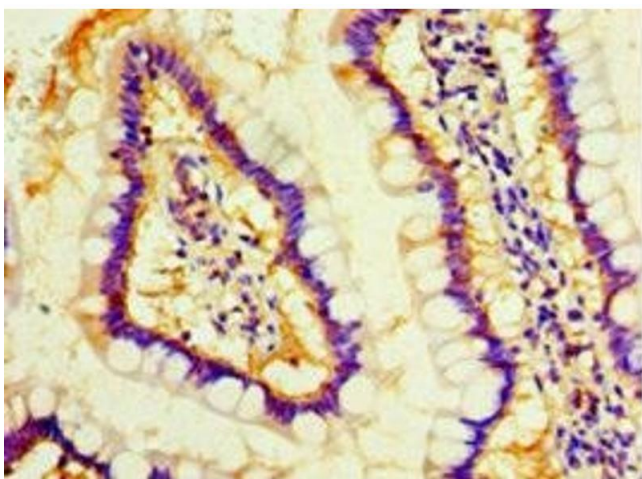
Storage: -20 °C,-80 °C

Storage Comment: Upon receipt, store at -20°C or -80°C. Avoid repeated freeze.



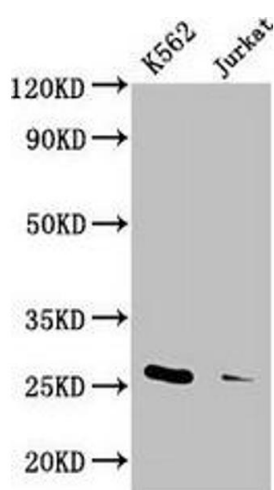
#### Immunohistochemistry

**Image 1.** IHC image of ABIN7160116 diluted at 1:1000 and staining in paraffin-embedded human breast cancer performed on a Leica Bond™ system. After dewaxing and hydration, antigen retrieval was mediated by high pressure in a citrate buffer (pH 6.0). Section was blocked with 10% normal goat serum 30min at RT. Then primary antibody (1% BSA) was incubated at 4°C overnight. The primary is detected by a biotinylated secondary antibody and visualized using an HRP conjugated SP system.



#### Immunohistochemistry

**Image 2.** Immunohistochemistry of paraffin-embedded human small intestine tissue using ABIN7160116 at dilution of 1:100



#### Western Blotting

**Image 3.** Western Blot Positive WB detected in: K562 whole cell lysate, Jurkat whole cell lysate All lanes: MOB1A antibody at 3.3 µg/mL Secondary Goat polyclonal to rabbit IgG at 1/50000 dilution Predicted band size: 26, 17 kDa Observed band size: 26 kDa

Please check the [product details page](#) for more images. Overall 5 images are available for ABIN7160116.