

Datasheet for ABIN7160120
anti-MOBKL1A antibody (AA 2-216)

5 Images

[Go to Product page](#)

Overview

Quantity:	100 µg
Target:	MOBKL1A (MOB1B)
Binding Specificity:	AA 2-216
Reactivity:	Human
Host:	Rabbit
Clonality:	Polyclonal
Application:	ELISA, Immunohistochemistry (IHC), Immunofluorescence (IF), Immunoprecipitation (IP)

Product Details

Immunogen:	Recombinant Human MOB kinase activator 1B protein (2-216AA)
Isotype:	IgG
Cross-Reactivity:	Human
Purification:	>95%, Protein G purified

Target Details

Target:	MOBKL1A (MOB1B)
Alternative Name:	MOB1B (MOB1B Products)
Background:	<p>Background: Activator of LATS1/2 in the Hippo signaling pathway which plays a pivotal role in organ size control and tumor suppression by restricting proliferation and promoting apoptosis.</p> <p>The core of this pathway is composed of a kinase cascade wherein STK3/MST2 and STK4/MST1, in complex with its regulatory protein SAV1, phosphorylates and activates</p>

Target Details

LATS1/2 in complex with its regulatory protein MOB1, which in turn phosphorylates and inactivates YAP1 oncoprotein and WWTR1/TAZ. Phosphorylation of YAP1 by LATS1/2 inhibits its translocation into the nucleus to regulate cellular genes important for cell proliferation, cell death, and cell migration. Stimulates the kinase activity of STK38L.

Aliases: MATS 2 antibody, MATS2 antibody, MGC33910 antibody, Mob 1A antibody, Mob 1B antibody, MOB 4A antibody, MOB kinase activator 1B antibody, Mob1 homolog 1A antibody, MOB1 Mps One Binder homolog B antibody, MOB1 Mps one binder kinase activator like 1A antibody, Mob1A antibody, Mob1B antibody, MOBKL 1A antibody, MOBKL1A antibody, MOL1A_HUMAN antibody, Mps one binder kinase activator like 1A antibody, Mps one binder kinase activator-like 1A antibody, Protein Mob4A antibody

UniProt: [Q7L9L4](#)

Application Details

Application Notes: Recommended dilution: IHC:1:500-1:2000, IF:1:200-1:500, IP:1:200-1:2000,

Restrictions: For Research Use only

Handling

Format: Liquid

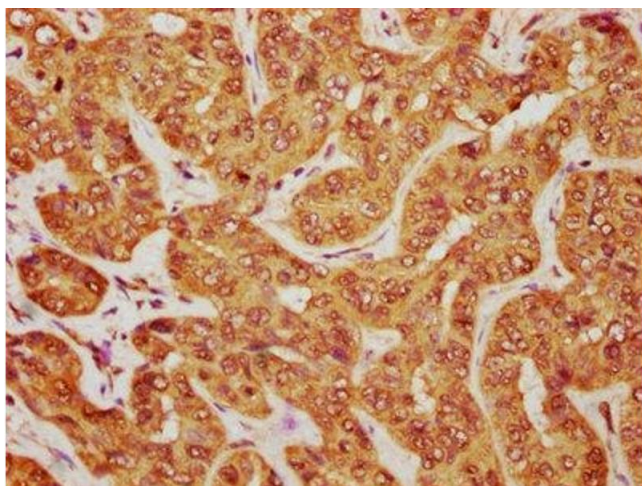
Buffer: Preservative: 0.03 % Proclin 300
Constituents: 50 % Glycerol, 0.01M PBS, PH 7.4

Preservative: ProClin

Precaution of Use: This product contains ProClin: a POISONOUS AND HAZARDOUS SUBSTANCE which should be handled by trained staff only.

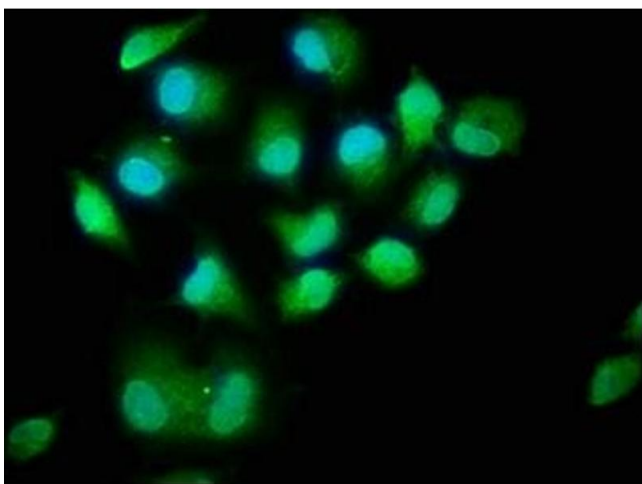
Storage: -20 °C,-80 °C

Storage Comment: Upon receipt, store at -20°C or -80°C. Avoid repeated freeze.



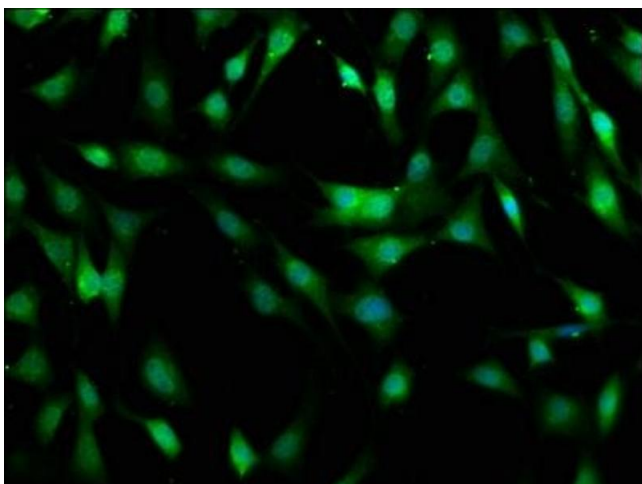
Immunohistochemistry

Image 1. IHC image of ABIN7160120 diluted at 1:1200 and staining in paraffin-embedded human liver cancer performed on a Leica Bond™ system. After dewaxing and hydration, antigen retrieval was mediated by high pressure in a citrate buffer (pH 6.0). Section was blocked with 10% normal goat serum 30min at RT. Then primary antibody (1% BSA) was incubated at 4°C overnight. The primary is detected by a biotinylated secondary antibody and visualized using an HRP conjugated SP system.



Immunofluorescence

Image 2. Immunofluorescence staining of HeLa cells with ABIN7160120 at 1:400, counter-stained with DAPI. The cells were fixed in 4% formaldehyde, permeabilized using 0.2% Triton X-100 and blocked in 10% normal Goat Serum. The cells were then incubated with the antibody overnight at 4°C. The secondary antibody was Alexa Fluor 488-conjugated AffiniPure Goat Anti-Rabbit IgG(H+L).



Immunofluorescence

Image 3. Immunofluorescence staining of NIH/3T3 cells with ABIN7160120 at 1:400, counter-stained with DAPI. The cells were fixed in 4% formaldehyde, permeabilized using 0.2% Triton X-100 and blocked in 10% normal Goat Serum. The cells were then incubated with the antibody overnight at 4°C. The secondary antibody was Alexa Fluor 488-conjugated AffiniPure Goat Anti-Rabbit IgG(H+L).

Please check the [product details page](#) for more images. Overall 5 images are available for ABIN7160120.