

Datasheet for ABIN7160165  
**anti-SLC16A7 antibody (AA 197-279)**[Go to Product page](#)

## 4 Images

## Overview

Quantity:	100 µg
Target:	SLC16A7
Binding Specificity:	AA 197-279
Reactivity:	Human
Host:	Rabbit
Clonality:	Polyclonal
Conjugate:	This SLC16A7 antibody is un-conjugated
Application:	Western Blotting (WB), ELISA, Immunohistochemistry (IHC), Immunofluorescence (IF)

## Product Details

Immunogen:	Recombinant Human Monocarboxylate transporter 2 protein (197-279AA)
Isotype:	IgG
Cross-Reactivity:	Human, Rat
Purification:	>95%, Protein G purified

## Target Details

Target:	SLC16A7
Alternative Name:	SLC16A7 ( <a href="#">SLC16A7 Products</a> )
Background:	Background: Proton-coupled monocarboxylate transporter. Catalyzes the rapid transport across the plasma membrane of many monocarboxylates such as lactate, pyruvate, branched-

## Target Details

chain oxo acids derived from leucine, valine and isoleucine, and the ketone bodies acetoacetate, beta-hydroxybutyrate and acetate. Functions as high-affinity pyruvate transporter.

Aliases: MCT 2 antibody, MCT antibody, Monocarboxylate transporter 2 antibody, MonocarboxylateTransporter 2 antibody, MOT2 antibody, MOT2\_HUMAN antibody, SLC16A7 antibody, Solute carrier family 16 (monocarboxylate transporter), member 7 antibody, Solute carrier family 16 member 7 antibody, Solute carrier Family 16 Monocarboxylic Acid Transporters Member 7 antibody, Solute carrier family 16, member 7 (monocarboxylic acid transporter 2) antibody

UniProt: [O60669](#)

## Application Details

Application Notes: Recommended dilution: WB:1:500-1:5000, IHC:1:20-1:200, IF:1:50-1:200,

Restrictions: For Research Use only

## Handling

Format: Liquid

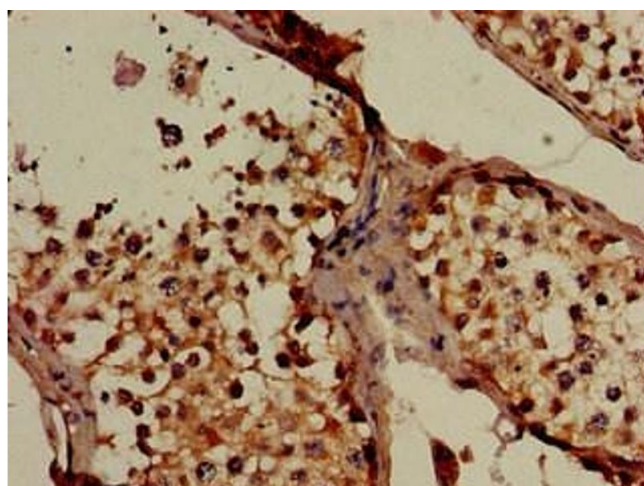
Buffer: Preservative: 0.03 % Proclin 300  
Constituents: 50 % Glycerol, 0.01M PBS, pH 7.4

Preservative: ProClin

Precaution of Use: This product contains ProClin: a POISONOUS AND HAZARDOUS SUBSTANCE which should be handled by trained staff only.

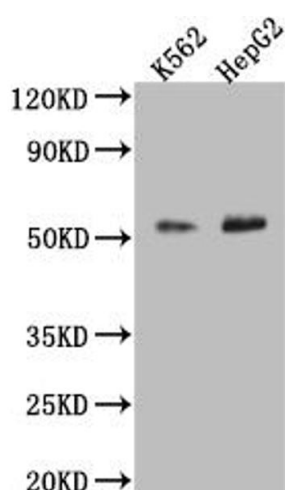
Storage: -20 °C,-80 °C

Storage Comment: Upon receipt, store at -20°C or -80°C. Avoid repeated freeze.



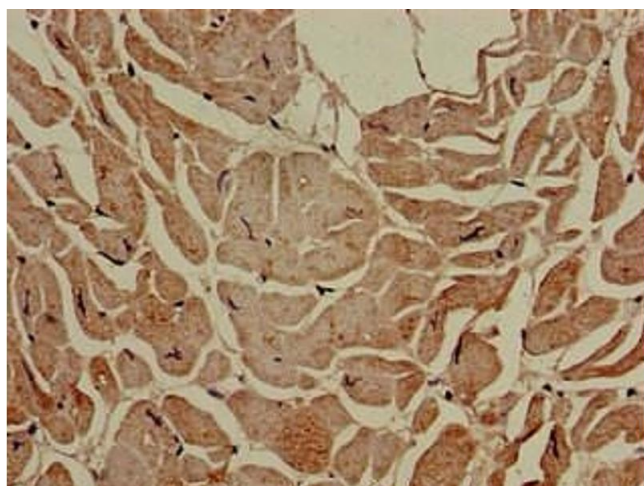
#### Immunohistochemistry

**Image 1.** Immunohistochemistry of paraffin-embedded human testis tissue using ABIN7160165 at dilution of 1:100



#### Western Blotting

**Image 2.** Western Blot Positive WB detected in: A549 whole cell lysate, HepG2 whole cell lysate, HEK293 whole cell lysate, Rat liver tissue All lanes: SLC16A7 antibody at 2.5  $\mu$ g/mL Secondary Goat polyclonal to rabbit IgG at 1/50000 dilution Predicted band size: 53 kDa Observed band size: 53 kDa



#### Immunohistochemistry

**Image 3.** Immunohistochemistry of paraffin-embedded human heart tissue using ABIN7160165 at dilution of 1:100

Please check the [product details page](#) for more images. Overall 4 images are available for ABIN7160165.