



[Go to Product page](#)

Datasheet for ABIN7160173

## anti-SLC16A3 antibody (AA 406-465)

### 2 Images

#### Overview

Quantity:	100 µg
Target:	SLC16A3
Binding Specificity:	AA 406-465
Reactivity:	Human
Host:	Rabbit
Clonality:	Polyclonal
Conjugate:	This SLC16A3 antibody is un-conjugated
Application:	Western Blotting (WB), ELISA, Immunofluorescence (IF)

#### Product Details

Immunogen:	Recombinant Human Monocarboxylate transporter 4 protein (406-465AA)
Isotype:	IgG
Cross-Reactivity:	Human
Purification:	>95%, Protein G purified

#### Target Details

Target:	SLC16A3
Alternative Name:	SLC16A3 ( <a href="#">SLC16A3 Products</a> )
Background:	Background: Proton-linked monocarboxylate transporter. Catalyzes the rapid transport across the plasma membrane of many monocarboxylates such as lactate, pyruvate, branched-chain

## Target Details

---

oxo acids derived from leucine, valine and isoleucine, and the ketone bodies acetoacetate, beta-hydroxybutyrate and acetate (By similarity).

Aliases: MCT 4 antibody, MCT3 antibody, MCT4 antibody, Monocarboxylate transporter 3 antibody, Monocarboxylate transporter 4 antibody, MOT4\_HUMAN antibody, SLC16A3 antibody, Solute carrier family 16 member 3 antibody

---

UniProt: [O15427](#)

---

Pathways: [Warburg Effect](#)

---

## Application Details

---

Application Notes: Recommended dilution: WB:1:500-1:5000, IF:1:50-1:200,

---

Restrictions: For Research Use only

---

## Handling

---

Format: Liquid

---

Buffer: Preservative: 0.03 % Proclin 300  
Constituents: 50 % Glycerol, 0.01M PBS, pH 7.4

---

Preservative: ProClin

---

Precaution of Use: This product contains ProClin: a POISONOUS AND HAZARDOUS SUBSTANCE which should be handled by trained staff only.

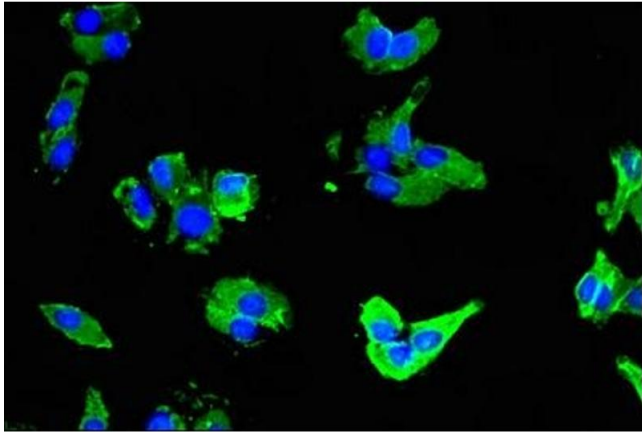
---

Storage: -20 °C,-80 °C

---

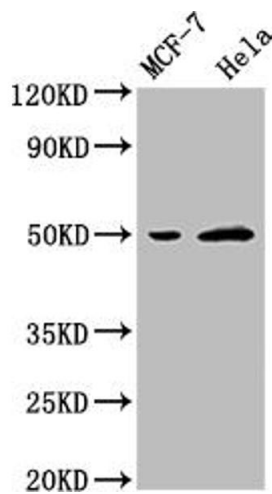
Storage Comment: Upon receipt, store at -20°C or -80°C. Avoid repeated freeze.

---



### Immunofluorescence

**Image 1.** Immunofluorescent analysis of HepG2 cells using ABIN7160173 at dilution of 1:100 and Alexa Fluor 488-conjugated AffiniPure Goat Anti-Rabbit IgG(H+L)



### Western Blotting

**Image 2.** Western Blot Positive WB detected in: MCF-7 whole cell lysate, HeLa whole cell lysate All lanes: SLC16A3 antibody at 1:2500 Secondary Goat polyclonal to rabbit IgG at 1/50000 dilution Predicted band size: 50 kDa Observed band size: 50 kDa