



[Go to Product page](#)

Datasheet for ABIN7160191
anti-MTHFD1L antibody (AA 759-978)

3 Images

Overview

Quantity:	100 µL
Target:	MTHFD1L
Binding Specificity:	AA 759-978
Reactivity:	Human
Host:	Rabbit
Clonality:	Polyclonal
Conjugate:	This MTHFD1L antibody is un-conjugated
Application:	Western Blotting (WB), ELISA, Immunohistochemistry (IHC)

Product Details

Immunogen:	Recombinant Human Monofunctional C1-tetrahydrofolate synthase, mitochondrial protein (759-978AA)
Isotype:	IgG
Cross-Reactivity:	Human
Purification:	Antigen Affinity Purified

Target Details

Target:	MTHFD1L
Alternative Name:	MTHFD1L (MTHFD1L Products)
Background:	Background: May provide the missing metabolic reaction required to link the mitochondria and

Target Details

the cytoplasm in the mammalian model of one-carbon folate metabolism in embryonic an transformed cells complementing thus the enzymatic activities of MTHFD2.

Aliases: 10-formyl-THF synthetase antibody, C1TM_HUMAN antibody, Formyltetrahydrofolate synthetase antibody, formyltetrahydrofolate synthetase domain containing 1 antibody, FTHFSDC1 antibody, methylenetetrahydrofolate dehydrogenase (NADP+ dependent) 1-like antibody, mitochondrial antibody, Monofunctional C1-tetrahydrofolate synthase antibody, MTC1THFS antibody, MTHFD1L antibody, RP1-292B18.2 antibody

UniProt: [Q6UB35](#)

Application Details

Application Notes: Recommended dilution: WB:1:1000-1:5000, IHC:1:20-1:200,

Restrictions: For Research Use only

Handling

Format: Liquid

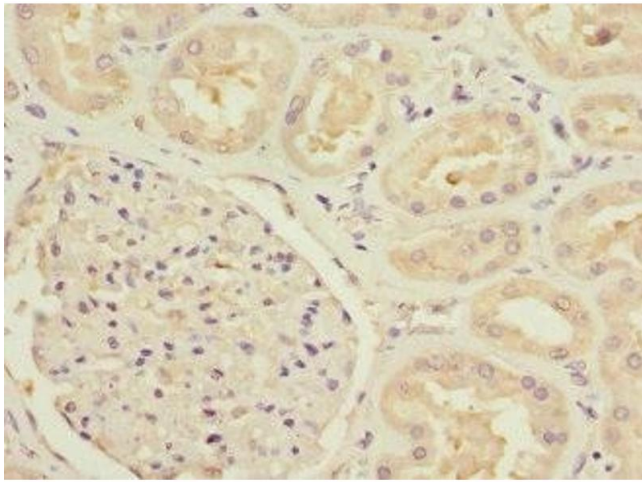
Buffer: PBS with 0.02 % sodium azide, 50 % glycerol, pH 7.3.

Preservative: Sodium azide

Precaution of Use: This product contains Sodium azide: a POISONOUS AND HAZARDOUS SUBSTANCE which should be handled by trained staff only.

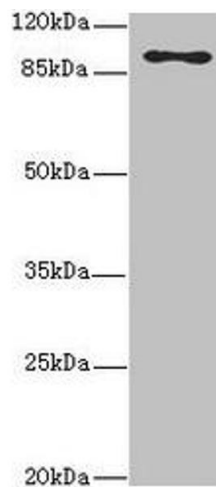
Storage: -20 °C,-80 °C

Storage Comment: Upon receipt, store at -20°C or -80°C. Avoid repeated freeze.



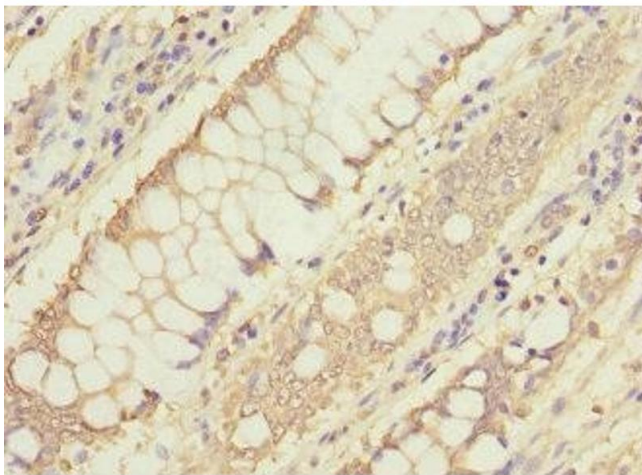
Immunohistochemistry

Image 1. Immunohistochemistry of paraffin-embedded human kidney tissue using ABIN7160191 at dilution of 1:100



Western Blotting

Image 2. Western blot All lanes: MTHFD1L antibody at 3.68 µg/mL + Hela whole cell lysate Secondary Goat polyclonal to rabbit IgG at 1/10000 dilution Predicted band size: 106, 30 kDa Observed band size: 106 kDa



Immunohistochemistry

Image 3. Immunohistochemistry of paraffin-embedded human colon cancer using ABIN7160191 at dilution of 1:100