

Datasheet for ABIN7160220
anti-SMAD1 antibody (AA 150-250)



[Go to Product page](#)

3 Images

Overview

Quantity:	100 µg
Target:	SMAD1
Binding Specificity:	AA 150-250
Reactivity:	Human
Host:	Rabbit
Clonality:	Polyclonal
Conjugate:	This SMAD1 antibody is un-conjugated
Application:	ELISA, Immunohistochemistry (IHC), Immunofluorescence (IF)

Product Details

Immunogen:	Recombinant Human Mothers against decapentaplegic homolog 1 protein (150-250AA)
Isotype:	IgG
Cross-Reactivity:	Human
Purification:	>95%, Protein G purified

Target Details

Target:	SMAD1
Alternative Name:	SMAD1 (SMAD1 Products)
Background:	Background: Transcriptional modulator activated by BMP (bone morphogenetic proteins) type 1 receptor kinase. SMAD1 is a receptor-regulated SMAD (R-SMAD). SMAD1/OAZ1/PSMB4

Target Details

complex mediates the degradation of the CREBBP/EP300 repressor SNIP1. May act synergistically with SMAD4 and YY1 in bone morphogenetic protein (BMP)-mediated cardiac-specific gene expression.

Aliases: BSP-1 antibody, BSP1 antibody, HsMAD1 antibody, JV4-1 antibody, JV41 antibody, MAD homolog 1 antibody, MAD mothers against decapentaplegic homolog 1 antibody, Mad related protein 1 antibody, Mad-related protein 1 antibody, MADH1 antibody, MADR1 antibody, Mothers against decapentaplegic homolog 1 antibody, Mothers against DPP homolog 1 antibody, SMA- AND MAD-RELATED PROTEIN 1 antibody, SMAD 1 antibody, SMAD family member 1 antibody, SMAD mothers against DPP homolog 1 antibody, Smad1 antibody, SMAD1_HUMAN antibody, TGF beta signaling protein 1 antibody, Transforming growth factor-beta-signaling protein 1 antibody

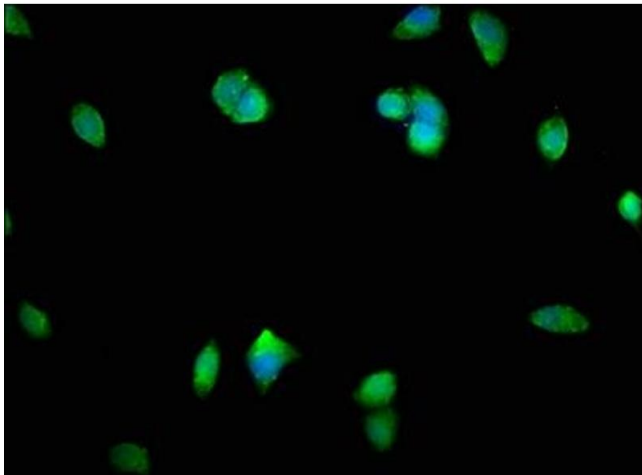
UniProt:	Q15797
Pathways:	Stem Cell Maintenance , Regulation of Muscle Cell Differentiation , Skeletal Muscle Fiber Development

Application Details

Application Notes:	Recommended dilution: IHC:1:20-1:200, IF:1:50-1:500,
Restrictions:	For Research Use only

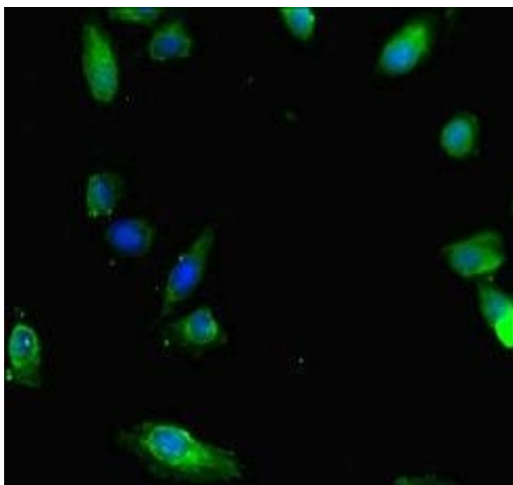
Handling

Format:	Liquid
Buffer:	Preservative: 0.03 % Proclin 300 Constituents: 50 % Glycerol, 0.01M PBS, PH 7.4
Preservative:	ProClin
Precaution of Use:	This product contains ProClin: a POISONOUS AND HAZARDOUS SUBSTANCE which should be handled by trained staff only.
Storage:	-20 °C,-80 °C
Storage Comment:	Upon receipt, store at -20°C or -80°C. Avoid repeated freeze.



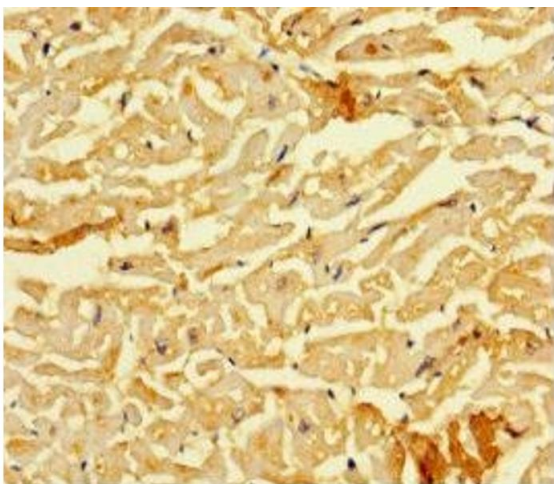
Immunofluorescence

Image 1. Immunofluorescence staining of MCF-7 cells with ABIN7160220 at 1:400, counter-stained with DAPI. The cells were fixed in 4 % formaldehyde, permeabilized using 0.2 % Triton X-100 and blocked in 10 % normal Goat Serum. The cells were then incubated with the antibody overnight at 4 °C. The secondary antibody was Alexa Fluor 488-conjugated AffiniPure Goat Anti-Rabbit IgG(H+L).



Immunofluorescence

Image 2. Immunofluorescent analysis of HeLa cells using ABIN7160220 at dilution of 1:100 and Alexa Fluor 488-conjugated AffiniPure Goat Anti-Rabbit IgG(H+L)



Immunohistochemistry

Image 3. Immunohistochemistry of paraffin-embedded human heart tissue using ABIN7160220 at dilution of 1:100