



[Go to Product page](#)

Datasheet for ABIN7160224  
**anti-SMAD1 antibody (AA 202-335)**

5 Images

Overview

Quantity:	100 µg
Target:	SMAD1
Binding Specificity:	AA 202-335
Reactivity:	Human
Host:	Rabbit
Clonality:	Polyclonal
Conjugate:	This SMAD1 antibody is un-conjugated
Application:	Western Blotting (WB), ELISA, Immunohistochemistry (IHC), Immunofluorescence (IF)

Product Details

Immunogen:	Recombinant Human Mothers against decapentaplegic homolog 1 protein (202-335AA)
Isotype:	IgG
Cross-Reactivity:	Human
Purification:	>95%, Protein G purified

Target Details

Target:	SMAD1
Alternative Name:	SMAD1 ( <a href="#">SMAD1 Products</a> )
Background:	Background: Transcriptional modulator activated by BMP (bone morphogenetic proteins) type 1 receptor kinase. SMAD1 is a receptor-regulated SMAD (R-SMAD). SMAD1/OAZ1/PSMB4

## Target Details

---

complex mediates the degradation of the CREBBP/EP300 repressor SNIP1. May act synergistically with SMAD4 and YY1 in bone morphogenetic protein (BMP)-mediated cardiac-specific gene expression.

Aliases: BSP-1 antibody, BSP1 antibody, HsMAD1 antibody, JV4-1 antibody, JV41 antibody, MAD homolog 1 antibody, MAD mothers against decapentaplegic homolog 1 antibody, Mad related protein 1 antibody, Mad-related protein 1 antibody, MADH1 antibody, MADR1 antibody, Mothers against decapentaplegic homolog 1 antibody, Mothers against DPP homolog 1 antibody, SMA- AND MAD-RELATED PROTEIN 1 antibody, SMAD 1 antibody, SMAD family member 1 antibody, SMAD mothers against DPP homolog 1 antibody, Smad1 antibody, SMAD1\_HUMAN antibody, TGF beta signaling protein 1 antibody, Transforming growth factor-beta-signaling protein 1 antibody

---

UniProt: [Q15797](#)

---

Pathways: [Stem Cell Maintenance](#), [Regulation of Muscle Cell Differentiation](#), [Skeletal Muscle Fiber Development](#)

## Application Details

---

---

Application Notes: Recommended dilution: WB:1:1000-1:5000, IHC:1:100-1:1000, IF:1:200-1:500,

---

Restrictions: For Research Use only

## Handling

---

---

Format: Liquid

---

Buffer: Preservative: 0.03 % Proclin 300  
Constituents: 50 % Glycerol, 0.01M PBS, PH 7.4

---

Preservative: ProClin

---

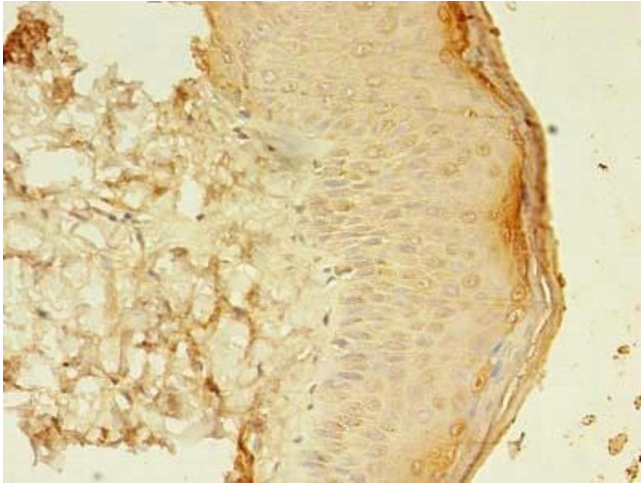
Precaution of Use: This product contains ProClin: a POISONOUS AND HAZARDOUS SUBSTANCE which should be handled by trained staff only.

---

Storage: -20 °C,-80 °C

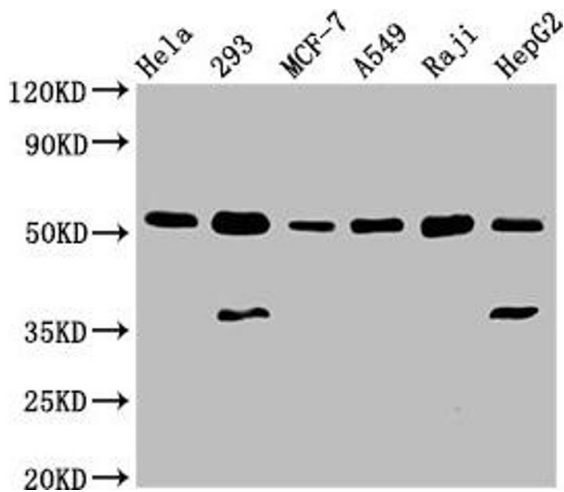
---

Storage Comment: Upon receipt, store at -20°C or -80°C. Avoid repeated freeze.



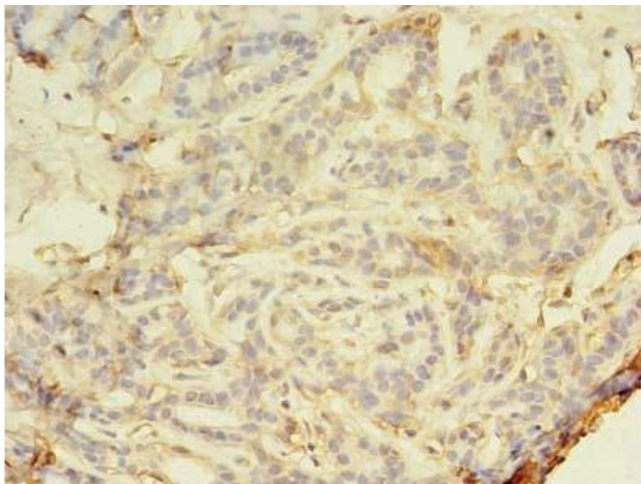
### Immunohistochemistry

**Image 1.** Immunohistochemistry of paraffin-embedded human skin tissue using ABIN7160224 at dilution of 1:100



### Western Blotting

**Image 2.** Western Blot Positive WB detected in: HeLa whole cell lysate, 293 whole cell lysate, MCF-7 whole cell lysate, A549 whole cell lysate, Raji whole cell lysate, HepG2 whole cell lysate All lanes: SMAD1 antibody at 3 µg/mL Secondary Goat polyclonal to rabbit IgG at 1/50000 dilution Predicted band size: 53, 16 kDa Observed band size: 53 kDa



### Immunohistochemistry

**Image 3.** Immunohistochemistry of paraffin-embedded human breast cancer using ABIN7160224 at dilution of 1:100

Please check the [product details page](#) for more images. Overall 5 images are available for ABIN7160224.