



Datasheet for ABIN7160232
anti-SMAD3 antibody (AA 1-230)



[Go to Product page](#)

6 Images

Overview

Quantity:	100 µL
Target:	SMAD3
Binding Specificity:	AA 1-230
Reactivity:	Human
Host:	Rabbit
Clonality:	Polyclonal
Conjugate:	This SMAD3 antibody is un-conjugated
Application:	Western Blotting (WB), ELISA, Immunohistochemistry (IHC), Immunofluorescence (IF), Immunoprecipitation (IP)

Product Details

Immunogen:	Recombinant Human Mothers against decapentaplegic homolog 3 protein (1-230AA)
Isotype:	IgG
Cross-Reactivity:	Human
Purification:	Antigen Affinity Purified

Target Details

Target:	SMAD3
Alternative Name:	SMAD3 (SMAD3 Products)
Background:	Background: Receptor-regulated SMAD (R-SMAD) that is an intracellular signal transducer and

Target Details

transcriptional modulator activated by TGF-beta (transforming growth factor) and activin type 1 receptor kinases. Binds the TRE element in the promoter region of many genes that are regulated by TGF-beta and, on formation of the SMAD3/SMAD4 complex, activates transcription. Also can form a SMAD3/SMAD4/JUN/FOS complex at the AP-1/SMAD site to regulate TGF-beta-mediated transcription. Has an inhibitory effect on wound healing probably by modulating both growth and migration of primary keratinocytes and by altering the TGF-mediated chemotaxis of monocytes. This effect on wound healing appears to be hormone-sensitive. Regulator of chondrogenesis and osteogenesis and inhibits early healing of bone fractures. Positively regulates PDPK1 kinase activity by stimulating its dissociation from the 14-3-3 protein YWHAQ which acts as a negative regulator.

Aliases: DKFZP586N0721 antibody, DKFZp686J10186 antibody, hMAD 3 antibody, hMAD-3 antibody, hSMAD3 antibody, HSPC193 antibody, HST17436 antibody, JV15 2 antibody, JV15-2 antibody, JV152 antibody, LDS1C antibody, LDS3 antibody, MAD (mothers against decapentaplegic Drosophila) homolog 3 antibody, MAD homolog 3 antibody, Mad homolog JV15 2 antibody, Mad protein homolog antibody, MAD, mothers against decapentaplegic homolog 3 antibody, Mad3 antibody, MADH 3 antibody, MADH3 antibody, MGC60396 antibody, Mothers against decapentaplegic homolog 3 antibody, Mothers against DPP homolog 3 antibody, SMA and MAD related protein 3 antibody, SMAD 3 antibody, SMAD antibody, SMAD family member 3 antibody, SMAD, mothers against DPP homolog 3 antibody, Smad3 antibody, SMAD3_HUMAN antibody

UniProt: [P84022](#)

Pathways: [Cell Division Cycle](#), [Chromatin Binding](#), [Cell-Cell Junction Organization](#), [Positive Regulation of Endopeptidase Activity](#), [Autophagy](#)

Application Details

Application Notes: Recommended dilution: WB:1:1000-1:5000, IHC:1:20-1:500, IF:1:50-1:200, IP:1:200-1:2000,

Restrictions: For Research Use only

Handling

Format: Liquid

Buffer: PBS with 0.02 % sodium azide, 50 % glycerol, pH 7.3.

Preservative: Sodium azide

Precaution of Use: This product contains Sodium azide: a POISONOUS AND HAZARDOUS SUBSTANCE which

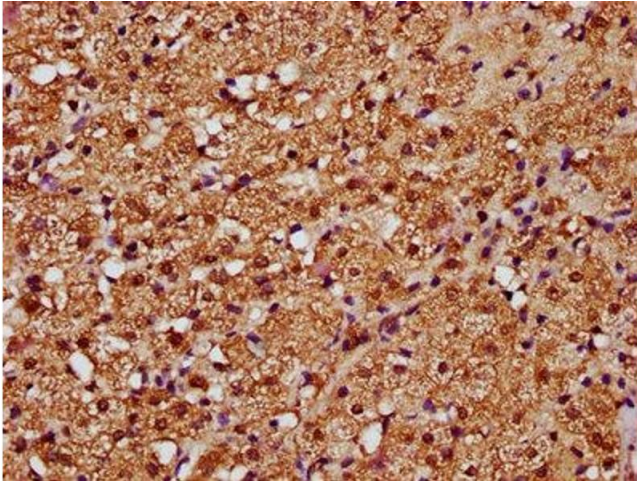
Handling

should be handled by trained staff only.

Storage: -20 °C,-80 °C

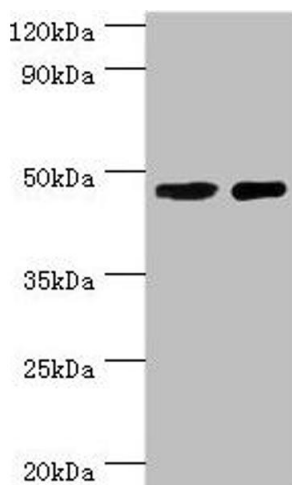
Storage Comment: Upon receipt, store at -20°C or -80°C. Avoid repeated freeze.

Images



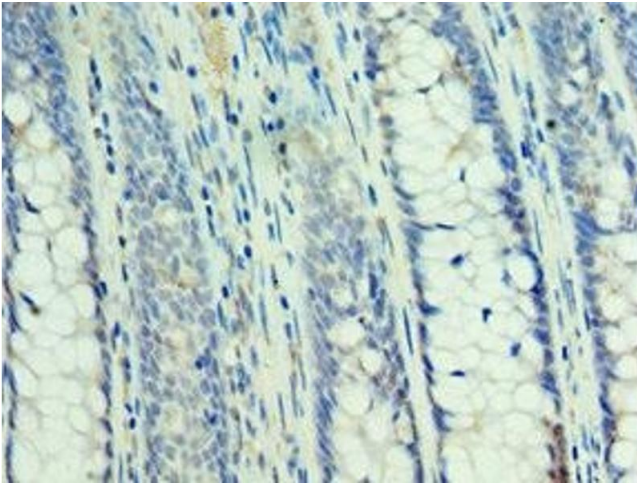
Immunohistochemistry

Image 1. IHC image of ABIN7160232 diluted at 1:388 and staining in paraffin-embedded human adrenal gland tissue performed on a Leica Bond™ system. After dewaxing and hydration, antigen retrieval was mediated by high pressure in a citrate buffer (pH 6.0). Section was blocked with 10 % normal goat serum 30 min at RT. Then primary antibody (1 % BSA) was incubated at 4 °C overnight. The primary is detected by a biotinylated secondary antibody and visualized using an HRP conjugated SP system.



Western Blotting

Image 2. Western blot All lanes: SMAD3 antibody at 8 µg/mL Lane 1: Jurkat whole cell lysate Lane 2: A431 whole cell lysate Secondary Goat polyclonal to rabbit IgG at 1/10000 dilution Predicted band size: 49, 44, 36, 26 kDa Observed band size: 49 kDa



Immunohistochemistry

Image 3. Immunohistochemistry of paraffin-embedded human colon cancer using ABIN7160232 at dilution of 1:100

Please check the [product details page](#) for more images. Overall 6 images are available for ABIN7160232.