



[Go to Product page](#)

Datasheet for ABIN7160246
anti-SMAD7 antibody (AA 36-247)

2 Images

Overview

| | |
|----------------------|---|
| Quantity: | 100 µg |
| Target: | SMAD7 |
| Binding Specificity: | AA 36-247 |
| Reactivity: | Human |
| Host: | Rabbit |
| Clonality: | Polyclonal |
| Conjugate: | This SMAD7 antibody is un-conjugated |
| Application: | Western Blotting (WB), ELISA, Immunofluorescence (IF) |

Product Details

| | |
|-------------------|--|
| Immunogen: | Recombinant Human Mothers against decapentaplegic homolog 7 protein (36-247AA) |
| Isotype: | IgG |
| Cross-Reactivity: | Human |
| Purification: | >95%, Protein G purified |

Target Details

| | |
|-------------------|---|
| Target: | SMAD7 |
| Alternative Name: | SMAD7 (SMAD7 Products) |
| Background: | Background: Antagonist of signaling by TGF-beta (transforming growth factor) type 1 receptor superfamily members, has been shown to inhibit TGF-beta (Transforming growth factor) and |

Target Details

activin signaling by associating with their receptors thus preventing SMAD2 access. Functions as an adapter to recruit SMURF2 to the TGF-beta receptor complex. Also acts by recruiting the PPP1R15A-PP1 complex to TGFBR1, which promotes its dephosphorylation. Positively regulates PDPK1 kinase activity by stimulating its dissociation from the 14-3-3 protein YWHAQ which acts as a negative regulator.

Aliases: CRCS3 antibody, FLJ16482 antibody, hSMAD 7 antibody, hSMAD7 antibody, MAD (mothers against decapentaplegic Drosophila) homolog 7 antibody, MAD antibody, Mad homolog 7 antibody, MAD homolog 8 antibody, MAD mothers against decapentaplegic homolog 7 antibody, MADH 7 antibody, MADH 8 antibody, MADH6 antibody, MADH7 antibody, MADH8 antibody, Mothers Against Decapentaplegic Drosophila Homolog of 6 antibody, Mothers Against Decapentaplegic Drosophila Homolog of 7 antibody, Mothers against decapentaplegic homolog 7 antibody, Mothers against decapentaplegic homolog 8 antibody, Mothers against DPP homolog 7 antibody, Mothers against DPP homolog 8 antibody, SMA-AND MAD-RELATED PROTEIN 7 antibody, SMAD 7 antibody, SMAD antibody, SMAD family member 7 antibody, SMAD, mothers against DPP homolog 7 (Drosophila) antibody, SMAD, mothers against DPP homolog 7 antibody, SMAD6 antibody, Smad7 antibody, SMAD7_HUMAN antibody

UniProt: [O15105](#)

Pathways: [Interferon-gamma Pathway](#), [Cell-Cell Junction Organization](#)

Application Details

Application Notes: Recommended dilution: WB:1:500-1:5000, IF:1:20-1:200,

Restrictions: For Research Use only

Handling

Format: Liquid

Buffer: Preservative: 0.03 % Proclin 300
Constituents: 50 % Glycerol, 0.01M PBS, pH 7.4

Preservative: ProClin

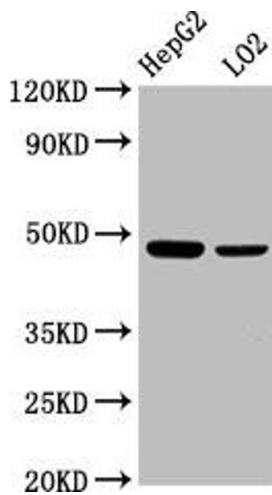
Precaution of Use: This product contains ProClin: a POISONOUS AND HAZARDOUS SUBSTANCE which should be handled by trained staff only.

Storage: -20 °C,-80 °C

Handling

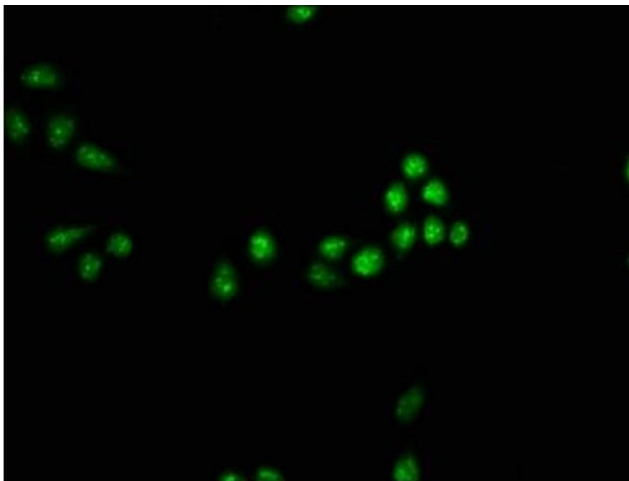
Storage Comment: Upon receipt, store at -20°C or -80°C. Avoid repeated freeze.

Images



Western Blotting

Image 1. Western Blot Positive WB detected in: HepG2 whole cell lysate, LO2 whole cell lysate All lanes: SMAD7 antibody at 2.3 µg/mL Secondary Goat polyclonal to rabbit IgG at 1/50000 dilution Predicted band size: 47, 24 kDa Observed band size: 47 kDa



Immunofluorescence

Image 2. Immunofluorescence staining of HeLa cells with ABIN7160246 at 1:33, counter-stained with DAPI. The cells were fixed in 4% formaldehyde, permeabilized using 0.2% Triton X-100 and blocked in 10% normal Goat Serum. The cells were then incubated with the antibody overnight at 4°C. The secondary antibody was Alexa Fluor 488-conjugated AffiniPure Goat Anti-Rabbit IgG(H+L).