

Datasheet for ABIN7160302  
**anti-AMH antibody (AA 26-560)**[Go to Product page](#)

## 5 Images

## Overview

Quantity:	100 µg
Target:	AMH
Binding Specificity:	AA 26-560
Reactivity:	Human
Host:	Rabbit
Clonality:	Polyclonal
Conjugate:	This AMH antibody is un-conjugated
Application:	Western Blotting (WB), Immunohistochemistry (IHC), ELISA, Immunofluorescence (IF)

## Product Details

Immunogen:	Recombinant Human Muellerian-inhibiting factor protein (26-560AA)
Isotype:	IgG
Cross-Reactivity:	Human
Purification:	>95%, Protein G purified

## Target Details

Target:	AMH
Alternative Name:	AMH ( <a href="#">AMH Products</a> )
Background:	Background: This glycoprotein, produced by the Sertoli cells of the testis, causes regression of the Muellerian duct. It is also able to inhibit the growth of tumors derived from tissues of

## Target Details

Muellerian duct origin.

Aliases: AMH antibody, MIF antibody, Muellerian-inhibiting factor antibody, Anti-Muellerian hormone antibody, AMH antibody, Muellerian-inhibiting substance antibody, MIS antibody

UniProt: [P03971](#)

Pathways: [Negative Regulation of Hormone Secretion](#)

## Application Details

Application Notes: Recommended dilution: WB:1:500-1:5000, IHC:1:100-1:1500, IF:1:50-1:200,

Restrictions: For Research Use only

## Handling

Format: Liquid

Buffer: Preservative: 0.03 % Proclin 300  
Constituents: 50 % Glycerol, 0.01M PBS, PH 7.4

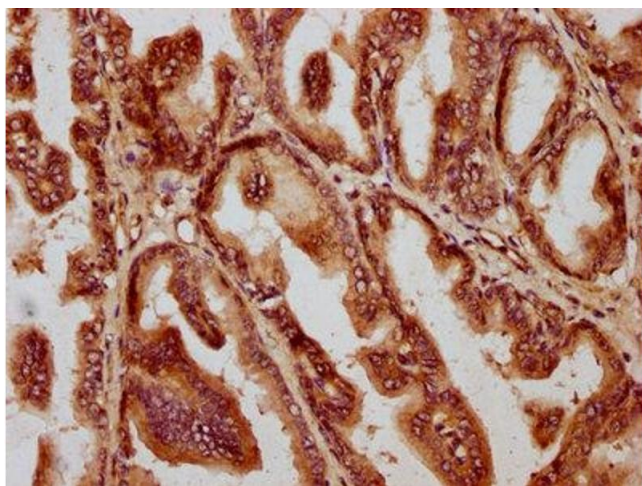
Preservative: ProClin

Precaution of Use: This product contains ProClin: a POISONOUS AND HAZARDOUS SUBSTANCE which should be handled by trained staff only.

Storage: -20 °C,-80 °C

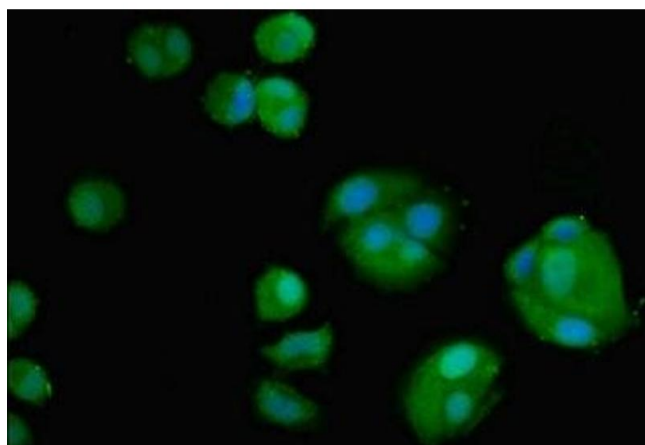
Storage Comment: Upon receipt, store at -20°C or -80°C. Avoid repeated freeze.

## Images



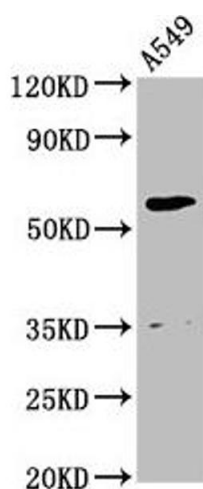
### Immunohistochemistry

**Image 1.** IHC image of ABIN7160302 diluted at 1:1400 and staining in paraffin-embedded human prostate tissue performed on a Leica Bond™ system. After dewaxing and hydration, antigen retrieval was mediated by high pressure in a citrate buffer (pH 6.0). Section was blocked with 10% normal goat serum 30min at RT. Then primary antibody (1% BSA) was incubated at 4°C overnight. The primary is detected by a biotinylated secondary antibody and visualized using an HRP conjugated SP system.



### Immunofluorescence

**Image 2.** Immunofluorescent analysis of MCF-7 cells using ABIN7160302 at dilution of 1:100 and Alexa Fluor 488-conjugated AffiniPure Goat Anti-Rabbit IgG(H+L)



### Western Blotting

**Image 3.** Western Blot Positive WB detected in: A549 whole cell lysate All lanes: AMH antibody at 2.8 µg/mL Secondary Goat polyclonal to rabbit IgG at 1/50000 dilution Predicted band size: 60 kDa Observed band size: 60 kDa

Please check the [product details page](#) for more images. Overall 5 images are available for ABIN7160302.