

Datasheet for ABIN7160331

anti-FAT Atypical Cadherin 2 (FAT2) (AA 123-314) antibody[Go to Product page](#)**3** Images

Overview

Quantity:	100 µg
Target:	FAT Atypical Cadherin 2 (FAT2)
Binding Specificity:	AA 123-314
Reactivity:	Human
Host:	Rabbit
Clonality:	Polyclonal
Conjugate:	Un-conjugated
Application:	Immunofluorescence (IF), Immunohistochemistry (IHC), ELISA

Product Details

Immunogen:	Recombinant Human Multiple epidermal growth factor-like domains protein 10 protein (123-314AA)
Isotype:	IgG
Cross-Reactivity:	Human
Purification:	>95%, Protein G purified

Target Details

Target:	FAT Atypical Cadherin 2 (FAT2)
Alternative Name:	MEGF1 (FAT2 Products)
Background:	Background: Membrane receptor involved in phagocytosis by macrophages of apoptotic cells.

Target Details

Cooperates with ABCA1 within the process of engulfment. Promotes the formation of large intracellular vacuoles and may be responsible for the uptake of amyloid-beta peptides. May also function in the mosaic spacing of specific neuron subtypes in the retina through homotypic retinal neuron repulsion. Mosaics provide a mechanism to distribute each cell type evenly across the retina, ensuring that all parts of the visual field have access to a full set of processing elements. May play role in cell adhesion and motility. Is also an essential factor in the regulation of myogenesis. Controls the balance between skeletal muscle satellite cells proliferation and differentiation probably through regulation of the notch signaling pathway.

Aliases: MEGF10 antibody, KIAA1780Multiple epidermal growth factor-like domains protein 10 antibody, Multiple EGF-like domains protein 10 antibody

UniProt: [Q96KG7](#)

Application Details

Application Notes: Recommended dilution: IHC:1:20-1:200, IF:1:50-1:200,

Restrictions: For Research Use only

Handling

Format: Liquid

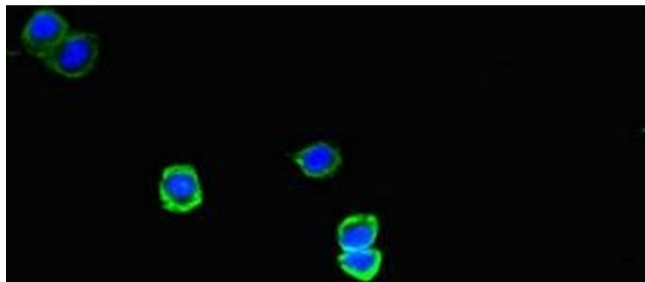
Buffer: Preservative: 0.03 % Proclin 300
Constituents: 50 % Glycerol, 0.01M PBS, PH 7.4

Preservative: ProClin

Precaution of Use: This product contains ProClin: a POISONOUS AND HAZARDOUS SUBSTANCE which should be handled by trained staff only.

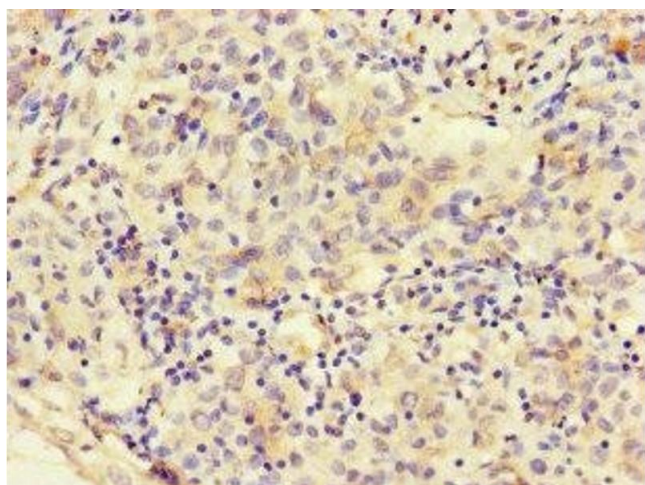
Storage: -20 °C,-80 °C

Storage Comment: Upon receipt, store at -20°C or -80°C. Avoid repeated freeze.



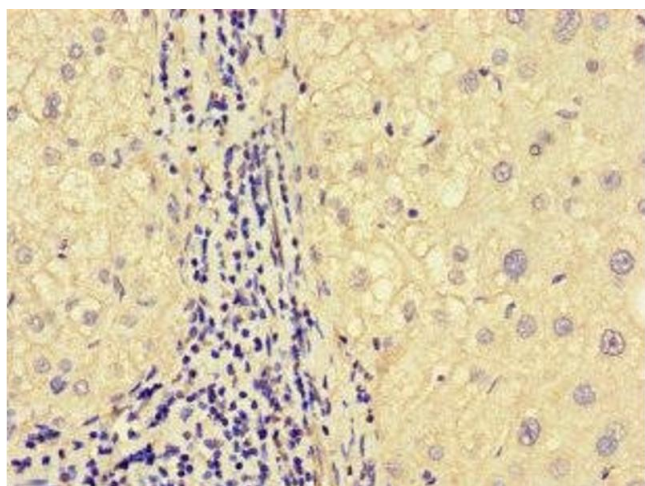
Immunofluorescence

Image 1. Immunofluorescent analysis of HepG2 cells using ABIN7160331 at dilution of 1:100 and Alexa Fluor 488-conjugated AffiniPure Goat Anti-Rabbit IgG(H+L)



Immunohistochemistry

Image 2. Immunohistochemistry of paraffin-embedded human lung cancer using ABIN7160331 at dilution of 1:100



Immunohistochemistry

Image 3. Immunohistochemistry of paraffin-embedded human liver cancer using ABIN7160331 at dilution of 1:100