

Datasheet for ABIN7160335
anti-MEGF8 antibody (AA 495-663)[Go to Product page](#)

2 Images

Overview

Quantity:	100 µg
Target:	MEGF8
Binding Specificity:	AA 495-663
Reactivity:	Human
Host:	Rabbit
Clonality:	Polyclonal
Conjugate:	This MEGF8 antibody is un-conjugated
Application:	ELISA, Immunohistochemistry (IHC), Immunofluorescence (IF)

Product Details

Immunogen:	Recombinant Human Multiple epidermal growth factor-like domains protein 8 protein (495-663AA)
Isotype:	IgG
Cross-Reactivity:	Human
Purification:	>95%, Protein G purified

Target Details

Target:	MEGF8
Alternative Name:	MEGF8 (MEGF8 Products)
Background:	Background: extracellular exosome, nucleus, BMP signaling pathway, cell migration involved in

Target Details

gastrulation, craniofacial suture morphogenesis, determination of digestive tract left/right asymmetry, determination of heart left/right asymmetry, embryonic heart tube left/right pattern formation, embryonic heart tube morphogenesis, embryonic limb morphogenesis
Aliases: MEGF8 antibody, C19orf49 antibody, EGFL4 antibody, KIAA0817 antibody, Multiple epidermal growth factor-like domains protein 8 antibody, Multiple EGF-like domains protein 8 antibody, Epidermal growth factor-like protein 4 antibody, EGF-like protein 4 antibody

UniProt: [Q7Z7M0](#)

Application Details

Application Notes: Recommended dilution: IHC:1:200-1:500, IF:1:50-1:200,

Restrictions: For Research Use only

Handling

Format: Liquid

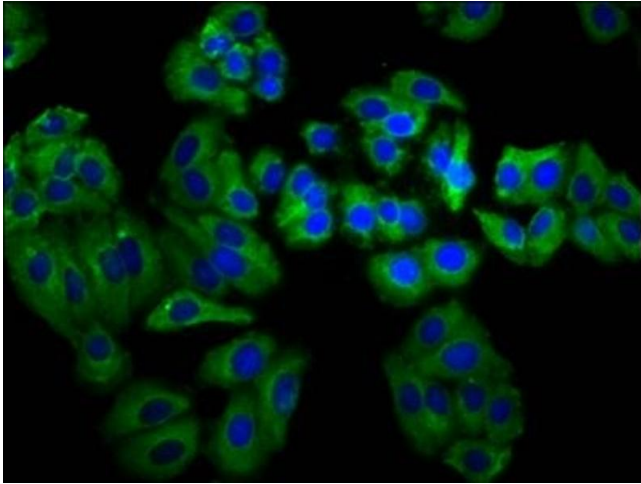
Buffer: Preservative: 0.03 % Proclin 300
Constituents: 50 % Glycerol, 0.01M PBS, pH 7.4

Preservative: ProClin

Precaution of Use: This product contains ProClin: a POISONOUS AND HAZARDOUS SUBSTANCE which should be handled by trained staff only.

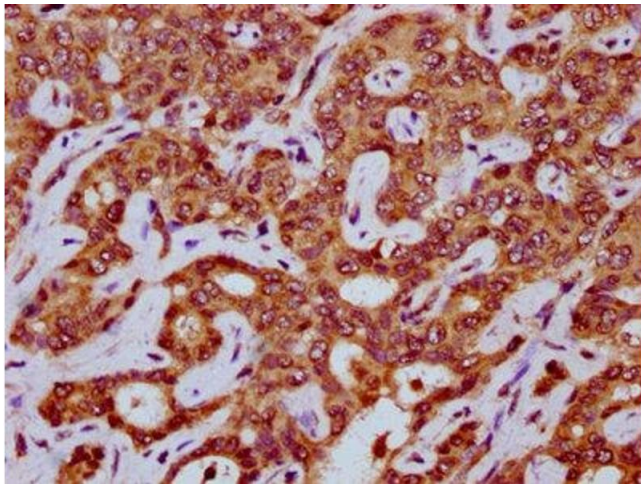
Storage: -20 °C, -80 °C

Storage Comment: Upon receipt, store at -20°C or -80°C. Avoid repeated freeze.



Immunofluorescence

Image 1. Immunofluorescence staining of HepG2 cells with ABIN7160335 at 1:66, counter-stained with DAPI. The cells were fixed in 4% formaldehyde, permeabilized using 0.2% Triton X-100 and blocked in 10% normal Goat Serum. The cells were then incubated with the antibody overnight at 4°C. The secondary antibody was Alexa Fluor 488-conjugated AffiniPure Goat Anti-Rabbit IgG(H+L).



Immunohistochemistry

Image 2. IHC image of ABIN7160335 diluted at 1:200 and staining in paraffin-embedded human liver cancer performed on a Leica Bond™ system. After dewaxing and hydration, antigen retrieval was mediated by high pressure in a citrate buffer (pH 6.0). Section was blocked with 10% normal goat serum 30min at RT. Then primary antibody (1% BSA) was incubated at 4°C overnight. The primary is detected by a biotinylated secondary antibody and visualized using an HRP conjugated SP system.