

Datasheet for ABIN7160361  
**anti-MBNL3 antibody (AA 116-211)**[Go to Product page](#)

## 2 Images

## Overview

Quantity:	100 µg
Target:	MBNL3
Binding Specificity:	AA 116-211
Reactivity:	Human
Host:	Rabbit
Clonality:	Polyclonal
Conjugate:	This MBNL3 antibody is un-conjugated
Application:	ELISA, Immunohistochemistry (IHC), Immunofluorescence (IF)

## Product Details

Immunogen:	Recombinant Human Muscleblind-like protein 3 protein (116-211AA)
Isotype:	IgG
Cross-Reactivity:	Human
Purification:	>95%, Protein G purified

## Target Details

Target:	MBNL3
Alternative Name:	MBNL3 ( <a href="#">MBNL3 Products</a> )
Background:	Background: Mediates pre-mRNA alternative splicing regulation. Acts either as activator or repressor of splicing on specific pre-mRNA targets. Inhibits cardiac troponin-T (TNNT2) pre-

## Target Details

mRNA exon inclusion but induces insulin receptor (IR) pre-mRNA exon inclusion in muscle. Antagonizes the alternative splicing activity pattern of CELF proteins. May play a role in myotonic dystrophy pathophysiology (DM). Could inhibit terminal muscle differentiation, acting at approximately the time of myogenin induction.

Aliases: A530038J18Rik antibody, A1661274 antibody, CHCR antibody, Cys3His CCG1 required protein antibody, Cys3His CCG1-required protein antibody, E430034C16Rik antibody, MBLX antibody, MBLX39 antibody, MBNL 3 antibody, Mbnl3 antibody, MBNL3\_HUMAN antibody, MBXL antibody, Muscleblind like 3 antibody, Muscleblind like protein 3 antibody, Muscleblind like splicing regulator 3 antibody, Muscleblind like X linked protein antibody, Muscleblind-like protein 3 antibody, Muscleblind-like X-linked protein antibody, OTTMUSP00000019072 antibody, OTTMUSP00000019073 antibody, OTTMUSP00000019074 antibody, Protein HCHCR antibody, RP23-98P13.1 antibody

UniProt: [Q9NUK0](#)

Pathways: [Regulation of Muscle Cell Differentiation, Skeletal Muscle Fiber Development](#)

## Application Details

Application Notes: Recommended dilution: IHC:1:200-1:500, IF:1:50-1:200,

Restrictions: For Research Use only

## Handling

Format: Liquid

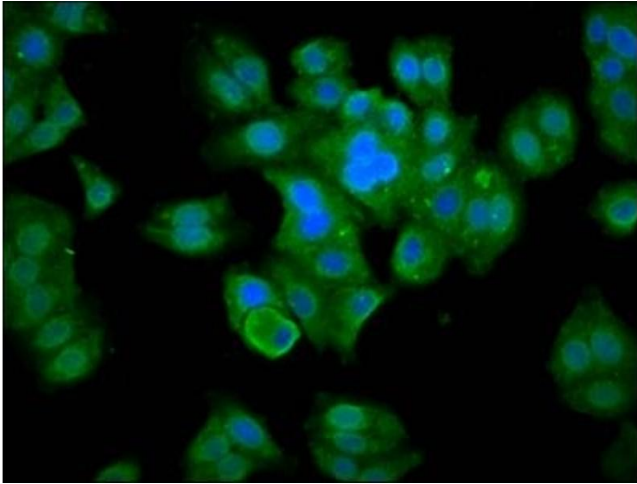
Buffer: Preservative: 0.03 % Proclin 300  
Constituents: 50 % Glycerol, 0.01M PBS, pH 7.4

Preservative: ProClin

Precaution of Use: This product contains ProClin: a POISONOUS AND HAZARDOUS SUBSTANCE which should be handled by trained staff only.

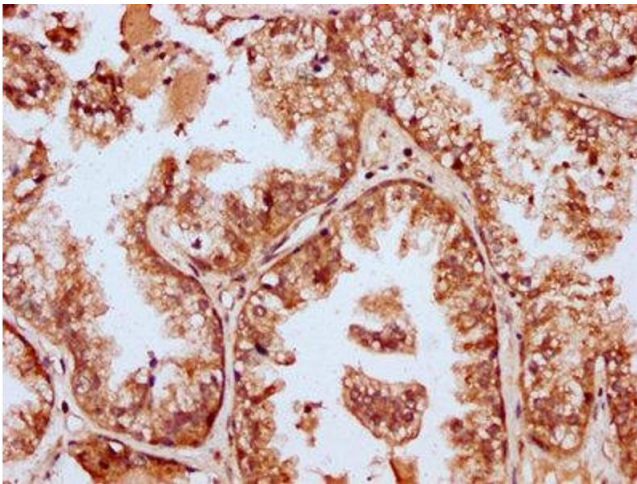
Storage: -20 °C,-80 °C

Storage Comment: Upon receipt, store at -20°C or -80°C. Avoid repeated freeze.



#### Immunofluorescence

**Image 1.** Immunofluorescence staining of HepG2 cells with ABIN7160361 at 1:133, counter-stained with DAPI. The cells were fixed in 4% formaldehyde, permeabilized using 0.2% Triton X-100 and blocked in 10% normal Goat Serum. The cells were then incubated with the antibody overnight at 4°C. The secondary antibody was Alexa Fluor 488-conjugated AffiniPure Goat Anti-Rabbit IgG(H+L).



#### Immunohistochemistry

**Image 2.** IHC image of ABIN7160361 diluted at 1:400 and staining in paraffin-embedded human prostate cancer performed on a Leica Bond™ system. After dewaxing and hydration, antigen retrieval was mediated by high pressure in a citrate buffer (pH 6.0). Section was blocked with 10% normal goat serum 30min at RT. Then primary antibody (1% BSA) was incubated at 4°C overnight. The primary is detected by a biotinylated secondary antibody and visualized using an HRP conjugated SP system.