



[Go to Product page](#)

Datasheet for ABIN7160369
anti-MKLN1 antibody (AA 488-614)

3 Images

Overview

| | |
|----------------------|---|
| Quantity: | 100 µg |
| Target: | MKLN1 |
| Binding Specificity: | AA 488-614 |
| Reactivity: | Human |
| Host: | Rabbit |
| Clonality: | Polyclonal |
| Conjugate: | This MKLN1 antibody is un-conjugated |
| Application: | Western Blotting (WB), ELISA, Immunohistochemistry (IHC), Immunofluorescence (IF) |

Product Details

| | |
|-------------------|---|
| Immunogen: | Recombinant Human Muskelein protein (488-614AA) |
| Isotype: | IgG |
| Cross-Reactivity: | Human, Rat |
| Purification: | >95%, Protein G purified |

Target Details

| | |
|-------------------|--|
| Target: | MKLN1 |
| Alternative Name: | MKLN1 (MKLN1 Products) |
| Background: | Background: Acts as a mediator of cell spreading and cytoskeletal responses to the extracellular matrix component THBS1. |

Target Details

Aliases: MKLN 1 antibody, Mkl1 antibody, MKLN1_HUMAN antibody, muskelin 1, intracellular mediator containing kelch motifs antibody, Muskelin antibody, TWA2 antibody, Two-hybrid-associated protein with Ranbpm 2 antibody

UniProt: [Q9UL63](#)

Application Details

Application Notes: Recommended dilution: WB:1:500-1:5000, IHC:1:200-1:500, IF:1:50-1:200,

Restrictions: For Research Use only

Handling

Format: Liquid

Buffer: Preservative: 0.03 % Proclin 300
Constituents: 50 % Glycerol, 0.01M PBS, pH 7.4

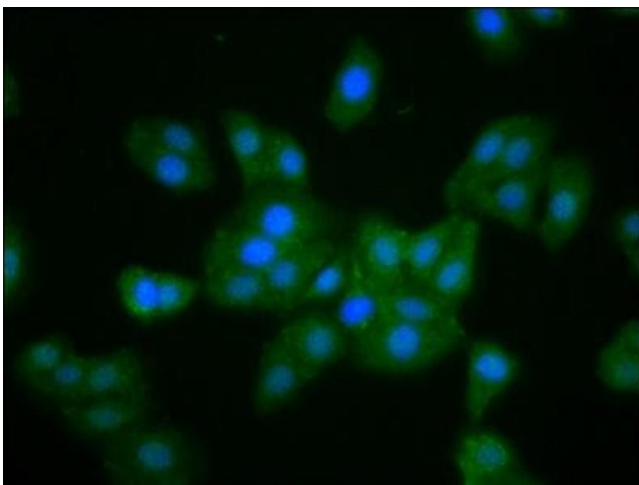
Preservative: ProClin

Precaution of Use: This product contains ProClin: a POISONOUS AND HAZARDOUS SUBSTANCE which should be handled by trained staff only.

Storage: -20 °C,-80 °C

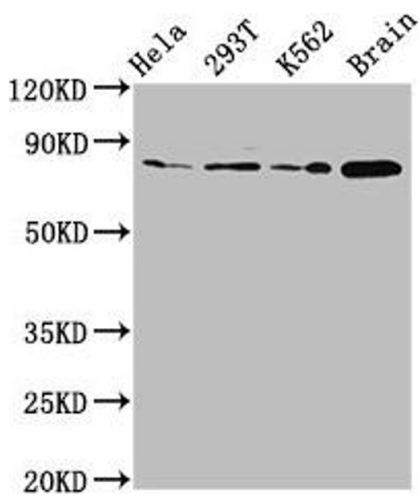
Storage Comment: Upon receipt, store at -20°C or -80°C. Avoid repeated freeze.

Images



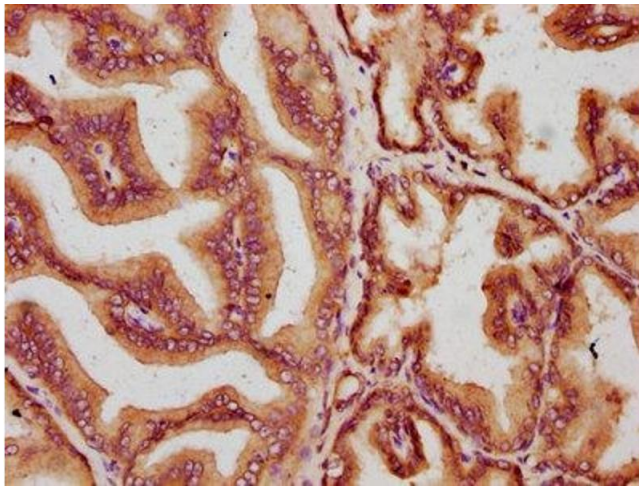
Immunofluorescence

Image 1. Immunofluorescence staining of HepG2 cells with ABIN7160369 at 1:133, counter-stained with DAPI. The cells were fixed in 4% formaldehyde, permeabilized using 0.2% Triton X-100 and blocked in 10% normal Goat Serum. The cells were then incubated with the antibody overnight at 4°C. The secondary antibody was Alexa Fluor 488-conjugated AffiniPure Goat Anti-Rabbit IgG(H+L).



Western Blotting

Image 2. Western Blot Positive WB detected in: HeLa whole cell lysate, 293T whole cell lysate, K562 whole cell lysate, Rat brain tissue All lanes: MKLN1 antibody at 2.7 µg/mL Secondary Goat polyclonal to rabbit IgG at 1/50000 dilution Predicted band size: 85, 61 kDa Observed band size: 85 kDa



Immunohistochemistry

Image 3. IHC image of ABIN7160369 diluted at 1:400 and staining in paraffin-embedded human prostate tissue performed on a Leica Bond™ system. After dewaxing and hydration, antigen retrieval was mediated by high pressure in a citrate buffer (pH 6.0). Section was blocked with 10% normal goat serum 30min at RT. Then primary antibody (1% BSA) was incubated at 4°C overnight. The primary is detected by a biotinylated secondary antibody and visualized using an HRP conjugated SP system.