

Datasheet for ABIN7160405
anti-MYEF2 antibody (AA 372-576)

3 Images

[Go to Product page](#)

Overview

Quantity:	100 µg
Target:	MYEF2
Binding Specificity:	AA 372-576
Reactivity:	Human
Host:	Rabbit
Clonality:	Polyclonal
Conjugate:	This MYEF2 antibody is un-conjugated
Application:	ELISA, Immunohistochemistry (IHC), Immunofluorescence (IF)

Product Details

Immunogen:	Recombinant Human Myelin expression factor 2 protein (372-576AA)
Isotype:	IgG
Cross-Reactivity:	Human
Purification:	>95%, Protein G purified

Target Details

Target:	MYEF2
Alternative Name:	MYEF2 (MYEF2 Products)
Background:	Background: Prevents apoptosis in hepatocellular carcinoma (HCC) cells through interaction with SIAH1, a mediator of apoptosis. May also have a role in cell growth promotion and

Target Details

hepatoma formation. Inhibits the TGF-beta signaling by interacting with the TGF-beta receptor ALK1. When overexpressed, induces the formation of cellular extension, such as filipodia in association with ALK1. Involved at the immediate early stage of adipocyte differentiation By similarity. May bind to the 5\\\'-GCCTGTCTTT-3\\\' DNA sequence of the MB1 domain in the myelin basic protein (MBP) promoter.

Aliases: MYEF2 antibody, KIAA1341 antibody, Myelin expression factor 2 antibody, MEF-2 antibody, MyEF-2 antibody, MST156 antibody

UniProt: [Q9P2K5](#)

Application Details

Application Notes: Recommended dilution: IHC:1:20-1:200, IF:1:50-1:200,

Restrictions: For Research Use only

Handling

Format: Liquid

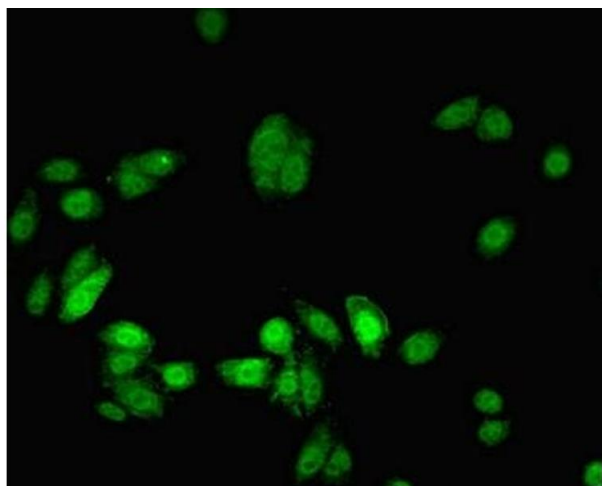
Buffer: Preservative: 0.03 % Proclin 300
Constituents: 50 % Glycerol, 0.01M PBS, PH 7.4

Preservative: ProClin

Precaution of Use: This product contains ProClin: a POISONOUS AND HAZARDOUS SUBSTANCE which should be handled by trained staff only.

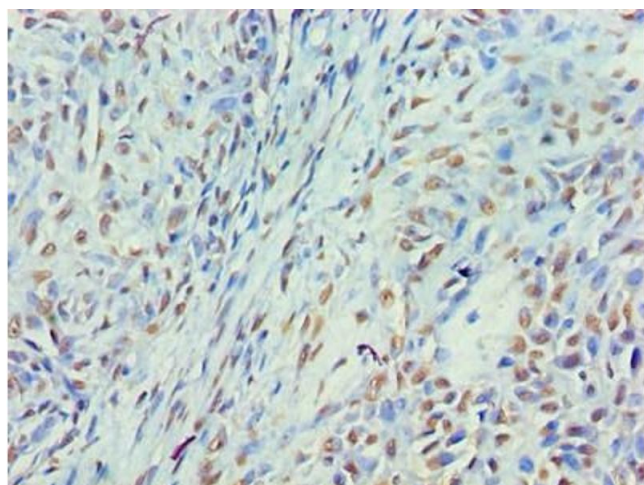
Storage: -20 °C,-80 °C

Storage Comment: Upon receipt, store at -20°C or -80°C. Avoid repeated freeze.



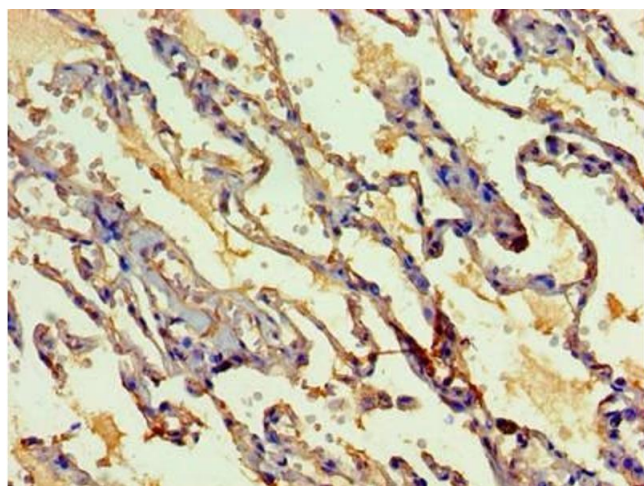
Immunofluorescence

Image 1. Immunofluorescent analysis of HepG2 cells using ABIN7160405 at dilution of 1:100 and Alexa Fluor 488-conjugated AffiniPure Goat Anti-Rabbit IgG(H+L)



Immunohistochemistry

Image 2. Immunohistochemistry of paraffin-embedded human breast cancer using ABIN7160405 at dilution of 1:100



Immunohistochemistry

Image 3. Immunohistochemistry of paraffin-embedded human lung tissue using ABIN7160405 at dilution of 1:100