

Datasheet for ABIN7160445  
**anti-MAG antibody (AA 25-516)**[Go to Product page](#)

## 4 Images

## Overview

Quantity:	100 µg
Target:	MAG
Binding Specificity:	AA 25-516
Reactivity:	Human
Host:	Rabbit
Clonality:	Polyclonal
Conjugate:	This MAG antibody is un-conjugated
Application:	Western Blotting (WB), ELISA, Immunohistochemistry (IHC), Immunofluorescence (IF)

## Product Details

Immunogen:	Recombinant Human Myelin-associated glycoprotein protein (25-516AA)
Isotype:	IgG
Cross-Reactivity:	Human, Mouse, Rat
Purification:	>95%, Protein G purified

## Target Details

Target:	MAG
Alternative Name:	MAG ( <a href="#">MAG Products</a> )
Background:	Background: Adhesion molecule in postnatal neural development that mediates sialic-acid dependent cell-cell interactions between neuronal and myelinating cells. Preferentially binds to

## Target Details

alpha-2,3-linked sialic acid

Aliases: GMA antibody, MAG antibody, MAG\_HUMAN antibody, Myelin associated glycoprotein antibody, Myelin-associated glycoprotein antibody, S MAG antibody, S-MAG antibody, Sialic acid binding Ig like lectin 4A antibody, Sialic acid binding immunoglobulin like lectin 4A antibody, Siglec 4a antibody, Siglec-4a antibody, SIGLEC4A antibody, SPG75 antibody

UniProt: [P20916](#)

Pathways: [Neurotrophin Signaling Pathway](#)

## Application Details

Application Notes: Recommended dilution: WB:1:2000-1:10000, IHC:1:500-1:1000, IF:1:200-1:500,

Restrictions: For Research Use only

## Handling

Format: Liquid

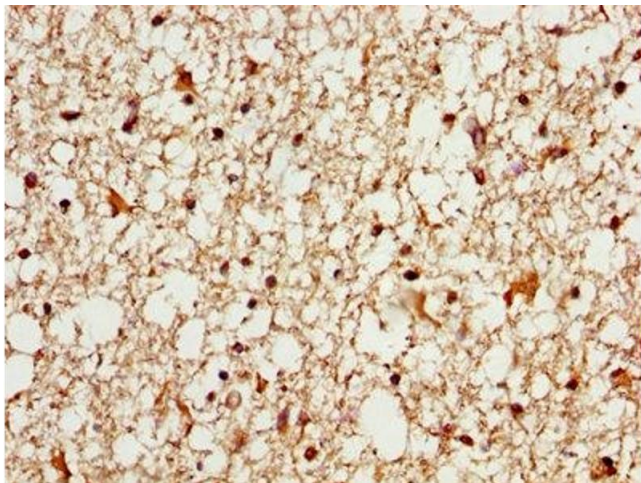
Buffer: Preservative: 0.03 % Proclin 300  
Constituents: 50 % Glycerol, 0.01M PBS, PH 7.4

Preservative: ProClin

Precaution of Use: This product contains ProClin: a POISONOUS AND HAZARDOUS SUBSTANCE which should be handled by trained staff only.

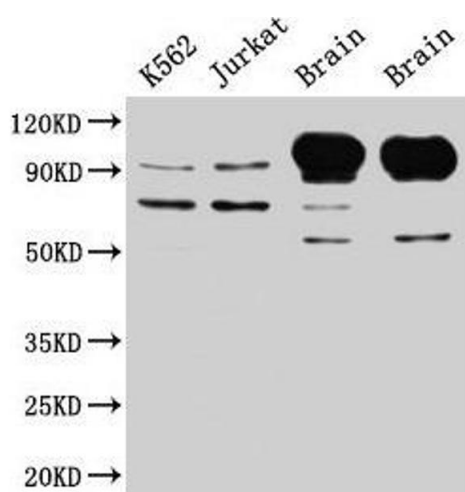
Storage: -20 °C,-80 °C

Storage Comment: Upon receipt, store at -20°C or -80°C. Avoid repeated freeze.



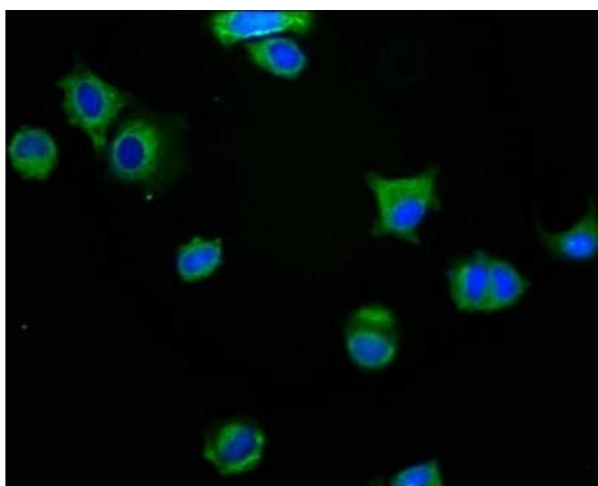
### Immunohistochemistry

**Image 1.** IHC image of ABIN7160445 diluted at 1:600 and staining in paraffin-embedded human brain tissue performed on a Leica Bond™ system. After dewaxing and hydration, antigen retrieval was mediated by high pressure in a citrate buffer (pH 6.0). Section was blocked with 10% normal goat serum 30min at RT. Then primary antibody (1% BSA) was incubated at 4°C overnight. The primary is detected by a biotinylated secondary antibody and visualized using an HRP conjugated SP system.



### Western Blotting

**Image 2.** Western Blot Positive WB detected in: K562 whole cell lysate, Jurkat whole cell lysate, Rat brain tissue, Mouse brain tissue All lanes: MAG antibody at 5 µg/mL Secondary Goat polyclonal to rabbit IgG at 1/50000 dilution Predicted band size: 70, 64, 67 kDa Observed band size: 70, 100 kDa



### Immunofluorescence

**Image 3.** Immunofluorescence staining of MCF-7 cells with ABIN7160445 at 1:200, counter-stained with DAPI. The cells were fixed in 4% formaldehyde, permeabilized using 0.2% Triton X-100 and blocked in 10% normal Goat Serum. The cells were then incubated with the antibody overnight at 4°C. The secondary antibody was Alexa Fluor 488-conjugated AffiniPure Goat Anti-Rabbit IgG(H+L).

Please check the [product details page](#) for more images. Overall 4 images are available for ABIN7160445.